



Reliable

Certified hygienic design (3A/EHEDG) and approved materials according to EC 1935/2004 and FDA

Cost effective

Certified hygienic design of the sensors reduces cleaning time

User friendly

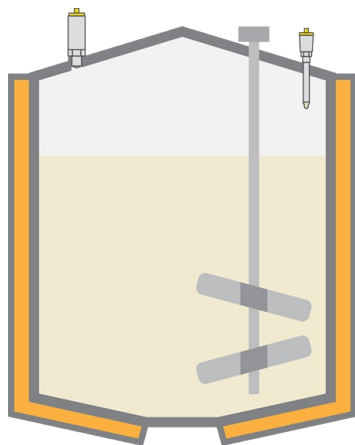
Very simple sensor installation

Batching tank for milk cultures

Level measurement and point level detection in the batching tank

The production of dairy cultures is a process characterised by heat treatment, cooling, inoculation, incubation and storage. Exact timing and temperatures must be maintained throughout all phases of production. In addition, contamination from outside must be avoided. Reliable level measurement and point level detection are important for maintaining an optimal process.

[More details](#)



VEGAPOINT 23

Capacitive level sensor as overflow protection

- Compact design facilitates cleaning
- Reliable detection, independent of the medium
- 360° display of the switching status

[Show Product](#)



VEGAPULS 42

Continuous level measurement with radar

- Exact measurement despite agitators, thanks to strong sensor focusing
- 360° status display for quick and easy recognition of process status
- Compact design allows installation even in very small vessels

[Show Product](#)

BASIC

VEGAPOINT 23

[Show Product](#)**Measuring range - Distance**

-

Process temperature

-40 ... 115 °C

Process pressure

-1 ... 64 bar

Materials, wetted parts316L
PEEK**Threaded connection**

≥ G½, ≥ ½ NPT

Hygienic fittingsClamp ≥ 2", DN50 - DIN32676, ISO2852
Clamp ≥ 1" - DIN32676, ISO2852
Clamp ≥ 1½" - DIN32676, ISO2852
Slotted nut ≥ 1½", ≥ DN40 - DIN 11851
Slotted nut ≥ DN25 - DIN 11851
Slotted nut ≥ DN32 - DIN 11851**Seal material**EPDM
FKM**Protection rating**IP66/IP67
IP69**Output**Transistor (NPN/PNP)
IO-Link**Ambient temperature**

-40 ... 70 °C

BASIC

VEGAPULS 42

[Show Product](#)**Measuring range - Distance**

15 m

Process temperature

-40 ... 130 °C

Process pressure

-1 ... 16 bar

Accuracy

± 2 mm

Frequency

80 GHz

Beam angle

≥ 12°

Materials, wetted partsPTFE
316L
PEEK**Threaded connection**

≥ G¾, ≥ ¾ NPT

Hygienic fittings

Universal connection G1" for hygiene adapter

Seal materialEPDM
FKM