

## Supplementary instructions

### Welded sockets and adapters

VEGAPULS 64, 6X, VEGAFLEX 80 series

VEGABAR series 80

VEGACAP, VEGACAL, VEGAWAVE

VEGASWING, VEGAVIB, VEGAKON



Document ID: 48094



**VEGA**

## Contents

<b>1</b>	<b>Product description</b>	<b>3</b>
<b>2</b>	<b>Welded socket - universal</b>	<b>4</b>
2.1	Threaded fittings	4
2.2	Clamp	7
2.3	Slotted nut acc. to DIN 11851	8
2.4	Slotted nut acc. to DIN 11864-1	10
2.5	Further hygienic fittings	11
<b>3</b>	<b>Welded socket - VEGABAR series 80</b>	<b>14</b>
3.1	Threaded fittings	14
3.2	Extension fitting - Paper industry	17
<b>4</b>	<b>Welded socket - VEGASWING, VEGAVIB, VEGAKON</b>	<b>20</b>
4.1	VEGASWING 61, 63	20
4.2	VEGAVIB 61, 63	21
4.3	VEGAKON 61	22
<b>5</b>	<b>Threaded adapters and flanges - VEGAPULS 64, 6X</b>	<b>24</b>
5.1	Adapter	24
5.2	Flanges according to EN 1092-1	25
5.3	Flanges according to ASME B16.5	26
<b>6</b>	<b>Threaded adapter - VEGAPULS 64, 6X, VEGAFLEX 80 series</b>	<b>27</b>
6.1	Clamp according to DIN 32676, ISO 2852	27
6.2	Slotted nut acc. to DIN 11851	29
6.3	Slotted nut acc. to DIN 11864-1	31
6.4	Further hygienic fittings	34
<b>7</b>	<b>Threaded adapter - VEGABAR 80 series</b>	<b>36</b>
7.1	Clamp according to DIN 32676, ISO 2852	36
7.2	Varivent	37
<b>8</b>	<b>Threaded adapter - VEGACAP, VEGACAL, VEGAWAVE</b>	<b>39</b>
8.1	VEGACAP 63, 64, VEGACAL 63, 64	39
8.2	VEGAWAVE 61, 63	42
<b>9</b>	<b>Welding, mounting</b>	<b>46</b>
9.1	Welding instructions	46
9.2	Mounting instructions threaded and hygienic adapter	47

# 1 Product description

## Welded socket

Welded sockets are used for connection of sensors to the process.

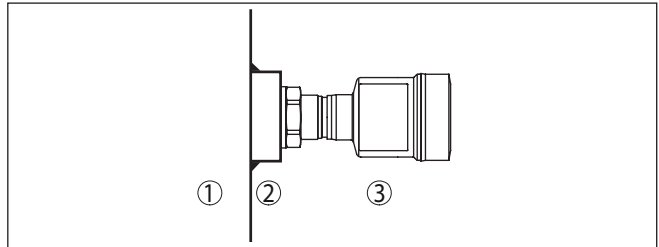


Fig. 1: Function of a welded socket

- 1 Vessel
- 2 Welded socket
- 3 Sensor

## Adapter

Threaded adapters are used to adapt sensors with threaded connection to existing welded sockets.

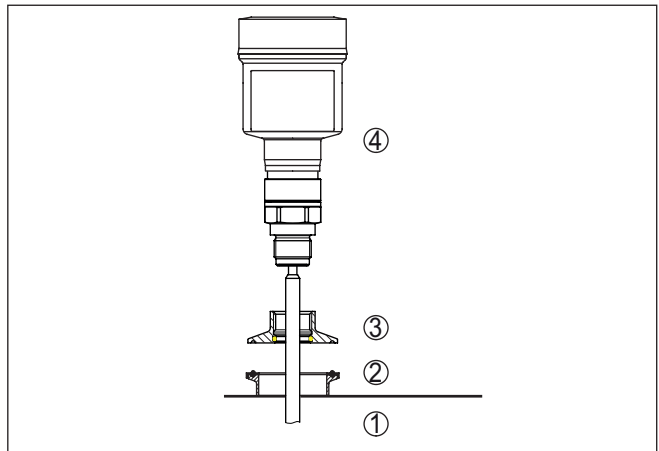


Fig. 2: Function, threaded adapter

- 1 Vessel
- 2 Welded socket
- 3 Adapter
- 4 Sensor

## Process seal

A process seal is required to use the welded sockets or threaded adapters. Depending on the version, the process seal is included as an optional component in the scope of delivery of the welded socket or the sensor.

## Pressure device directive

The welding sockets, threaded and hygienic adapters described here are not subject to the EU Pressure Equipment Directive if they are operated at process pressures  $\leq 200$  bar.

## 2 Welded socket - universal

### 2.1 Threaded fittings

#### Thread G $\frac{1}{2}$

Feature	Characteristic
Size	G $\frac{1}{2}$
Standard	ISO 228-1
Pressure stage	PN 60
Material	316L
Product code/Art. no.	2.36839
Seal	Sensor side

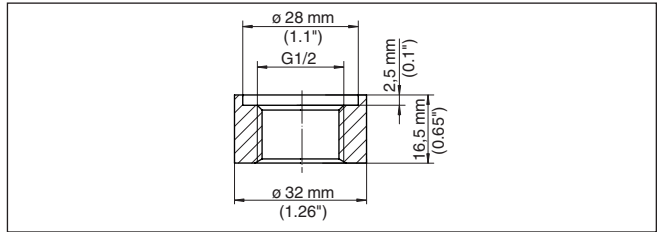


Fig. 3: Dimensions of welded socket, thread G $\frac{1}{2}$  (DIN 3852-X)

#### Thread G $\frac{3}{4}$

Feature	Characteristic
Size	G $\frac{3}{4}$
Standard	DIN 3852-X
Pressure stage	PN 60
Material	316L
Product code/Art. no.	2.36840
Seal	Sensor side

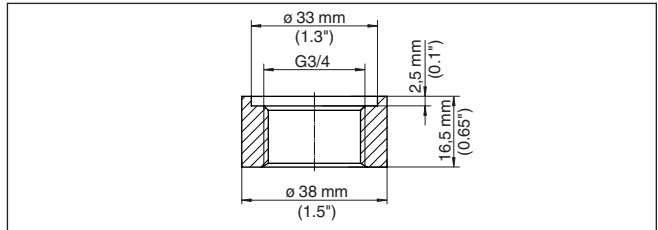


Fig. 4: Dimensions of welded socket, thread G $\frac{3}{4}$  (DIN 3852-X)

#### Thread G1

Feature	Characteristic
Size	G1

Feature	Characteristic
Standard	ISO 228-1
Pressure stage	PN 160
Material	316L
Product code/Art. no.	WDSB80.GLMX1XX
Seal	Sensor side

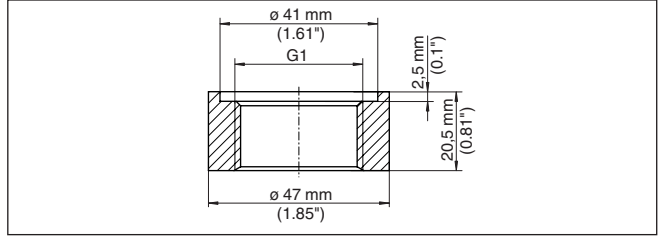


Fig. 5: Dimensions of welded socket, thread G1 (DIN 3852-X)

**Thread G1½**

Feature	Characteristic
Size	G1½
Standard	DIN 3852-X
Pressure stage	PN 60
Material	316L
Product code/Art. no.	2.36842
Seal	Sensor side

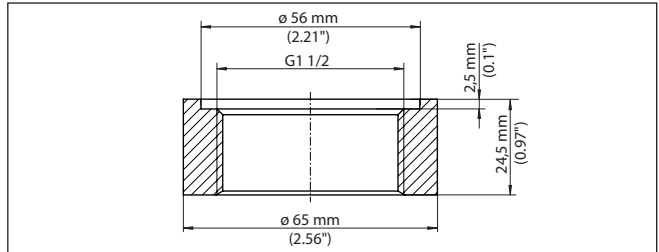


Fig. 6: Dimensions of welded socket, thread G1½ (DIN 3852-X)

**Thread 1½ NPT**

Feature	Characteristic
Size	1½ NPT
Standard	ASME B 1.20.1
Pressure stage	Class 3000 (PN 200)
Material	316L
Product code/Art. no.	WDSB80.C9MX1XX

Feature	Characteristic
Seal	Via thread

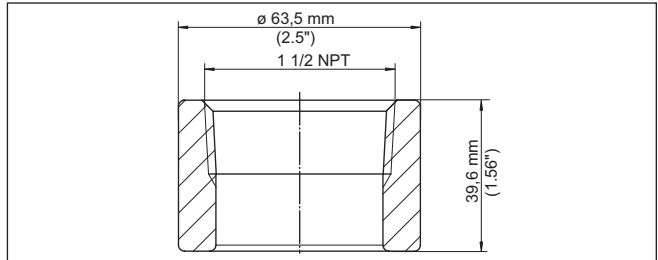


Fig. 7: Dimensions mounting boss thread 1 1/2 NPT (ASME B 1.20.1)

### Thread G3/4 - Hygienic design

Part	Feature	Characteristic
Welded socket	Size	G3/4
	Standard	ISO 228-1
	Material	316L
	Product code/Art. no.	ESMD.A1X
Seal	Material	FKM, EPDM
	Configuration	Seal ring acc. to DIN 3869
	Size	23.47 x 2.62 mm

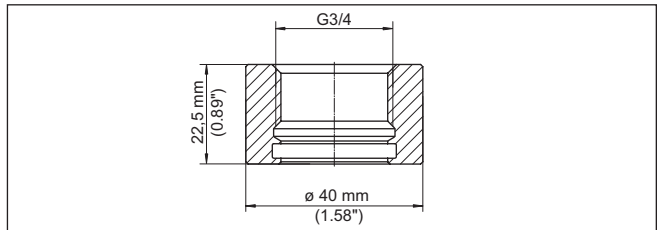


Fig. 8: Dimensions of welded socket, thread G3/4 (ISO 228-1) - Hygienic design

### Thread G1 1/2 - Hygienic design

Part	Feature	Characteristic
Welded socket	Size	G1 1/2
	Standard	ISO 228-1
	Material	316L
	Product code/Art. no.	ESMD.B1X
Seal	Material	FKM, EPDM, FFKM
	Configuration	Seal ring acc. to DIN 3869
	Size	42 x 3 mm

Part	Feature	Characteristic
Welding dummy	Material	Brass
Blind plug	Material	316L

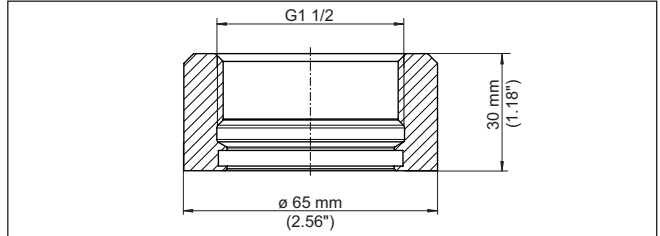


Fig. 9: Dimensions of welded socket, thread G1½ (ISO 228-1) - Hygienic design

## 2.2 Clamp

### Clamp 1½"

Component	Feature	Characteristic
Welded socket	Size	1½"
	Standard	DIN 32676, ISO 2852
	Pressure stage	PN 16
	Material	316L
	Product code/Art. no.	ESTC.B3SX
Tension ring	Pressure stage	PN 16, PN 40
	Material	316L
Seal	Material	EPDM, FKM
	Configuration	Seal ring

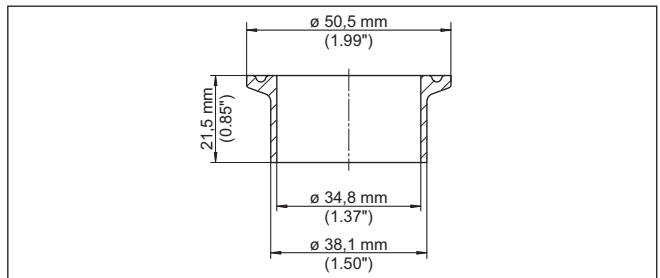


Fig. 10: Dimensions of welded socket, Clamp 1½" (DIN 32676, ISO 2852) PN 16

**Clamp 2"**

Component	Feature	Characteristic
Welded socket	Size	2"
	Standard	DIN 32676, ISO 2852
	Pressure stage	PN 16
	Material	316L
	Product code/Art. no.	ESTC.C3SX
Tension ring	Pressure stage	PN 16, PN 40
	Material	316L
Seal	Material	EPDM, FKM
	Configuration	Seal ring

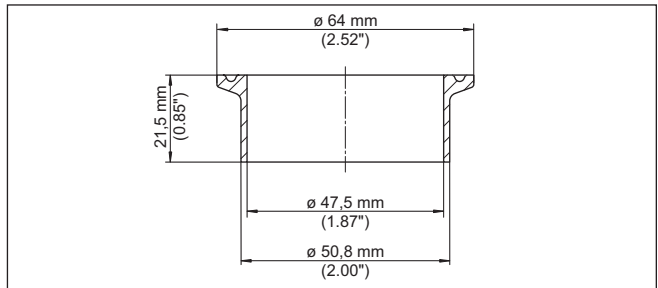


Fig. 11: Dimensions of welded socket, Clamp 2" (DIN 32676, ISO 2852) PN 16

**2.3 Slotted nut acc. to DIN 11851****Slotted nut DN 40**

Component	Feature	Characteristic
Welded socket	Size	DN 40
	Standard	DIN 11851
	Pressure stage	PN 40
	Material	316L
	Product code/Art. no.	ESTR.FA3X
Seal	Material	FKM, EPDM, NBR
	Configuration	Seal ring



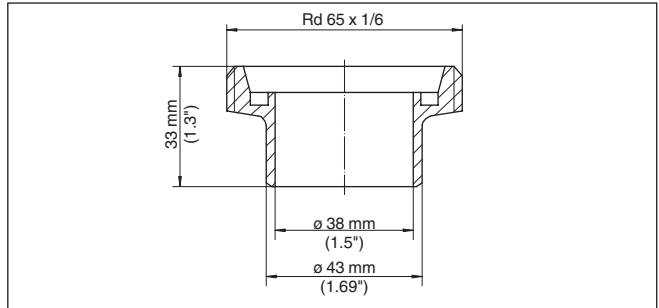


Fig. 12: Dimensions of welded socket, slotted nut DN 40 (DIN 11851)

**Slotted nut DN 50**

Component	Feature	Characteristic
Welded socket	Size	DN 50
	Standard	DIN 11851
	Pressure stage	PN 25
	Material	316L
	Product code/Art. no.	ESTR.GA3X
Seal	Material	FKM, EPDM, NBR
	Configuration	Seal ring

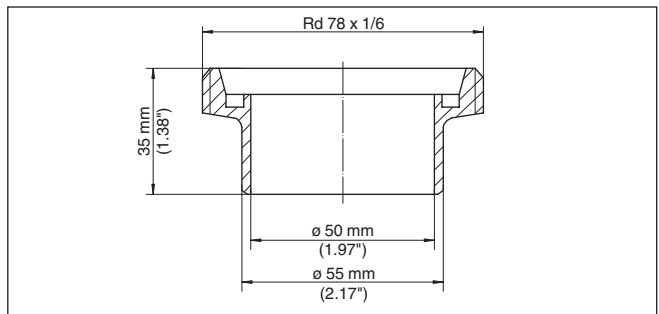


Fig. 13: Dimensions of welded socket, slotted nut DN 50 (DIN 11851)

## 2.4 Slotted nut acc. to DIN 11864-1

### Slotted nut DN 40

Component	Feature	Characteristic
Welded socket	Size	DN 40
	Standard	DIN 11864-1
	Pressure stage	PN 25
	Material	316L
	Product code/Art. no.	ESTR.FBXX
Seal	From the user side	

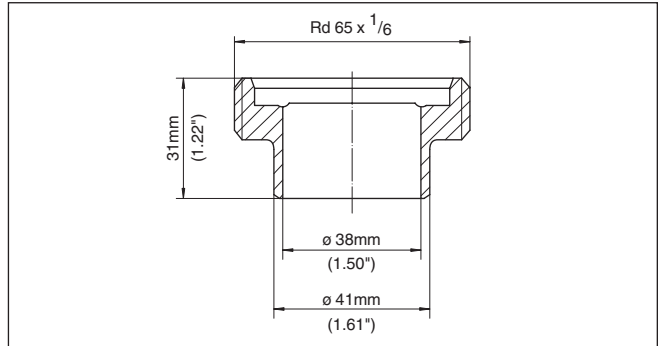


Fig. 14: Dimensions of welded socket, slotted nut DN 40 (DIN 11864-1)

### Slotted nut DN 50

Component	Feature	Characteristic
Welded socket	Size	DN 50
	Standard	DIN 11864-1
	Pressure stage	PN 16
	Material	316L
	Product code/Art. no.	ESTR.GBXX
Seal	From the user side	

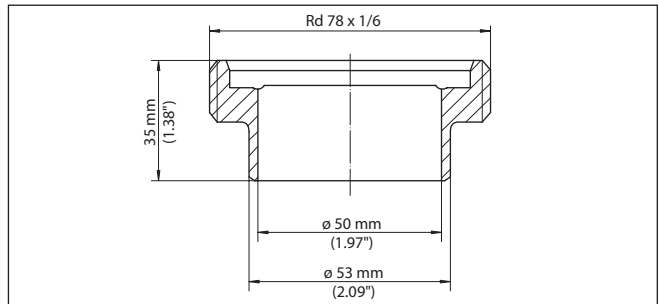


Fig. 15: Dimensions of welded socket, slotted nut DN 50 (DIN 11864-1)

## 2.5 Further hygienic fittings

### Hygienic connection F40 with compression nut

Component	Feature	Characteristic
Welded socket	Size	Rd 65 x 1/6
	Standard	-
	Pressure stage	PN 25
	Material	316L
	Product code/Art. no.	ESTA.LA3XXX
Seal	Material	EPDM
	Configuration	O-ring
	Size	40 x 5 mm
Welding dummy	Material	Brass
Blind plug	Material	316L

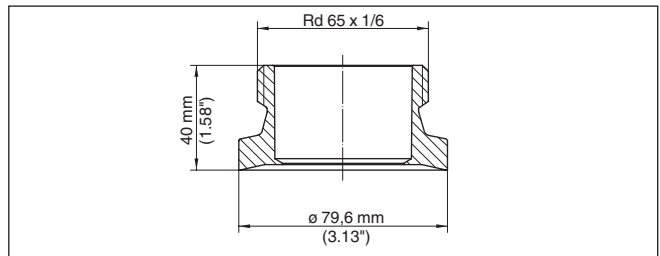


Fig. 16: Dimensions of welded socket, hygienic fitting F40 with compression nut

### Hygienic fitting DN 32 with tension flange

Component	Feature	Characteristic
Welded socket	Size	ø 90
	Standard	-
	Pressure stage	PN 25
	Material	316L
	Product code/Art. no.	ESTA.LBXXX
Seal	Material	EPDM
	Configuration	O-ring
	Size	40 x 5 mm
Welding dummy	Material	Brass
Blind plug	Material	316L

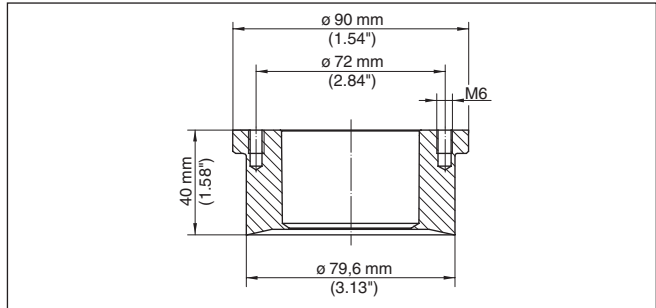


Fig. 17: Dimensions of welded socket, hygienic fitting DN 32 with tension flange

**DRD connection**

Component	Feature	Characteristic
Welded socket	Size	ø 105
	Standard	-
	Pressure stage	PN 40
	Material	316L
	Product code/Art. no.	ESTD.AAXX
Seal	Material	PTFE
	Configuration	Flat seal
	Size	50 x 66 x 1 mm

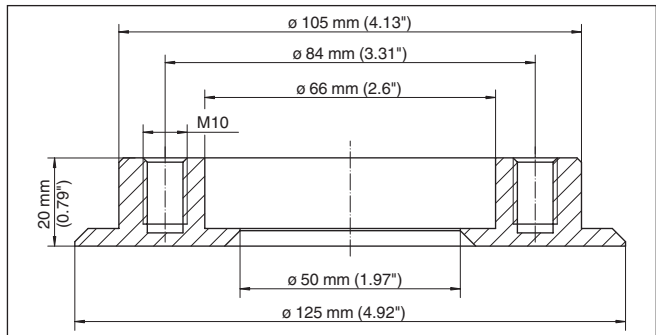


Fig. 18: Dimensions of welded socket, DRD

**Cone connection DN 25/  
Rd52 x 2**

Component	Feature	Characteristic
Welded socket	Size	DN 25

Component	Feature	Characteristic
	Standard	-
	Pressure stage	-
	Material	316Ti
	Product code/Art. no.	ESTK.KAXX
Seal	Material	EPDM
	Configuration	O-ring
	Size	30 x 3 mm

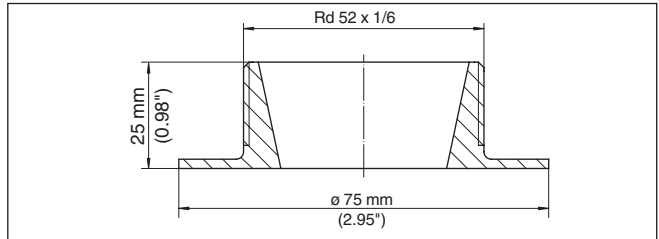


Fig. 19: Dimensions of welded socket, conus connection DN 25

### 3 Welded socket - VEGABAR series 80

#### 3.1 Threaded fittings

##### Thread G $\frac{1}{2}$ - manometer connection

Part	Feature	Characteristic
Welded socket	Size	G $\frac{1}{2}$
	Standard	EN 837
	Material	316L
	Product code/Art. no.	WDSB80.DUMXXX
Seal	Material	Klingsil C-4400
	Configuration	Flat seal
	Size	21 x 30 x 2 mm
Welding dummy	Material	Brass
Blind plug	Material	316L

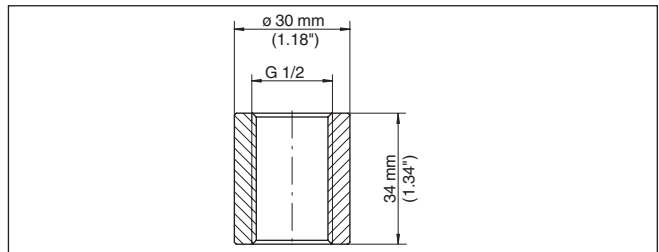


Fig. 20: Dimensions of welded socket, thread G $\frac{1}{2}$  (EN 837) - manometer connection - VEGABAR 81, 82, 83

##### Thread G $\frac{1}{2}$ - front-flush

Part	Feature	Characteristic
Welded socket	Size	G $\frac{1}{2}$
	Standard	ISO 228-1
	Material	316L
	Product code/Art. no.	WDSB80.C3MXXX
Seal	Material	FKM
	Configuration	Seal ring acc. to DIN 3869
	Size	18.5 x 23.9 x 1.5 mm
Welding dummy	Material	Brass
Blind plug	Material	316L

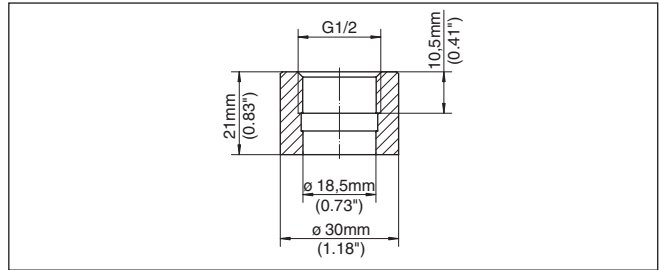


Fig. 21: Dimensions welded socket G $\frac{1}{2}$  (ISO 228-1), front-flush - VEGABAR 82

**Thread G $\frac{3}{4}$**

Part	Feature	Characteristic
Welded socket	Size	G $\frac{3}{4}$
	Standard	DIN 3852-E
	Material	316L
	Product code/Art. no.	WDSB80.N9MXXX
Seal	Material	FKM, EPDM, FFKM, Klingsil C-4400
	Configuration	Seal ring acc. to DIN 3869
	Size	23.47 x 2.62 mm
Welding dummy	Material	Brass
Blind plug	Material	316L

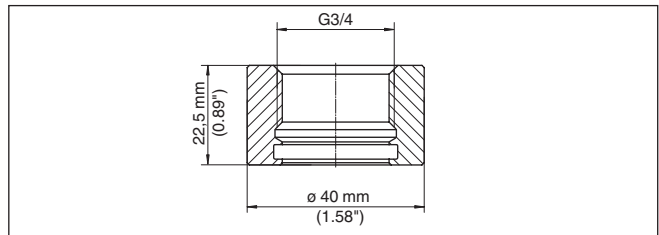


Fig. 22: Dimensions of welded socket, G $\frac{3}{4}$  (DIN 3852-X) - VEGABAR 82

**Thread G1**

Part	Feature	Characteristic
Welded socket	Size	G1
	Standard	ISO 228-1
	Material	316L
	Product code/Art. no.	WDSB80.C5MXXX
Seal	Material	Klingsil C-4400
	Configuration	Flat seal
	Size	33 x 39 x 2 mm

Part	Feature	Characteristic
Welding dummy	Material	Brass
Blind plug	Material	316L

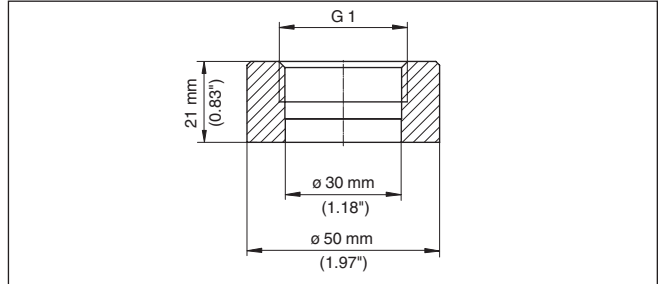


Fig. 23: Dimensions of welded socket, G1 (ISO 228-1) - VEGABAR 82, 83

**Thread G1½**

Part	Feature	Characteristic
Welded socket	Size	G1½
	Standard	DIN 3852-A
	Material	316L
	Product code/Art. no.	WDSB80.DAMXXX
Seal	Material	Klingsil C-4400
	Configuration	Flat seal
	Size	48 x 55 x 2 mm
Welding dummy	Material	Brass
Blind plug	Material	316L

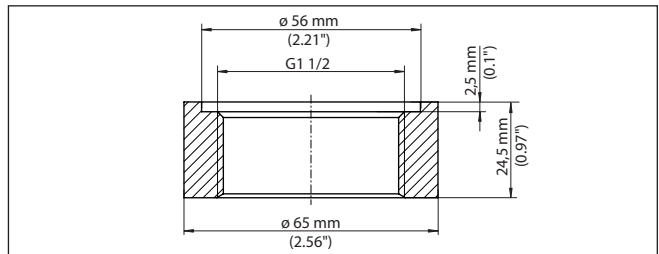


Fig. 24: Dimensions of welded socket, thread G1½ (EN 837) - VEGABAR 82, 83, 86, 87



### 3.2 Extension fitting - Paper industry

M30 x 1.5

Part	Feature	Characteristic
Welded socket	Size	M30 x 1.5
	Standard	DIN 13
	Material	316L
	Product code/Art. no.	WDSB80.ALMXXX (completely front-flush) WDSB80.APMXXX (for headbox)
Seal	Material	FKM, EPDM, FFKM
	Configuration	Seal ring
	Size	20.35 x 1.78 mm
Welding dummy	Material	Brass
Blind plug	Material	316L

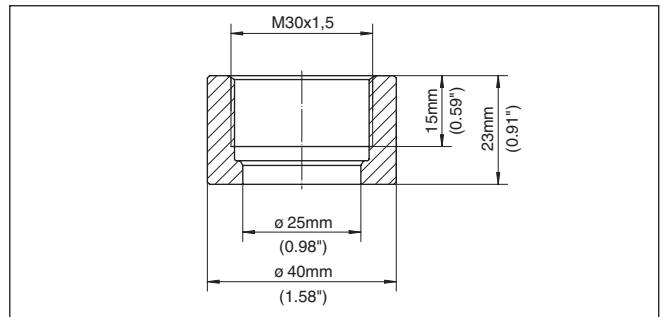


Fig. 25: Dimensions of welded socket, M30 x 1.5 - VEGABAR 82

M44 x 1.25

Part	Feature	Characteristic
Welded socket	Size	M44 x 1.25
	Standard	DIN 13
	Material, process fitting	316L, Alloy C22
	Material, pressure screw	Aluminium, 316L
	Product code/Art. no.	WDSB80.AFMXXX
Seal	Material	FKM, EPDM, FFKM
	Configuration	Seal ring
	Size	40 x 2 mm
Welding dummy	Material	Brass
Blind plug	Material	316L

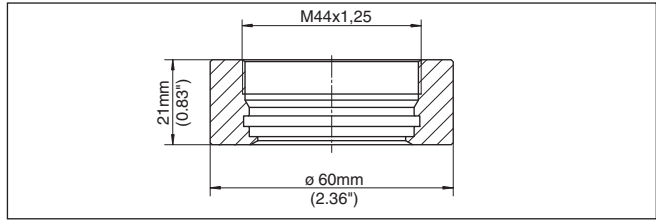


Fig. 26: Dimensions of welded socket, M44 x 1.25 - VEGABAR 82, 83

**G1 suitable for PASVE****Data - Version with metallic seal:**

Part	Feature	Characteristic
Welded socket	Size	G1
	Standard	ISO 228-1
	Material	316L
	Product code/Art. no.	WDSB80.F9MXXX
Welding dummy	Material	Brass
Blind plug	Material	316L

**Additional data - Version with O-ring seal:**

Part	Feature	Characteristic
Seal	Material	FKM, EPDM, FFKM
	Configuration	Seal ring
	Size	18.77 x 1.78 mm

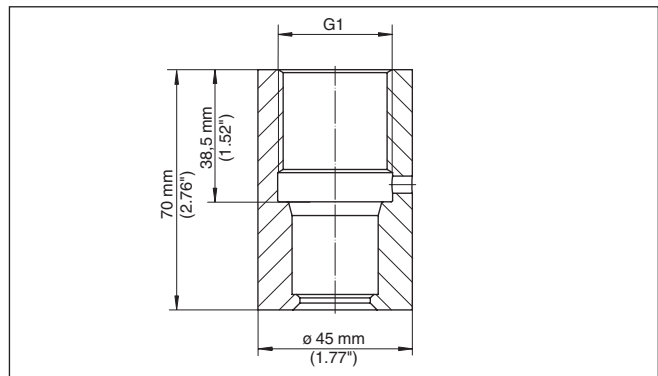


Fig. 27: Dimensions welded socket G1 suitable for PASVE (for the two previously listed versions) - VEGABAR 82

**PMC 1"**

Part	Feature	Characteristic
Welded socket	Size	1"
	Standard	-
	Material	316L
	Product code/Art. no.	WDSB80.EWMXXX
Seal	Material	FKM, EPDM, FFKM, PTFE
	Size	ø 20,22 x 3,53 mm
Welding dummy	Material	Brass

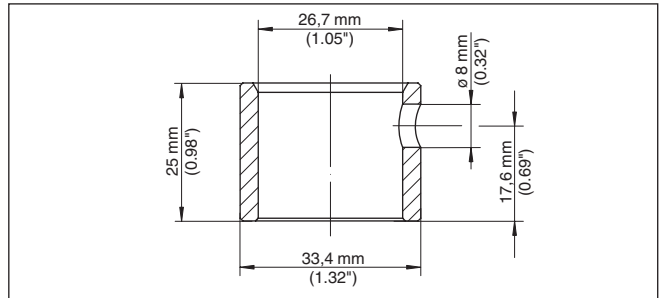


Fig. 28: Dimensions of welded socket, PMC 1" VEGABAR 82

## 4 Welded socket - VEGASWING, VEGAVIB, VEGAKON

### 4.1 VEGASWING 61, 63

#### Thread G $\frac{3}{4}$

Part	Feature	Characteristic
Welded socket	Size	G $\frac{3}{4}$
	Standard	DIN 3852-X
	Pressure stage	PN 60
	Material	316L
	Product code/Art. no.	ESTSG.1GBXX
Seal	Material	FKM, EPDM, FFKM
	Configuration	O-ring
	Size	21 x 3 mm

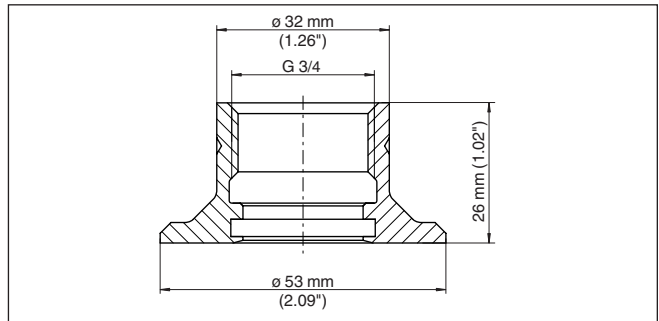


Fig. 29: Dimensions of welded socket, G $\frac{3}{4}$  (DIN 3852-X)

#### Thread G1

Part	Feature	Characteristic
Welded socket	Size	G1
	Standard	DIN 3852-X
	Pressure stage	PN 60
	Material	316L
	Product code/Art. no.	ESTSG.1GAXX
Seal	Material	FKM, EPDM
	Configuration	O-ring
	Size	21 x 3 mm

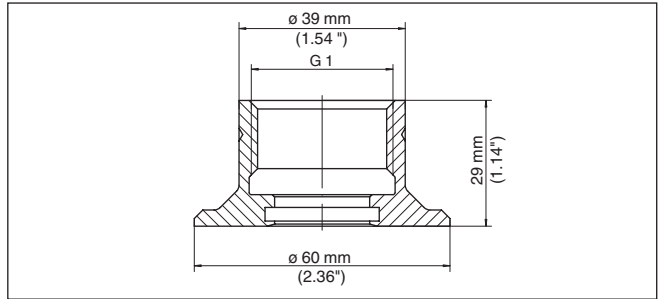


Fig. 30: Dimensions of welded socket, G1 (DIN 3852-X)

## 4.2 VEGAIB 61, 63

### Thread G1

Part	Feature	Characteristic
Welded socket	Size	G1
	Standard	DIN 3852-A
	Pressure stage	PN 16
	Material	316L
	Product code/Art. no.	ESTVB.GCRXX
Seal	Material	EPDM 70 Shore A, FDA approved
	Configuration	O-ring
	Size	28 x 3.5 mm

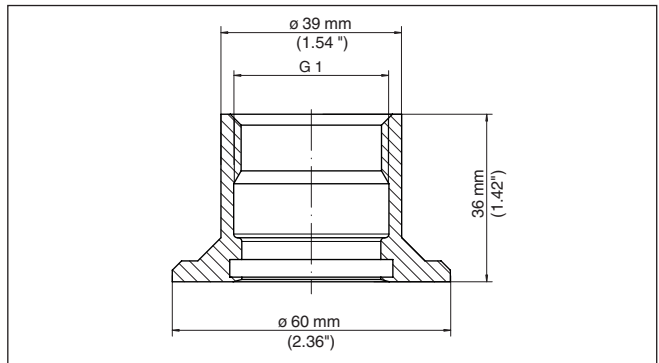


Fig. 31: Dimensions of welded socket, G1 (DIN 3852-A)

**Thread G1½**

Part	Feature	Characteristic
Welded socket	Size	G1½
	Standard	DIN 3852-A
	Pressure stage	PN 16
	Material	316L
	Product code/Art. no.	ESTVB.GDUXX
Seal	Material	EPDM 70 Shore A, FDA approved
	Configuration	O-ring
	Size	28 x 3.5 mm

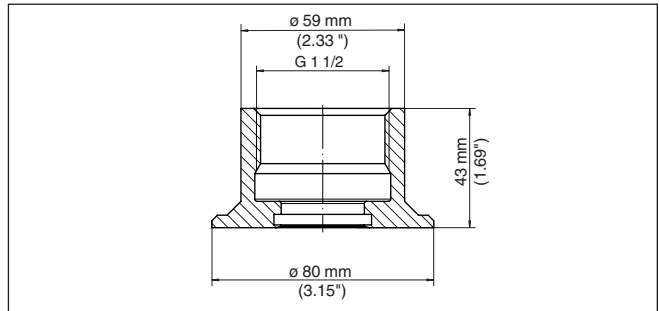


Fig. 32: Dimensions of welded socket, G1½ (DIN 3852-A)

**4.3 VEGAKON 61****Thread G1**

Feature	Characteristic
Size	G1
Standard	DIN 3852-X
Pressure stage	PN 25
Material	316Ti
Product code/Art. no.	ESTKN.1GA
Seal	Klingersil C-4400 33 x 39 x 2 mm

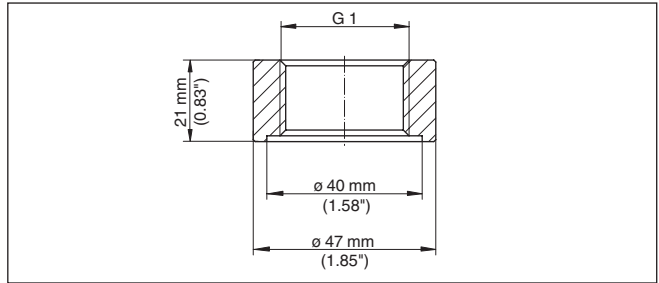


Fig. 33: Dimensions of welded socket, G1 (DIN 3852-X)

**Thread G1 - suitable for foodstuffs**

Feature	Characteristic
Size	G1
Standard	DIN 3852-X
Pressure stage	PN 25
Material	316Ti
Product code/Art. no.	ESTKN.1GL
Seal	EPDM 70 Shore A, FDA approved 28 x 3.5 mm

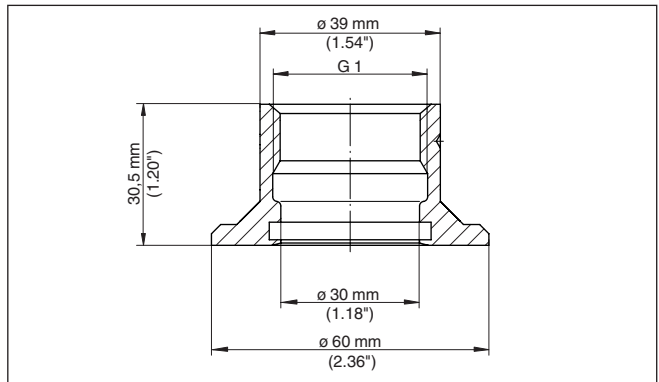


Fig. 34: Dimensions of welded socket, G1 (DIN 3852-X) - suitable for foodstuffs

## 5 Threaded adapters and flanges - VEGAPULS 64, 6X

### 5.1 Adapter

Thread G1½ on thread G1½

Part	Feature	Characteristic
Adapter	Size, sensor side	G1½
	Size, process side	G1½
	Standard	DIN 3852-X
	Material	PTFE
	Pressure stage	unpressurized 0.2 bar
	Process temperature	-40 ... +130 °C (-40 ... +266 °F)
	Max. torque	5 Nm (3.688 lbf ft)
	Product code/Art. no.	GEWADA-F.TC4T1
Seal, sensor side	Material	FKM
	Configuration	O-ring seal
	Size	48 x 2 mm
Seal, process side	Material	FKM
	Configuration	Flat seal
	Size	ø 58 x 47 x 2 mm

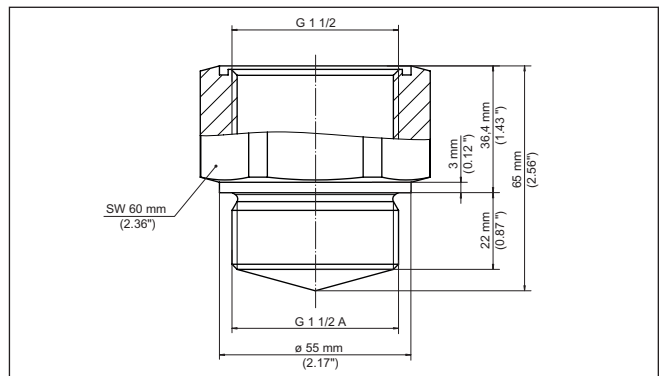


Fig. 35: Dimensions of threaded adapter G1½ (DIN 3852-X) on thread G1½, G2 (DIN 3852-X)



**Thread G1½ on thread G2**

Part	Feature	Characteristic
Adapter	Size, sensor side	G1½
	Size, process side	G2
	Standard	DIN 3852-X
	Material	PTFE
	Pressure stage	unpressurized 0.2 bar
	Process temperature	-40 ... +130 °C (-40 ... +266 °F)
	Max. torque	5 Nm (3.688 lbf ft)
	Product code/Art. no.	GEWADA-F.TC4T3
Seal, sensor side	Material	FKM
	Configuration	O-ring seal
	Size	48 x 2 mm
Seal, process side	Material	FKM
	Configuration	Flat seal
	Size	ø 68 x 59 x 2.5 mm

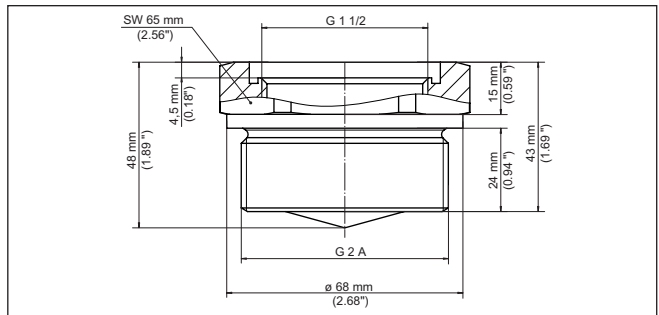


Fig. 36: Dimensions of threaded adapter G1½ (DIN 3852-X) on thread G2 (DIN 3852-X)

**5.2 Flanges according to EN 1092-1**

**Thread G1½ - Flange  
DN 40 - Form B1**

Part	Feature	Characteristic
Adapter	Size, sensor side	G1½
	Standard	DIN 3852-X
	Size, process side	DN 40
	Standard	EN 1092-1, Form B1
	Pressure stage	PN 40
	Material	316L
	Product code/Art. no.	GEWADA-F.TC1AC

Part	Feature	Characteristic
Seal	Material	FKM, EPDM, FFKM
	Configuration	Seal ring
	Size	42 x 3 mm

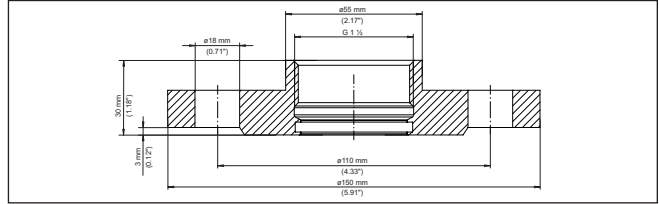


Fig. 37: Dimensions of threaded adapter G1½ (DIN 3852-X) on flange DN 40 (EN 1092-1, Form B1) PN 40

### 5.3 Flanges according to ASME B16.5

#### Thread G1½ - Flange 1½" - RF

Part	Feature	Characteristic
Adapter	Size, sensor side	G1½
	Standard	DIN 3852-X
	Size, process side	1½"
	Standard	ASME B16.5, RF
	Pressure stage	150 lb
	Material	316L
	Product code/Art. no.	GEWADA-F.TC1AH
Seal	Material	FKM, EPDM, FFKM
	Configuration	Seal ring
	Size	42 x 3 mm

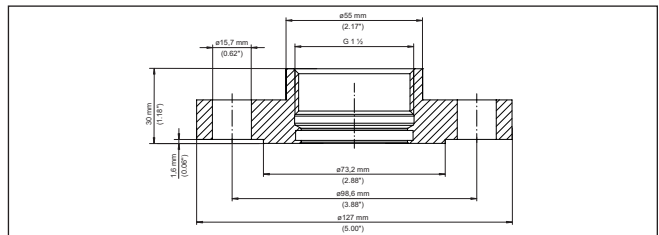


Fig. 38: Dimensions of threaded adapter G1½ (DIN 3852-X) on flange 1½" (ASME B16.5, RF) 150 lb

## 6 Threaded adapter - VEGAPULS 64, 6X, VEGAFLEX 80 series

### 6.1 Clamp according to DIN 32676, ISO 2852

Thread G $\frac{3}{4}$  - Clamp 1 $\frac{1}{2}$ "

Part	Feature	Characteristic
Adapter	Size, sensor side	G $\frac{3}{4}$
	Standard	DIN 3852-X
	Size, process side	Clamp 1 $\frac{1}{2}$ "
	Standard	DIN 32676, ISO 2852
	Pressure stage	PN 16
	Material	316L
	Product code/Art. no.	GEWADA-A.CG3
Seal	Material	FKM, EPDM, FFKM
	Configuration	O-ring seal
	Size	23.47 x 2.62 mm

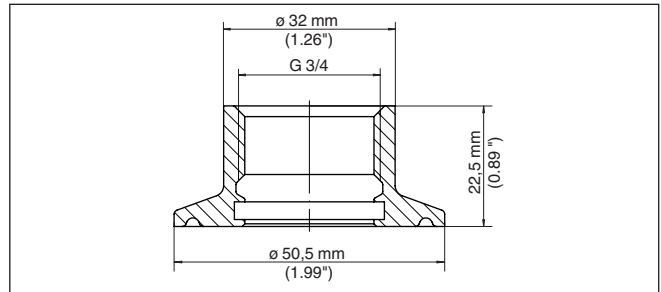


Fig. 39: Dimensions of threaded adapter G $\frac{3}{4}$  (DIN 3852-X) on Clamp 1 $\frac{1}{2}$ " (DIN 32676, ISO 2852) PN 16

Thread G $\frac{3}{4}$  - Clamp 2"

Data:

Part	Feature	Characteristic
Adapter	Size, sensor side	G $\frac{3}{4}$
	Standard	DIN 3852-X
	Size, process side	Clamp 2"
	Standard	DIN 32676, ISO 2852
	Pressure stage	PN 16
	Material	316L
	Product code/Art. no.	GEWADA-A.CA3
Seal	Material	FKM, EPDM, FFKM
	Configuration	O-ring seal
	Size	23.47 x 2.62 mm

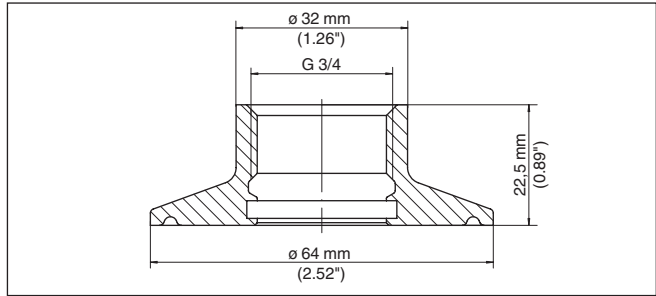


Fig. 40: Dimensions of threaded adapter G $\frac{3}{4}$  (DIN 3852-X) on Clamp 2" (DIN 32676, ISO 2852) PN 16

### Thread G1 $\frac{1}{2}$ - Clamp 2"

#### Data:

Part	Feature	Characteristic
Adapter	Size, sensor side	G1 $\frac{1}{2}$
	Standard	DIN 3852-X
	Size, process side	Clamp 2"
	Standard	DIN 32676, ISO 2852
	Pressure stage	PN 16
	Material	316L
	Product code/Art. no.	GEWADA-B.CA3
Seal	Material	FKM Vi 780 FDA, EPDM FDA
	Configuration	O-ring seal
	Size	42 x 3 mm

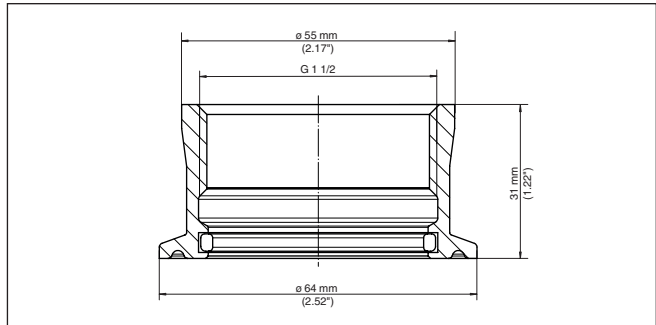


Fig. 41: Dimensions of threaded adapter G1 $\frac{1}{2}$  (DIN 3852-X) on Clamp 2" (DIN 32676, ISO 2852) PN 16

## 6.2 Slotted nut acc. to DIN 11851

### Thread G $\frac{3}{4}$ - Slotted nut DN 40

Part	Feature	Characteristic
Adapter	Size, sensor side	G $\frac{3}{4}$
	Standard	DIN 3852-X
	Size, process side	DN 40
	Standard	DIN 11851
	Pressure stage	PN 16
	Material	316L
	Product code/Art. no.	GEWADA-A.RA3
Seal	Material	FKM, EPDM, FFKM
	Configuration	O-ring seal
	Size	23.47 x 2.62 mm

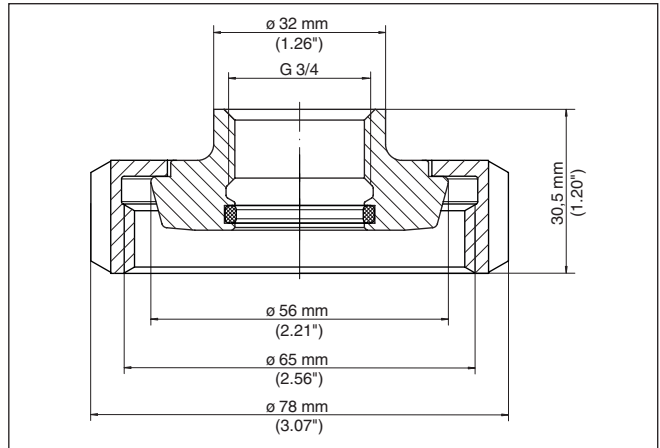


Fig. 42: Dimensions of threaded adapter G $\frac{3}{4}$  (DIN 3852-X) on slotted nut DN 40 (DIN 11851) PN 16

### Thread G $\frac{3}{4}$ - Slotted nut DN 50

Part	Feature	Characteristic
Adapter	Size, sensor side	G $\frac{3}{4}$
	Standard	DIN 3852-X
	Size, process side	DN 50
	Standard	DIN 11851
	Pressure stage	PN 16
	Material	316L
	Product code/Art. no.	GEWADA-A.RB3

Part	Feature	Characteristic
Seal	Material	FKM, EPDM, FFKM
	Configuration	O-ring seal
	Size	23.47 x 2.62 mm

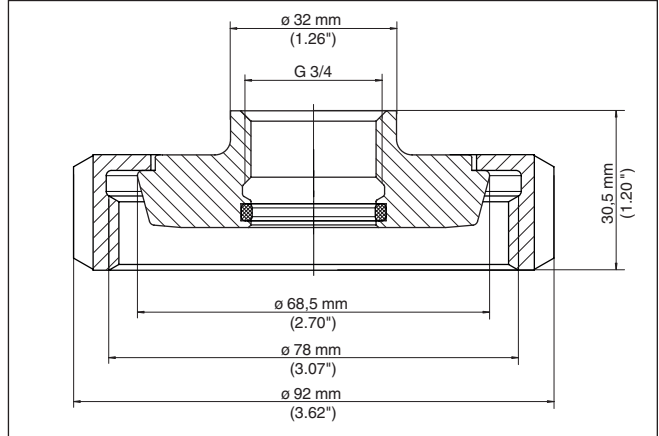


Fig. 43: Dimensions of threaded adapter G $\frac{3}{4}$  (DIN 3852-X) on slotted nut DN 50 (DIN 11851) PN 16

### Thread G1 $\frac{1}{2}$ - Slotted nut DN 50

Part	Feature	Characteristic
Adapter	Size, sensor side	G1 $\frac{1}{2}$
	Standard	DIN 3852-X
	Size, process side	DN 40
	Standard	DIN 11851
	Pressure stage	PN 16
	Material	316L
	Product code/Art. no.	GEWADA-B.RB3
Seal	Material	FKM Vi 780 FDA, EPDM FDA
	Configuration	O-ring seal
	Size	42 x 3 mm

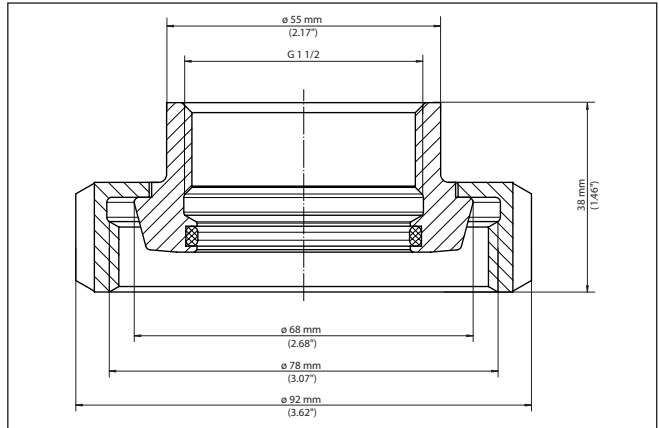


Fig. 44: Dimensions of threaded adapter G1½ (DIN 3852-X) on slotted nut DN 50 (DIN 11851) PN 16

### 6.3 Slotted nut acc. to DIN 11864-1

#### Thread G¾ - Slotted nut DN 40

Part	Feature	Characteristic
Adapter	Size, sensor side	G¾
	Standard	DIN 3852-X
	Size, process side	DN 40
	Standard	DIN 11864-1
	Pressure stage	PN 16
	Material	316L
	Product code/Art. no.	GEWADA-A.RE3
Seal	Material	FKM, EPDM, FFKM
	Configuration	O-ring seal
	Size	23.47 x 2.62 mm

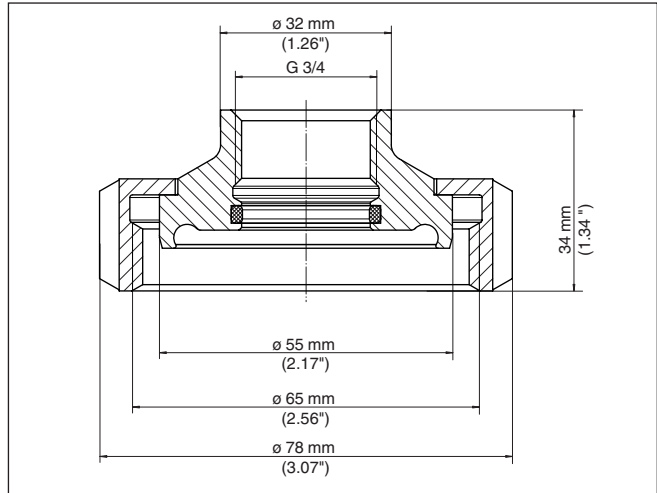


Fig. 45: Dimensions of threaded adapter G $\frac{3}{4}$  (DIN 3852-X) on slotted nut DN 40 (DIN 11864-1) PN 16

### Thread G $\frac{3}{4}$ - Slotted nut DN 50

Part	Feature	Characteristic
Adapter	Size, sensor side	G $\frac{3}{4}$
	Standard	DIN 3852-X
	Size, process side	DN 40
	Standard	DIN 11864-1
	Pressure stage	PN 16
	Material	316L
	Product code/Art. no.	GEWADA-A.RF3
Seal	Material	FKM, EPDM, FFKM
	Configuration	O-ring seal
	Size	23.47 x 2.62 mm



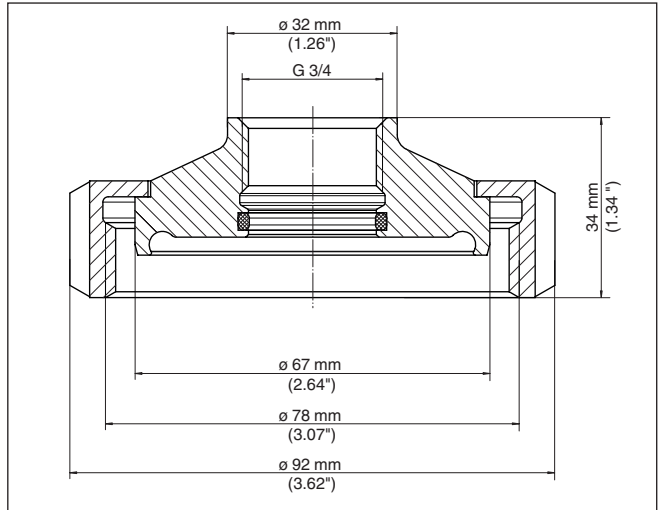


Fig. 46: Dimensions of threaded adapter G $\frac{3}{4}$  (DIN 3852-X) on slotted nut DN 50 (DIN 11864-1) PN 16

**Thread G $\frac{1}{2}$  - Slotted nut  
DN 50**

Part	Feature	Characteristic
Adapter	Size, sensor side	G $\frac{1}{2}$
	Standard	DIN 3852-X
	Size, process side	DN 40
	Standard	DIN 11864-1
	Pressure stage	PN 16
	Material	316L
	Product code/Art. no.	GEWADA-B.RF3
Seal	Material	FKM Vi 780 FDA, EPDM FDA
	Configuration	O-ring seal
	Size	42 x 3 mm

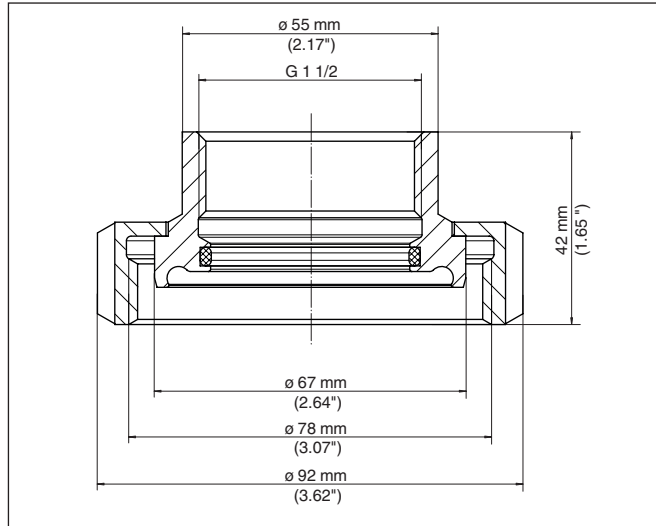


Fig. 47: Dimensions of threaded adapter G1½ (DIN 3852-X) on slotted nut DN 50 (DIN 11864-1) PN 16

## 6.4 Further hygienic fittings

### Thread G¾ - DRD connection

Part	Feature	Characteristic
Adapter	Size, sensor side	G¾
	Standard	DIN 3852-X
	Size, process side	-
	Standard	DRD
	Pressure stage	PN 16
	Material	316L
	Product code/Art. no.	GEWADA-A.AA3
Seal	Material	FKM, EPDM, FFKM
	Configuration	O-ring seal
	Size	23.47 x 2.62 mm

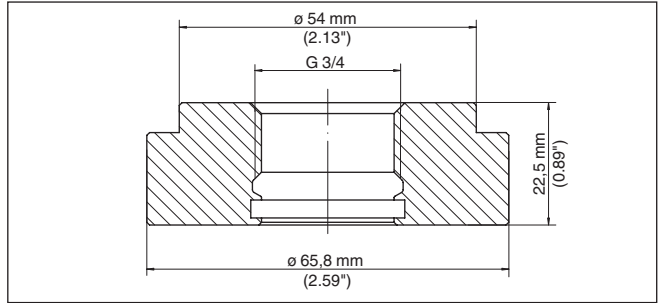


Fig. 48: Dimensions adapter G $\frac{3}{4}$  (DIN 3852-X) on DRD

**Thread G $\frac{3}{4}$  - Varivent  
DN 32**

Part	Feature	Characteristic
Adapter	Size, sensor side	G $\frac{3}{4}$
	Standard	DIN 3852-X
	Size, process side	DN 32
	Standard	Tuchenhagen
	Pressure stage	PN 16
	Material	316L
	Product code/Art. no.	GEWADA-A.TA3
Seal	Material	EPDM
	Configuration	O-ring seal
	Size	23.47 x 2.62 mm

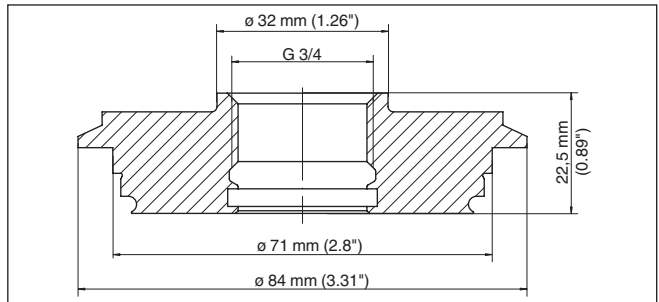


Fig. 49: Dimensions adapter G $\frac{3}{4}$  (DIN 3852-X) on Tuchenhagen DN 32

## 7 Threaded adapter - VEGABAR 80 series

### 7.1 Clamp according to DIN 32676, ISO 2852

#### Thread G1 - Clamp 1½"

Part	Feature	Characteristic
Adapter	Size, sensor side	G1
	Standard	DIN 3852-X
	Size, process side	Clamp 1½"
	Standard	DIN 32676, ISO 2852
	Pressure stage	PN 16
	Material	316L
	Product code/Art. no.	GEWADA-D.GLX
Seal	Sensor side	-

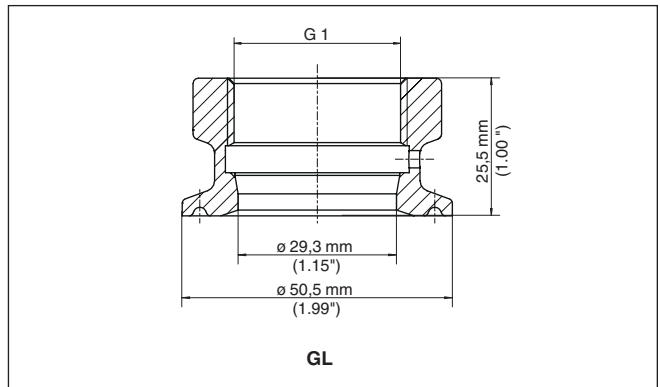


Fig. 50: Dimensions of threaded adapter G1 (DIN 3852-X) on Clamp 1½" (DIN 32676, ISO 2852) PN 16

#### Thread G1 - Clamp 2"

Part	Feature	Characteristic
Adapter	Size, sensor side	G1
	Standard	DIN 3852-X
	Size, process side	Clamp 2"
	Standard	DIN 32676, ISO 2852
	Pressure stage	PN 16
	Material	316L
	Product code/Art. no.	GEWADA-D.GMX
Seal	Sensor side	-

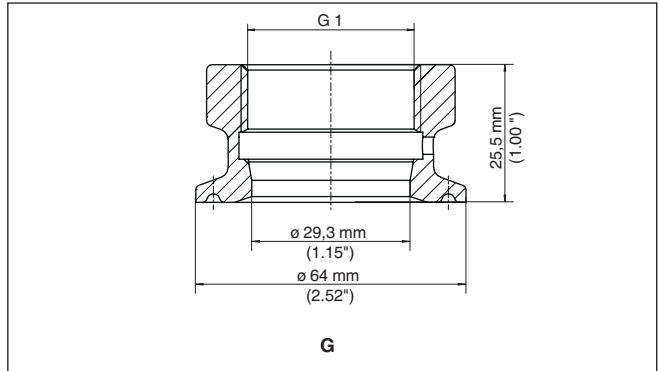


Fig. 51: Dimensions of threaded adapter G1 (DIN 3852-X) on Clamp 2" (DIN 32676, ISO 2852) PN 16

## 7.2 Varivent

### Thread G1 - Varivent Form F 25

Part	Feature	Characteristic
Adapter	Size, sensor side	G1
	Standard	DIN 3852-X
	Size, process side	DN 25/32
	Standard	Varivent
	Pressure stage	PN 16
	Material	316L
	Product code/Art. no.	GEWADA-D.GNX
Seal	Sensor side	-

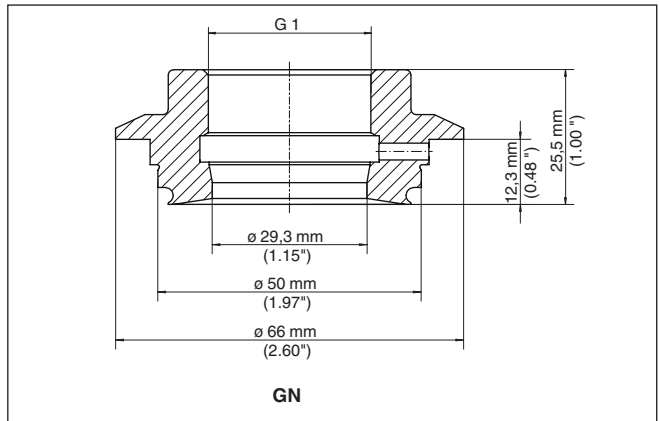


Fig. 52: Dimensions of threaded adapter G1 (DIN 3852-X) on Varivent Form F 25

### Thread G1 - Varivent Form N 50-40

Part	Feature	Characteristic
Adapter	Size, sensor side	G1
	Standard	DIN 3852-X
	Size, process side	DN 40/50
	Standard	Varivent
	Pressure stage	PN 16
	Material	316L
	Product code/Art. no.	GEWADA-D.GOX
Seal	Sensor side	-

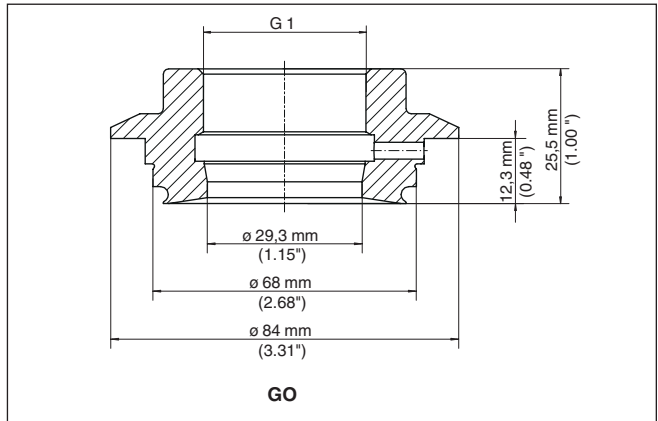


Fig. 53: Dimensions of threaded adapter G1 (DIN 3852-X) on Varivent Form N 50-40

## 8 Threaded adapter - VEGACAP, VEGACAL, VEGAWAVE

### 8.1 VEGACAP 63, 64, VEGACAL 63, 64

Thread G $\frac{3}{4}$  - Clamp 1 $\frac{1}{2}$ "

Part	Feature	Characteristic
Adapter	Size, sensor side	G $\frac{3}{4}$
	Standard	DIN 3852-X
	Size, process side	Clamp 1 $\frac{1}{2}$ "
	Standard	DIN 32676, ISO 2852
	Pressure stage	PN 16
	Material	316L
	Product code/Art. no.	GEWADA-E.GE3
Seal	Material	FKM Vi 780 FDA, EPDM
	Configuration	Seal ring
	Size	$\varnothing$ 50.5 - 35.3 mm

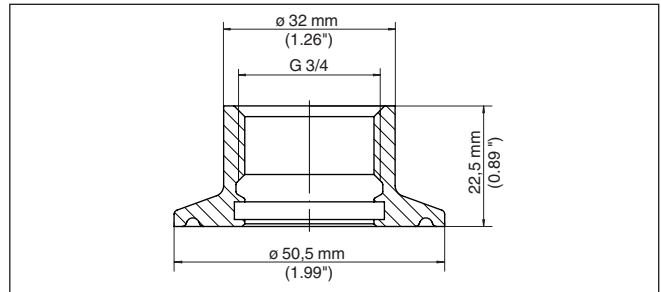


Fig. 54: Dimensions of threaded adapter G $\frac{3}{4}$  (DIN 3852-X) on Clamp 1 $\frac{1}{2}$ " (DIN 32676, ISO 2852) PN 16

Thread G $\frac{3}{4}$  - Clamp 2"

Part	Feature	Characteristic
Adapter	Size, sensor side	G $\frac{3}{4}$
	Standard	DIN 3852-X
	Size, process side	Clamp 2"
	Standard	DIN 32676, ISO 2852
	Pressure stage	PN 16
	Material	316L
	Product code/Art. no.	GEWADA-E.CA3
Seal	Material	Material FKM Vi 780 FDA, EPDM
	Configuration	Seal ring
	Size	$\varnothing$ 64 - 48 mm

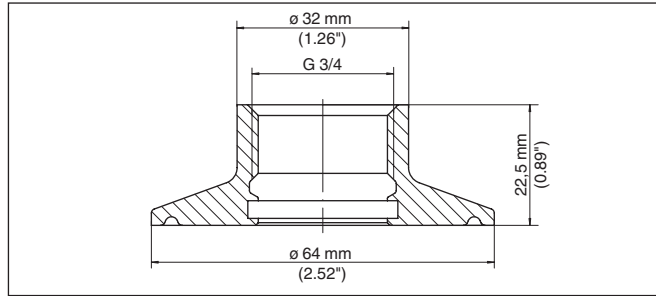


Fig. 55: Dimensions of threaded adapter G1½ (DIN 3852-X) on Clamp 2" (DIN 32676, ISO 2852) PN 16

**Thread G¾ - Slotted nut  
DN 25**

Part	Feature	Characteristic
Adapter	Size, sensor side	G¾
	Standard	DIN 3852-X
	Size, process side	DN 25
	Standard	DIN 11851
	Pressure stage	PN 25
	Material	316L
	Product code/Art. no.	GEWADA-E.CB3
Seal	Material	FKM Vi 780 FDA, EPDM
	Configuration	Seal ring
	Size	ø 54 x 64 x 5 mm

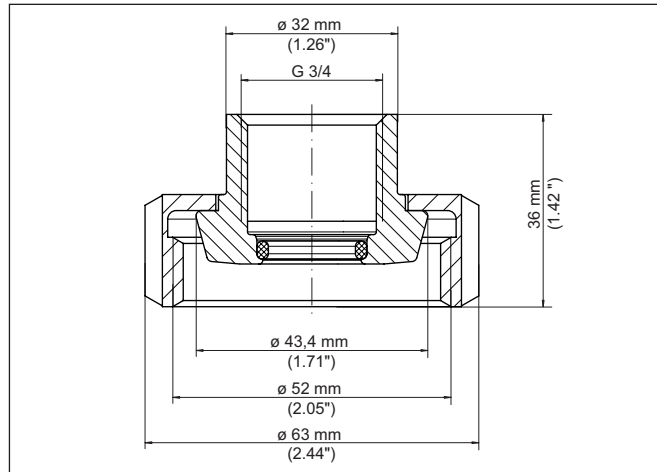


Fig. 56: Dimensions of threaded adapter G¾ (DIN 3852-X) on slotted nut DN 25 (DIN 11851) PN 25

48094-EN-220516



**Thread G $\frac{3}{4}$  - Slotted nut  
DN 50**

Part	Feature	Characteristic
Adapter	Size, sensor side	G $\frac{3}{4}$
	Standard	DIN 3852-X
	Size, process side	DN 50
	Standard	DIN 11851
	Pressure stage	PN 25
	Material	316L
	Product code/Art. no.	GEWADA-E.CBX
Seal	Material	-40 ... 150 °C/-40 ... 302 °F FKM Vi 780 FDA, EPDM
	Configuration	Seal ring
	Size	ø 54 x 64 x 5 mm

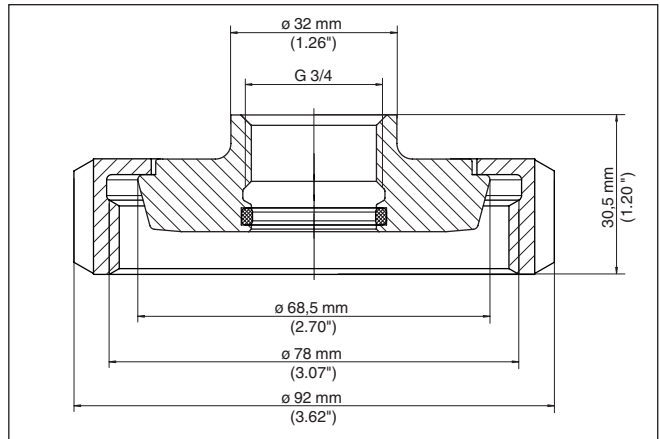


Fig. 57: Dimensions of threaded adapter G $\frac{3}{4}$  (DIN 3852-X) on slotted nut DN 50 (DIN 11851) PN 25

**Thread G $\frac{3}{4}$  - Hygienic  
connection with com-  
pression nut**

Part	Feature	Characteristic
Adapter	Size, sensor side	G $\frac{3}{4}$
	Standard	DIN 3852-X
	Size, process side	DN 40
	Standard	DIN 11851
	Pressure stage	PN 16
	Material	316L
	Product code/Art. no.	GEWADA-E.LA3
Seal	Configuration	Seal ring
	Size	ø 54 x 64 x 5 mm

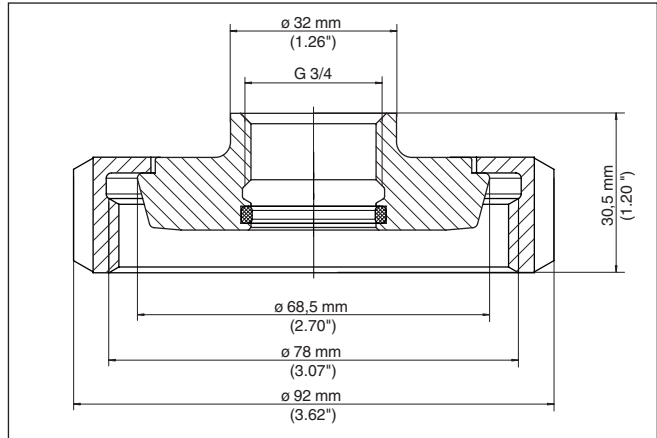


Fig. 58: Dimensions of threaded adapter G $\frac{3}{4}$  (DIN 3852-X) on slotted nut DN 50 (DIN 11851) PN 16

## 8.2 VEGAWAVE 61, 63

### Thread G1 $\frac{1}{2}$ - Clamp 2"

Part	Feature	Characteristic
Adapter	Size, sensor side	G1 $\frac{1}{2}$
	Standard	DIN 3852-X
	Size, process side	Clamp 2"
	Standard	DIN 32676, ISO 2852
	Pressure stage	PN 16
	Material	316L
	Product code/Art. no.	GEWADA-C.CA1
Seal	Material	FKM, EPDM
	Configuration	Seal ring
	Size	$\varnothing$ 64 - 48 mm

**Dimensions:**

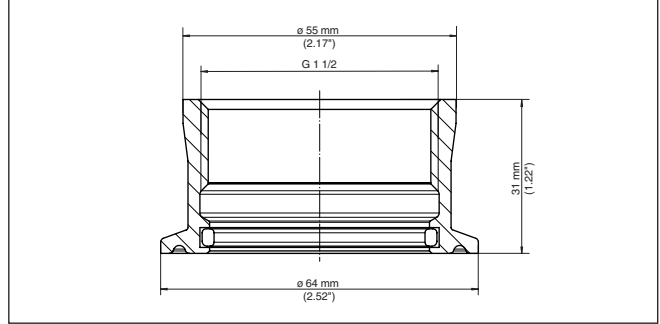


Fig. 59: Dimensions of threaded adapter G1½ (DIN 3852-X) on Clamp 2" (DIN 32676, ISO 2852) PN 16

**Thread G1½ - Clamp 2½"**

Part	Feature	Characteristic
Adapter	Size, sensor side	G1½
	Standard	DIN 3852-X
	Size, process side	Clamp 2½"
	Standard	DIN 32676, ISO 2852
	Pressure stage	PN 16
	Material	316L
	Product code/Art. no.	GEWADA-C.CD3
Seal	Material	FKM FDA, EPDM FDA
	Configuration	Seal ring
	Size	ø 77.5 - 60.7 mm

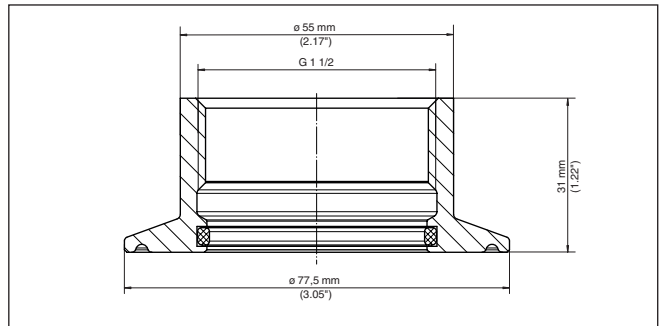


Fig. 60: Dimensions of threaded adapter G1½ (DIN 3852-X) on Clamp 2½" (DIN 32676, ISO 2852) PN 16

### Thread G1½ - Slotted nut DN 50 - DIN 11851

Part	Feature	Characteristic
Adapter	Size, sensor side	G1½
	Standard	DIN 3852-X
	Size, process side	DN 50
	Standard	DIN 11851
	Pressure stage	PN 16
	Material	316L
	Product code/Art. no.	GEWADA-B.RB3
Seal	Material	FKM Vi 780 FDA, EPDM FDA
	Configuration	Seal ring
	Size	ø 54 x 64 x 5 mm

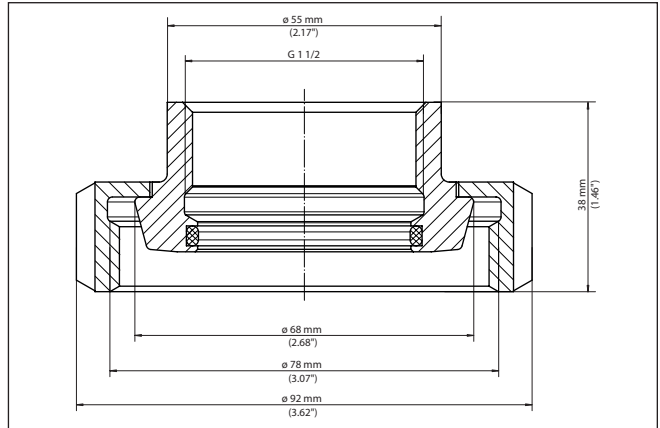


Fig. 61: Dimensions of threaded adapter G1½ (DIN 3852-X) on slotted nut DN 50 (DIN 11851) PN 16

### Thread G1½ - Slotted nut DN 50 - DIN 11864-1

#### Data:

Part	Feature	Characteristic
Adapter	Size, sensor side	G1½
	Standard	DIN 3852-X
	Size, process side	DN 40
	Standard	DIN 11864-1
	Pressure stage	PN 16
	Material	316L
	Product code/Art. no.	GEWADA-B.RF3
Seal	Material	FKM Vi 780 FDA, EPDM FDA
	Configuration	Seal ring
	Size	ø 54 x 64 x 5 mm

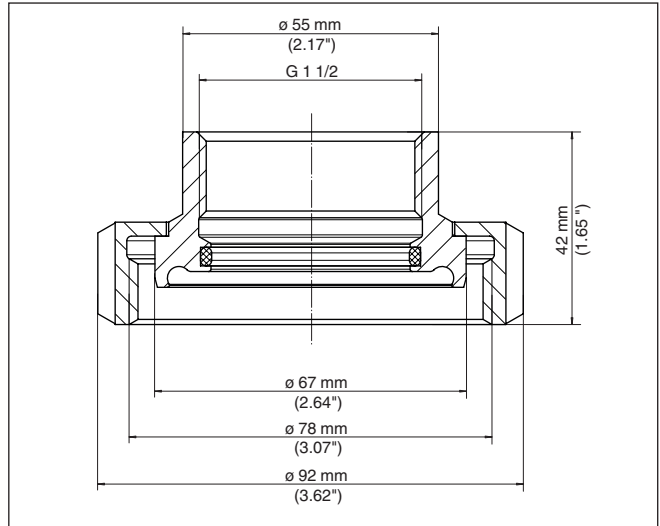


Fig. 62: Dimensions of threaded adapter G1½ (DIN 3852-X) on slotted nut DN 50 (DIN 11864-1) PN 16

## 9 Welding, mounting

### 9.1 Welding instructions



#### Information:

The following welding instructions are for information only. It is important that the welding regulations are always observed. The AD leaflets must also be noted when welding on pressure vessels.

#### Preparations

When welding stainless steel, utmost cleanliness is necessary. Rusty tools or screwed parts, e.g., are not allowed. Also make sure that no mild steel is processed in the vicinity.

Use sufficient inert gas for tack welding. Make sure that you only tack weld, not spot-weld. For tacking and welding, use pure argon protective gas.

#### Welding dummy

A suitable welding dummy must be used to avoid warping the welded socket.

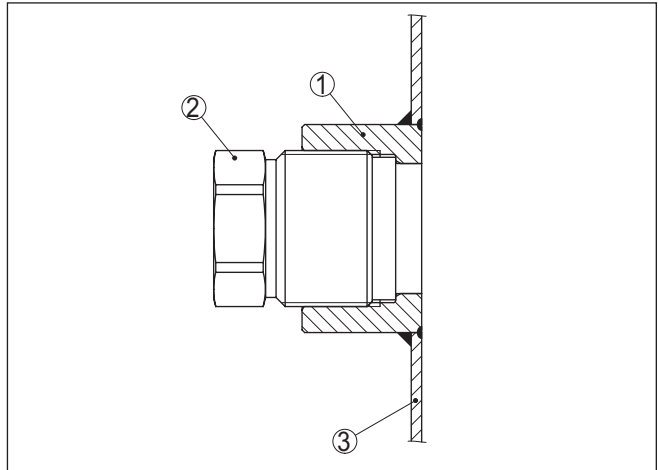


Fig. 63: Welding dummy

- 1 Welded socket
- 2 Dummy
- 3 Pipeline or vessel wall

#### Welding procedure

It is generally recommended to divide the weld joint into several segments.

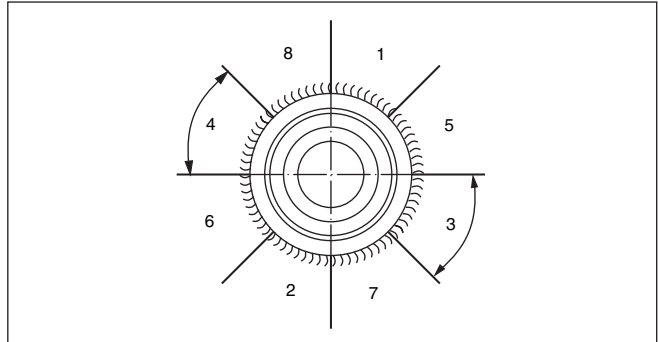


Fig. 64: Segmental welding

After welding a segment, go to the other side and weld the segment that lies exactly opposite. Interrupt the welding process after two segments and wait until the weld joint cools or carefully cool the weld joint yourself before you start welding again.

**Pressure bearing capacity**

The pressure bearing capacity of the welded socket depends on the quality of the weld as well as the material of the welded socket. In the case of threaded sockets, the total thread length must be utilized for pressure loading.

**9.2 Mounting instructions threaded and hygienic adapter**

**Preparations**

Use suitable spanners to screw the sensor into the adapter. The specifications are stated in the appropriate chapters of this manual or in the operating instructions manual of the respective sensor.

**Mounting**

Place the parts, especially with hygienic adapters, on a suitable, clean surface (e.g. workbench) and screw them together with the respective specified torque.



**Note:**

Avoid damage to the surface of the process fitting and adapter. Any damage can particularly impair the hygienic properties.



**Note:**

The cone seals metal/metal or plastic/metal provide a secure sealing when tightened once.

Loosening and retightening reduces the quality of the contact surfaces. Leakage, product leakage and contamination can be the result.

Printing date:

# VEGA

All statements concerning scope of delivery, application, practical use and operating conditions of the sensors and processing systems correspond to the information available at the time of printing.

Subject to change without prior notice

© VEGA Grieshaber KG, Schiltach/Germany 2022



48094-EN-220516

VEGA Grieshaber KG  
Am Hohenstein 113  
77761 Schiltach  
Germany

Phone +49 7836 50-0  
E-mail: [info.de@vega.com](mailto:info.de@vega.com)  
[www.vega.com](http://www.vega.com)