

Aanvullende handleiding

Flenzen conform DIN - EN - ASME - JIS - GOST

Technische gegevens



Document ID: 31088



VEGA

Inhoudsopgave

1	Productbeschrijving	3
1.1	Instellingen	3
2	Afmetingen	4
2.1	DIN-flenzen (DIN 2501)	4
2.2	EN-flens (EN 1092-1)	8
2.3	ASME-flens (ASME B16.5)	12
2.4	JIS-flens (B 2210-1984)	16
2.5	GOST-flens (GOST 12815-80)	17
3	Druk-temperatuur tabellen	21
3.1	Druk-temperatuurtabel - EN-flens	21
3.2	Druk-temperatuurtabel - ASME-flens	21
3.3	Druk-temperatuurtabel - GOST-flens	22

1 Productbeschrijving

1.1 Instellingen

De beschreven flenzen zijn schroefdraadflenzen met raised fase en kunnen met G1 of G1½ binnendraad (ISO 228 T1) worden geleverd.

De specificaties in deze aanvullende handleiding hebben betrekking op flenzen van het materiaal 316/316L. Het materiaal 316 komt overeen met 1.4401, het materiaal 316L komt overeen met 1.4404. Andere materialen op aanvraag.

Alle afstandswaarden in millimeter.

De flenzen zijn leverbaar in verschillende uitvoeringen volgens de volgende normen:

DIN: Deutsches Institut für Normung (DIN 2501)

EN: Europese Norm (EN 1092-1)

ASME: American Society of Mechanical Engineers (ASME B 16.5)

JIS: Japanese Industrial Standard (B 2210-1984)

GOST: Federale agentschap voor technische regeling en metrologi - Rusland (12821-80)

2 Afmetingen

2.1 DIN-flenzen (DIN 2501)

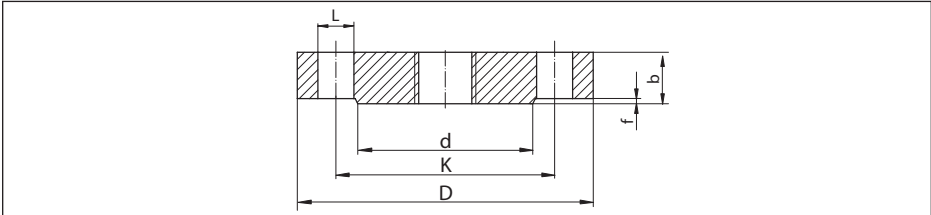


Fig. 1: Afmetingen: DIN-flens DIN 2501 (raised face DIN 2526 vorm C)

- L Boringdiameter (aantal boringen)
 d Diameter van de raised face
 K Hartafstand
 D Flensdiameter
 b Totale dikte van de flens
 f Hoogte raised face

PN 10

DN	D	b	K	d	f	L	~ kg
25 (0.984)	115 (4.528)	16 (0.63)	85 (3.347)	68 (2.677)	2 (0.079)	4 x \varnothing 14 (0.551)	1,23 (2.712)
32 (1.26)	140 (5.512)	16 (0.63)	100 (3.937)	78 (3.071)	2 (0.079)	4 x \varnothing 18 (0.709)	1,8 (3.968)
40 (1.575)	150 (5.906)	16 (0.63)	110 (4.331)	88 (3.465)	3 (0.118)	4 x \varnothing 18 (0.709)	2,09 (4.608)
50 (1.969)	165 (6.496)	18 (0.709)	125 (4.921)	102 (4.016)	3 (0.118)	4 x \varnothing 18 (0.709)	2,88 (6.349)
65 (2.56)	185 (7.284)	18 (0.709)	145 (5.709)	122 (4.803)	3 (0.118)	4 x \varnothing 18 (0.709)	3,66 (8.069)
80 (3.15)	200 (7.874)	20 (0.787)	160 (6.3)	138 (5.433)	3 (0.118)	8 x \varnothing 18 (0.709)	4,83 (10.65)
100 (3.937)	220 (8.661)	20 (0.787)	180 (7.087)	158 (6.221)	3 (0.118)	8 x \varnothing 18 (0.709)	5,75 (12.68)
125 (4.921)	250 (9.843)	22 (0.866)	210 (8.268)	188 (7.402)	3 (0.118)	8 x \varnothing 18 (0.709)	8,59 (18.94)
150 (5.906)	285 (11.22)	22 (0.866)	240 (9.449)	212 (8.347)	3 (0.118)	8 x \varnothing 22 (0.866)	10,6 (23.37)
175 (6.89)	316 (12.44)	24 (0.945)	270 (10.63)	242 (9.528)	3 (0.118)	8 x \varnothing 22 (0.866)	14,3 (31.53)
200 (7.874)	340 (13.39)	24 (0.945)	295 (11.61)	268 (10.55)	3 (0.118)	8 x \varnothing 22 (0.866)	16,9 (37.26)
250 (9.843)	395 (15.55)	26 (1.024)	350 (13.78)	320 (12.6)	3 (0.118)	12 x \varnothing 22 (0.866)	24,7 (54.45)
300 (11.81)	445 (17.52)	26 (1.024)	400 (15.75)	370 (14.57)	4 (0.158)	12 x \varnothing 22 (0.866)	31,9 (70.33)

Tab. 1: Afmetingen: DIN-flens PN10. Alle afstandswaarden in millimeter (in).

PN 16

DN	D	b	K	d	f	L	~ kg
25 (0.984)	115 (4.528)	16 (0.63)	85 (3.346)	68 (2.677)	2 (0.079)	4 x ø 14 (0.551)	1,23 (2.712)
32 (1.26)	140 (5.512)	16 (0.63)	100 (3.937)	78 (3.071)	2 (0.079)	4 x ø 18 (0.709)	1,8 (3.968)
40 (1.575)	150 (5.906)	16 (0.63)	110 (4.331)	88 (3.465)	3 (0.118)	4 x ø 18 (0.709)	2,09 (4.608)
50 (1.969)	165 (6.496)	18 (0.709)	125 (4.921)	102 (4.016)	3 (0.118)	4 x ø 18 (0.709)	2,88 (6.349)
65 (2.559)	185 (7.283)	18 (0.709)	145 (5.709)	122 (4.803)	3 (0.118)	4 x ø 18 (0.709)	3,66 (8.069)
80 (3.15)	200 (7.874)	20 (0.787)	160 (6.299)	138 (5.433)	3 (0.118)	8 x ø 18 (0.709)	4,83 (10.65)
100 (3.937)	220 (8.661)	20 (0.787)	180 (7.087)	158 (6.220)	3 (0.118)	8 x ø 18 (0.709)	5,75 (12.68)
125 (4.921)	250 (9.843)	22 (0.866)	210 (8.268)	188 (7.402)	3 (0.118)	8 x ø 18 (0.709)	8,59 (18.94)
150 (5.906)	285 (11.22)	22 (0.866)	240 (9.449)	212 (8.346)	3 (0.118)	8 x ø 22 (0.866)	10,6 (23.37)
175 (6.89)	316 (12.44)	24 (0.945)	270 (10.63)	242 (9.528)	3 (0.118)	8 x ø 22 (0.866)	14,3 (31.53)
200 (7.874)	340 (13.39)	24 (0.945)	295 (11.61)	268 (10.55)	3 (0.118)	12 x ø 22 (0.866)	16,5 (36.38)
250 (9.843)	405 (15.95)	26 (1.024)	355 (13.98)	320 (12.6)	3 (0.118)	12 x ø 26 (1.024)	25,6 (56.44)
300 (11.81)	460 (18.11)	28 (1.102)	410 (16.14)	378 (14.88)	4 (0.157)	12 x ø 26 (1.024)	36,1 (79.59)

Tab. 2: Afmetingen: DIN-flens PN16. Alle afstandswaarden in millimeter (in).

PN 25

DN	D	b	K	d	f	L	~ kg
25 (0.984)	115 (4.528)	18 (0.709)	85 (3.346)	68 (2.677)	2 (0.079)	4 x ø 14 (0.551)	1,38 (3.042)
32 (1.26)	140 (5.512)	18 (0.709)	100 (3.937)	78 (3.071)	2 (0.079)	4 x ø 18 (0.709)	2,03 (4.475)
40 (1.575)	150 (5.906)	18 (0.709)	110 (4.331)	88 (3.465)	3 (0.118)	4 x ø 18 (0.709)	2,35 (5.101)
50 (1.969)	165 (6.496)	20 (0.787)	125 (4.921)	102 (4.016)	3 (0.118)	4 x ø 18 (0.709)	3,2 (7.055)
65 (2.56)	185 (7.283)	22 (0.866)	145 (5.709)	122 (4.803)	3 (0.118)	8 x ø 18 (0.709)	4,33 (9.546)
80 (3.15)	200 (7.874)	24 (0.945)	160 (6.3)	138 (5.433)	3 (0.118)	8 x ø 18 (0.709)	5,94 (13.1)

DN	D	b	K	d	f	L	~ kg
100 (3.937)	235 (9.252)	24 (0.945)	190 (7.48)	162 (6.378)	3 (0.118)	8 x ø 22 (0.866)	7,64 (16.84)
125 (4.921)	270 (10.63)	26 (1.024)	220 (8.661)	188 (7.402)	3 (0.118)	8 x ø 26 (1.024)	11 (24.25)
150 (5.906)	300 (11.81)	28 (1.102)	250 (9.843)	218 (8.583)	3 (0.118)	8 x ø 26 (1.024)	14,7 (32.41)
175 (6.89)	330 (12.99)	28 (1.102)	280 (11.02)	248 (9.764)	3 (0.118)	12 x ø 26 (1.024)	17,6 (38.80)
200 (7.874)	360 (14.17)	30 (1.181)	310 (12.21)	278 (10.95)	3 (0.118)	12 x ø 26 (1.024)	22,7 (50.05)
250 (9.843)	425 (16.73)	32 (1.26)	370 (14.57)	335 (13.19)	3 (0.118)	16 x ø 30 (1.181)	34,2 (75.4)
300 (11.81)	485 (19.09)	34 (1.339)	430 (16.93)	395 (15.55)	4 (0.157)	16 x ø 30 (1.181)	47,3 (104.3)

Tab. 3: Afmetingen: DIN-flens PN25. Alle afstandswaarden in millimeter (in).

PN 40

DN	D	b	K	d	f	L	~ kg
25 (0.984)	115 (4.528)	18 (0.709)	85 (3.346)	68 (2.677)	2 (0.079)	4 x ø 14 (0.551)	1,38 (3.042)
32 (1.260)	140 (5.512)	18 (0.709)	100 (3.937)	78 (3.071)	2 (0.079)	4 x ø 18 (0.709)	2,03 (4.475)
40 (1.575)	150 (5.906)	18 (0.709)	110 (4.331)	88 (3.465)	3 (0.118)	4 x ø 18 (0.709)	2,35 (5.101)
50 (1.969)	165 (6.496)	20 (0.787)	125 (4.921)	102 (4.016)	3 (0.118)	4 x ø 18 (0.709)	3,2 (7.055)
65 (2.560)	185 (7.283)	22 (0.866)	145 (5.709)	122 (4.803)	3 (0.118)	8 x ø 18 (0.709)	4,33 (9.546)
80 (3.150)	200 (7.874)	24 (0.945)	160 (6.299)	138 (5.433)	3 (0.118)	8 x ø 18 (0.709)	5,94 (13.1)
100 (3.937)	235 (9.252)	24 (0.945)	190 (7.48)	162 (6.378)	3 (0.118)	8 x ø 22 (0.866)	7,64 (16.84)
125 (4.921)	270 (10.63)	26 (1.024)	220 (8.661)	188 (7.402)	3 (0.118)	8 x ø 26 (1.024)	11 (24.25)
150 (5.906)	300 (11.81)	28 (1.102)	250 (9.843)	218 (8.583)	3 (0.118)	8 x ø 26 (1.024)	14,7 (32.41)
175 (6.89)	350 (13.78)	32 (1.26)	295 (11.61)	260 (10.24)	3 (0.118)	12 x ø 30 (1.181)	22,4 (49.38)
200 (7.874)	375 (14.76)	34 (1.339)	320 (12.6)	285 (11.22)	3 (0.118)	12 x ø 30 (1.181)	27,6 (60.85)
250 (9.843)	450 (17.72)	38 (1.496)	385 (15.16)	345 (13.58)	3 (0.118)	12 x ø 33 (1.299)	44,5 (98.11)
300 (11.81)	515 (20.28)	42 (1.654)	450 (17.72)	410 (16.14)	4 (0.157)	16 x ø 33 (1.299)	64,3 (141.8)

Tab. 4: Afmetingen: DIN-flens PN 40. Alle afstandswaarden in millimeter (in).

PN 64

DN	D	b	K	d	f	L	~ kg
25 (0.984)	140 (5.512)	24 (0.945)	100 (3.937)	68 (2.677)	2 (0.079)	4 x ø 18 (0.709)	2,65 (5.842)
32 (1.260)	155 (6.102)	24 (0.945)	110 (4.331)	78 (3.071)	2 (0.079)	4 x ø 22 (0.866)	3,24 (7.143)
40 (1.575)	170 (6.693)	26 (1.024)	125 (4.921)	88 (3.465)	3 (0.118)	4 x ø 22 (0.866)	4,09 (9.017)
50 (1.969)	180 (7.087)	26 (1.024)	135 (5.315)	102 (4.016)	3 (0.118)	4 x ø 22 (0.866)	4,51 (9.943)
65 (2.559)	205 (8.071)	26 (1.024)	160 (6.299)	122 (4.803)	3 (0.118)	8 x ø 22 (0.866)	5,71 (12.59)
80 (3.15)	215 (8.465)	28 (1.102)	170 (6.693)	138 (5.433)	3 (0.118)	8 x ø 22 (0.866)	6,92 (15.26)
100 (3.937)	250 (9.843)	30 (1.181)	200 (7.874)	162 (6.378)	3 (0.118)	8 x ø 26 (1.024)	10,1 (22.27)
125 (4.921)	295 (11.61)	34 (1.339)	240 (9.449)	188 (7.402)	3 (0.118)	8 x ø 30 (1.181)	16 (35.27)
150 (5.906)	345 (13.58)	36 (1.417)	280 (11.02)	218 (8.583)	3 (0.118)	8 x ø 33 (1.299)	23,5 (51.81)
175 (6.9)	375 (14.76)	40 (1.575)	310 (12.21)	260 (10.24)	3 (0.118)	12 x ø 33 (1.299)	30,8 (67.9)
200 (7.874)	415 (16.34)	42 (1.654)	345 (13.58)	285 (11.22)	3 (0.118)	12 x ø 36 (1.417)	39,7 (87.52)
250 (9.843)	470 (18.5)	46 (1.811)	400 (15.75)	345 (13.58)	3 (0.118)	12 x ø 36 (1.417)	57,4 (126.5)
300 (11.81)	530 (20.87)	52 (2.047)	460 (18.11)	410 (16.14)	4 (0.157)	16 x ø 36 (1.417)	81 (178.6)

Tab. 5: Afmetingen: DIN-flens PN64. Alle afstandswaarden in millimeter (in).

PN 100

DN	D	b	K	d	f	L	~ kg
25 (0.984)	140 (5.512)	24 (0.945)	100 (3.937)	68 (2.677)	2 (0.079)	4 x ø 18 (0.709)	2,65 (5.842)
32 (1.26)	155 (6.102)	24 (0.945)	110 (4.331)	78 (3.071)	2 (0.079)	4 x ø 22 (0.866)	3,24 (7.143)
40 (1.575)	170 (6.693)	26 (1.024)	125 (4.921)	88 (3.465)	3 (0.118)	4 x ø 22 (0.866)	4,09 (9.017)
50 (1.969)	195 (7.677)	28 (1.102)	145 (5.709)	102 (4.016)	3 (0.118)	4 x ø 26 (1.024)	5,84 (12.88)
65 (2.56)	220 (8.661)	30 (1.181)	170 (6.693)	122 (4.803)	3 (0.118)	8 x ø 26 (1.024)	8,03 (17.7)
80 (3.15)	230 (9.055)	32 (1.26)	180 (7.087)	138 (5.433)	3 (0.118)	8 x ø 26 (1.024)	9,43 (20.79)
100 (3.937)	265 (10.43)	36 (1.417)	210 (8.268)	162 (6.378)	3 (0.118)	8 x ø 30 (1.181)	14,3 (31.53)

DN	D	b	K	d	f	L	~ kg
125 (4.921)	315 (12.4)	40 (1.575)	250 (9.843)	188 (7.402)	3 (0.118)	8 x \varnothing 33 (1.299)	22,6 (49.82)
150 (5.906)	355 (13.98)	44 (1.732)	290 (11.42)	218 (8.583)	3 (0.118)	12 x \varnothing 33 (1.299)	31,8 (70.11)
175 (6.89)	385 (15.16)	48 (1.89)	320 (12.6)	260 (10.24)	3 (0.118)	12 x \varnothing 33 (1.3)	41,3 (91.05)
200 (7.874)	430 (16.93)	52 (2.047)	360 (14.17)	285 (11.22)	3 (0.118)	12 x \varnothing 36 (1.417)	56,1 (123.7)
250 (9.843)	505 (19.88)	60 (2.362)	430 (16.93)	345 (13.58)	3 (0.118)	12 x \varnothing 39 (1.535)	89,6 (197.5)
300 (11.81)	585 (23.03)	68 (2.677)	500 (19.69)	410 (16.14)	4 (0.157)	16 x \varnothing 42 (1.654)	119 (262.4)

Tab. 6: Afmetingen: DIN-flens PN100. Alle afstandswaarden in millimeter (in).

2.2 EN-flens (EN 1092-1)

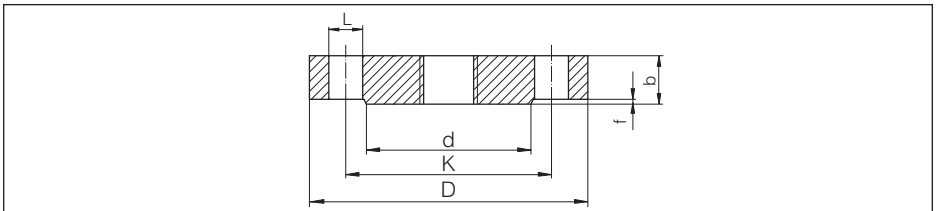


Fig. 2: Afmetingen: EN-flens EN 1092-1 (raised face B1)

- L Boringdiameter (aantal boringen)
- d Diameter van de raised face
- K Hartafstand
- D Flensdiameter
- b Totale dikte van de flens
- f Hoogte raised face

PN 16

DN	D	b	K	d	f	L	~ kg
25 (0.984)	115 (4.528)	18 (0.709)	85 (3.346)	68 (2.677)	2 (0.079)	4 x \varnothing 14 (0.551)	1,5 (3.307)
32 (1.26)	140 (5.512)	18 (0.709)	100 (3.937)	78 (3.071)	2 (0.079)	4 x \varnothing 18 (0.709)	2 (4.409)
40 (1.575)	150 (5.906)	18 (0.709)	110 (4.331)	88 (3.465)	2 (0.079)	4 x \varnothing 18 (0.709)	2,5 (5.512)
50 (1.969)	165 (6.496)	18 (0.709)	125 (4.921)	102 (4.016)	2 (0.079)	4 x \varnothing 18 (0.709)	2,9 (6.393)
65 (2.559)	185 (7.283)	18 (0.709)	145 (5.709)	122 (4.803)	2 (0.079)	8 x \varnothing 18 (0.709)	3,5 (7.716)
80 (3.15)	200 (7.874)	20 (0.787)	160 (6.299)	138 (5.433)	2 (0.079)	8 x \varnothing 18 (0.709)	4,5 (9.921)

DN	D	b	K	d	f	L	~ kg
100 (3.937)	220 (8.661)	20 (0.787)	180 (7.087)	158 (6.221)	2 (0.079)	8 x ø 18 (0.709)	5,5 (12.13)
125 (4.921)	250 (9.843)	22 (0.866)	210 (8.268)	188 (7.402)	2 (0.079)	8 x ø 18 (0.709)	8 (17.64)
150 (5.906)	285 (11.22)	22 (0.866)	240 (9.449)	212 (8.346)	2 (0.079)	8 x ø 22 (0.866)	10,5 (23.15)
200 (7.874)	340 (13.39)	24 (0.945)	295 (11.61)	268 (10.55)	2 (0.079)	12 x ø 22 (0.866)	16,5 (36.38)
250 (9.843)	405 (15.95)	26 (1.024)	355 (13.98)	320 (12.6)	2 (0.079)	12 x ø 26 (1.024)	25 (55.12)
300 (11.81)	460 (18.11)	28 (1.102)	410 (16.14)	378 (14.88)	2 (0.079)	12 x ø 26 (1.024)	35 (77.16)

Tab. 7: Afmetingen: EN-flens PN16. Alle afstandswaarden in millimeter (in).

PN 25

DN	D	b	K	d	f	L	~ kg
25 (0.984)	115 (4.528)	18 (0.709)	85 (3.346)	68 (2.677)	2 (0.079)	4 x ø 14 (0.551)	1,5 (3.307)
32 (1.260)	140 (5.511)	18 (0.709)	100 (3.937)	78 (3.071)	2 (0.079)	4 x ø 18 (0.709)	2 (4.409)
40 (1.575)	150 (5.906)	18 (0.709)	100 (3.937)	88 (3.465)	2 (0.079)	4 x ø 18 (0.709)	2,5 (5.512)
50 (1.969)	165 (6.496)	20 (0.787)	125 (4.921)	102 (4.016)	2 (0.079)	4 x ø 18 (0.709)	3 (6.614)
65 (2.559)	185 (7.284)	22 (0.866)	145 (5.709)	122 (4.803)	2 (0.079)	8 x ø 18 (0.709)	4,5 (9.921)
80 (3.15)	200 (7.874)	24 (0.945)	160 (6.299)	138 (5.433)	2 (0.079)	8 x ø 18 (0.709)	5,5 (12.13)
100 (3.937)	235 (9.252)	24 (0.945)	190 (7.48)	162 (6.378)	2 (0.079)	8 x ø 22 (0.866)	7,5 (16.54)
125 (4.921)	270 (10.63)	26 (1.024)	220 (8.661)	188 (7.402)	2 (0.079)	8 x ø 26 (1.024)	11 (24.25)
150 (5.906)	300 (11.81)	28 (1.102)	250 (9.843)	218 (8.583)	2 (0.079)	8 x ø 26 (1.024)	14,5 (31.97)
200 (7.874)	360 (14.17)	30 (1.181)	310 (12.21)	278 (10.95)	2 (0.079)	12 x ø 26 (1.024)	22,5 (49.6)
250 (9.843)	425 (16.73)	32 (1.26)	370 (14.57)	335 (13.19)	2 (0.079)	12 x ø 30 (1.181)	33,5 (73.86)
300 (11.81)	485 (19.09)	34 (1.339)	430 (16.93)	395 (15.55)	2 (0.079)	16 x ø 30 (1.181)	46,5 (102.5)

Tab. 8: Afmetingen: EN-flens PN 25. Alle afstandswaarden in millimeter (in).

PN 40

DN	D	b	K	d	f	L	~ kg
25 (0.984)	115 (4.528)	18 (0.709)	85 (3.346)	68 (2.677)	2 (0.079)	4 x ø 14 (0.551)	1,5 (3.307)
32 (1.260)	140 (5.512)	18 (0.709)	100 (3.937)	78 (3.071)	2 (0.079)	4 x ø 18 (0.709)	2 (4.409)
40 (1.575)	150 (5.906)	18 (0.709)	110 (4.331)	88 (3.465)	3 (0.118)	4 x ø 18 (0.709)	2,5 (5.512)
50 (1.969)	165 (6.496)	20 (0.787)	125 (4.921)	102 (4.016)	3 (0.118)	4 x ø 18 (0.709)	3 (6.614)
65 (2.559)	185 (7.283)	22 (0.866)	145 (5.709)	122 (4.803)	3 (0.118)	8 x ø 18 (0.709)	4,5 (9.921)
80 (3.15)	200 (7.874)	24 (0.945)	160 (6.299)	138 (5.433)	3 (0.118)	8 x ø 18 (0.709)	5,5 (12.13)
100 (3.937)	235 (9.252)	24 (0.945)	190 (7.48)	162 (6.378)	3 (0.118)	8 x ø 22 (0.866)	7,5 (16.54)
125 (4.921)	270 (10.63)	26 (1.024)	220 (8.661)	188 (7.402)	3 (0.118)	8 x ø 26 (1.024)	11 (24.25)
150 (5.906)	300 (11.81)	28 (1.102)	250 (9.843)	218 (8.583)	3 (0.118)	8 x ø 26 (1.024)	14,5 (31.97)
200 (7.874)	375 (14.76)	36 (1.417)	320 (12.6)	285 (11.22)	3 (0.118)	12 x ø 30 (1.181)	29 (63.93)
250 (9.843)	450 (17.72)	38 (1.496)	385 (15.16)	345 (13.58)	3 (0.118)	12 x ø 33 (1.299)	44,5 (98.11)
300 (11.81)	515 (20.28)	42 (1.654)	450 (17.72)	410 (16.14)	4 (0.157)	16 x ø 33 (1.299)	64 (141.1)

Tab. 9: Afmetingen: EN-flens PN 40. Alle afstandswaarden in millimeter (in).

PN 63

DN	D	b	K	d	f	L	~ kg
25 (0.984)	140 (5.512)	24 (0.945)	100 (3.937)	68 (2.677)	2 (0.079)	4 x ø 18 (0.709)	2,5 (5.512)
32 (1.26)	155 (6.102)	24 (0.945)	110 (4.331)	78 (3.071)	2 (0.079)	4 x ø 22 (0.866)	3,5 (7.716)
40 (1.575)	170 (6.693)	26 (1.024)	125 (4.921)	88 (3.465)	2 (0.079)	4 x ø 22 (0.866)	4,5 (9.921)
50 (1.969)	180 (7.087)	26 (1.024)	135 (5.315)	102 (4.016)	2 (0.079)	4 x ø 22 (0.866)	5 (11.02)
65 (2.56)	205 (8.071)	26 (1.024)	160 (6.3)	122 (4.803)	2 (0.079)	8 x ø 22 (0.866)	6 (13.23)
80 (3.15)	215 (8.465)	28 (1.102)	170 (6.693)	138 (5.433)	2 (0.079)	8 x ø 22 (0.866)	7,5 (16.54)
100 (3.937)	250 (9.843)	30 (1.181)	200 (7.874)	162 (6.378)	2 (0.079)	8 x ø 26 (1.024)	10,5 (23.15)
125 (4.921)	295 (11.61)	34 (1.339)	240 (9.449)	188 (7.402)	2 (0.079)	8 x ø 30 (1.181)	16,5 (36.38)

DN	D	b	K	d	f	L	~ kg
150 (5.906)	345 (13.58)	36 (1.417)	280 (11.02)	218 (8.583)	2 (0.079)	8 x ø 33 (1.299)	24,5 (54.01)
200 (7.874)	415 (16.34)	42 (1.654)	345 (13.58)	285 (11.22)	2 (0.079)	12 x ø 36 (1.417)	40,5 (89.29)
250 (9.843)	470 (18.5)	46 (1.811)	400 (15.75)	345 (13.58)	3 (0.118)	12 x ø 36 (1.417)	58 (127.9)
300 (11.81)	530 (20.87)	52 (2.047)	460 (18.11)	410 (16.14)	2 (0.079)	16 x ø 36 (1.417)	83,5 (184.1)

Tab. 10: Afmetingen: EN-flens PN 63. Alle afstandswaarden in millimeter (in).

PN 100

DN	D	b	K	d	f	L	~ kg
25 (0.984)	140 (5.512)	24 (0.945)	100 (3.937)	68 (2.677)	2 (0.079)	4 x ø 18 (0.709)	2,5 (5.512)
32 (1.26)	155 (6.102)	24 (0.945)	110 (4.331)	78 (3.071)	2 (0.079)	4 x ø 22 (0.866)	3,5 (7.716)
40 (1.575)	170 (6.693)	26 (1.024)	125 (4.921)	88 (3.465)	2 (0.079)	4 x ø 22 (0.866)	4,5 (9.921)
50 (1.969)	195 (7.677)	28 (1.102)	145 (5.709)	102 (4.016)	2 (0.079)	4 x ø 26 (1.024)	6 (13.23)
65 (2.56)	220 (8.661)	30 (1.181)	170 (6.693)	122 (4.803)	2 (0.079)	8 x ø 26 (1.024)	8 (17.64)
80 (3.15)	230 (9.055)	32 (1.26)	180 (7.087)	138 (5.433)	2 (0.079)	8 x ø 26 (1.024)	9,5 (20.94)
100 (3.937)	265 (10.43)	36 (1.417)	210 (8.268)	162 (6.378)	2 (0.079)	8 x ø 30 (1.181)	14 (30.87)
125 (4.921)	315 (12.4)	40 (1.575)	250 (9.843)	188 (7.402)	2 (0.079)	8 x ø 33 (1.299)	22,5 (49.6)
150 (5.906)	355 (13.98)	44 (1.732)	290 (11.42)	218 (8.583)	2 (0.079)	12 x ø 33 (1.299)	30,5 (67.24)
200 (7.874)	430 (16.93)	52 (2.047)	360 (14.17)	285 (11.22)	2 (0.079)	12 x ø 36 (1.417)	54,5 (120.2)
250 (9.843)	505 (19.88)	60 (2.362)	430 (16.93)	345 (13.58)	2 (0.079)	12 x ø 39 (1.535)	87,5 (192.9)
300 (11.81)	585 (23.03)	68 (2.677)	500 (19.69)	410 (16.14)	2 (0.079)	16 x ø 42 (1.654)	131,5 (289.9)

Tab. 11: Afmetingen: EN-flens PN 100. Alle afstandswaarden in millimeter (in).

2.3 ASME-flens (ASME B16.5)

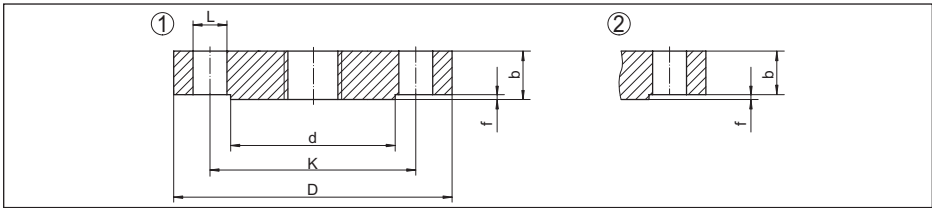


Fig. 3: Afmetingen: ASME-flens B 16.5 (raised face RF)

1 Maatvoering tot Class 400

2 Maatvoering vanaf Class 400

L Boringdiameter (aantal boringen)

d Diameter van de raised face

K Hartafstand

D Flensdiameter

b Totale dikte van de flens

f Hoogte raised face 150 lb/300 lb: 1,6 mm (0.06 in) resp. vanaf 600 lb: 6,4 mm (0.25 in)

Class 150

DN	D	b	d	K	L	~ kg
1"	108 (4.252)	14,2 (0.559)	50,8 (2)	79,2 (3.118)	4 x ø 15,7 (0.618)	0,86 (1.896)
1¼"	117,3 (4.618)	15,7 (0.618)	63,5 (2.5)	88,9 (3.5)	4 x ø 15,7 (0.618)	1,17 (2.579)
1½"	127 (5)	17,5 (0.689)	73,2 (2.882)	98,6 (3.882)	4 x ø 15,7 (0.618)	1,53 (3.373)
2"	152,4 (6)	19,1 (0.752)	91,9 (3.618)	120,7 (4.752)	4 x ø 19,1 (0.752)	2,42 (5.335)
2½"	177,8 (7)	22,4 (0.882)	104,6 (4.118)	139,7 (5.5)	4 x ø 19,1 (0.752)	3,94 (8.686)
3"	190,5 (7.5)	23,9 (0.941)	127 (5)	152,4 (6)	4 x ø 19,1 (0.752)	4,93 (10.87)
3½"	215,9 (8.5)	23,9 (0.941)	139,7 (5.5)	177,8 (7)	8 x ø 19,1 (0.752)	6,17 (13.6)
4"	228,6 (9)	23,9 (0.941)	157,2 (6.189)	190,5 (7.5)	8 x ø 19,1 (0.752)	7 (15.43)
5"	254 (10)	23,9 (0.941)	185,7 (7.311)	215,9 (8.5)	8 x ø 22,4 (0.882)	8,63 (19.03)
6"	279,4 (11)	25,4 (1)	215,9 (8.5)	241,3 (9.5)	8 x ø 22,4 (0.882)	11,3 (24.91)
8"	342,9 (13.5)	28,4 (1.118)	269,7 (10.62)	298,5 (11.75)	8 x ø 22,4 (0.882)	19,6 (43.21)
10"	406,4 (16)	30,2 (1.189)	323,8 (12.75)	362 (14.25)	12 x ø 25,4 (1)	28,8 (63.49)

Tab. 12: Afmetingen: ASME-flens Class 150. Alle afstandswaarden in millimeter (in).

Class 300

DN	D	b	d	K	L	~ kg
1"	124 (4.882)	17,5 (0.689)	50,8 (2)	88,9 (3.5)	4 x ø 19,1 (0.752)	1,39 (3.064)
1¼"	133,4 (5.252)	19,1 (0.752)	63,5 (2.5)	98,6 (3.882)	4 x ø 19,1 (0.752)	1,79 (3.946)
1½"	155,4 (6.118)	20,6 (0.811)	73,2 (2.882)	114,3 (4.5)	4 x ø 22,4 (0.882)	2,66 (5.864)
2"	165,1 (6.5)	22,4 (0.882)	91,9 (3.618)	127 (5)	8 x ø 19,1 (0.752)	3,18 (7.011)
2½"	190,5 (7.5)	25,4 (1)	104,6 (4.118)	149,4 (5.882)	8 x ø 22,4 (0.882)	4,85 (10.69)
3"	209,5 (8.248)	28,4 (1.118)	127 (5)	168,1 (6.618)	8 x ø 22,4 (0.882)	6,81 (15.01)
3½"	228,6 (9)	30,2 (1.189)	139,7 (5.5)	184,2 (7.252)	8 x ø 22,4 (0.882)	8,71 (19.2)
4"	254 (10)	31,8 (1.252)	157,2 (6.189)	200,2 (7.882)	8 x ø 22,4 (0.882)	11,5 (25.35)
5"	279,4 (11)	35,1 (1.382)	185,7 (7.311)	235 (9.252)	8 x ø 22,4 (0.882)	15,6 (34.39)
6"	317,5 (12.5)	36,6 (1.441)	215,9 (8.5)	269,7 (10.62)	12 x ø 22,4 (0.882)	20,9 (46.08)
8"	381 (15)	41,1 (1.618)	269,7 (10.62)	330,2 (13)	12 x ø 25,4 (1)	34,3 (75.62)
10"	444,5 (17.5)	47,8 (1.882)	323,8 (12.75)	387,4 (15.25)	16 x ø 28,4 (1.118)	53,3 (117.5)

Tab. 13: Afmetingen:- ASME-flens Class 300. Alle afstandswaarden in millimeter (in).

Class 600

DN	D	b	d	K	L	~ kg
1"	124 (4.882)	17,5 (0.689)	50,8 (2)	88,9 (3.5)	4 x ø 19,1 (0.752)	1,6 (3.527)
1¼"	133,4 (5.252)	20,6 (0.811)	63,5 (2.5)	98,6 (3.882)	4 x ø 19,1 (0.752)	2,23 (4.916)
1½"	155,4 (6.118)	22,4 (0.882)	73,2 (2.882)	114,3 (4.5)	4 x ø 22,4 (0.882)	3,25 (7.165)
2"	165,1 (6.5)	25,4 (1)	91,9 (3.618)	127 (5)	8 x ø 19,1 (0.752)	4,15 (9.15)
2½"	190,5 (7.5)	28,4 (1.118)	104,6 (4.118)	149,4 (5.882)	8 x ø 22,4 (0.882)	6,13 (13.51)
3"	209,6 (8.252)	31,8 (1.252)	127 (5)	168,1 (6.618)	8 x ø 22,4 (0.882)	8,44 (18.61)
3½"	228,6 (9)	35,1 (1.382)	139,7 (5.5)	184,2 (7.252)	8 x ø 25,4 (1)	11 (24.25)
4"	273,1 (10.75)	38,1 (1.5)	157,2 (6.189)	215,9 (8.5)	8 x ø 25,4 (1)	17,3 (38.14)
5"	330,2 (13)	44,5 (1.752)	185,7 (7.311)	266,7 (10.5)	8 x ø 28,4 (1.118)	29,4 (64.82)

DN	D	b	d	K	L	~ kg
6"	355,6 (14)	47,8 (1.882)	215,9 (8.5)	292,1 (11.5)	12 x ø 28,4 (1.118)	36,1 (79.59)
8"	419,1 (16.5)	55,6 (2.189)	269,7 (10.62)	349,3 (13.75)	12 x ø 31,8 (1.252)	58,9 (129.9)
10"	508 (20)	63,5 (2.5)	323,8 (12.75)	431,8 (17)	16 x ø 35,1 (1.382)	97,5 (215)

Tab. 14: Afmetingen: ASME-flens Class 600. Alle afstandswaarden in millimeter (in).

Class 900

DN	D	b	d	K	L	~ kg
1"	149,4 (5.882)	28,4 (1.118)	50,8 (2)	101,6 (4)	4 x ø 25,4 (1)	3,57 (7.871)
1¼"	158,8 (6.252)	28,4 (1.118)	63,5 (2.5)	111,3 (4.382)	4 x ø 25,4 (1)	4,14 (9.127)
1½"	177,8 (7)	31,8 (1.252)	73,2 (2.882)	124 (4.882)	4 x ø 28,4 (1.118)	5,75 (12.68)
2"	215,9 (8.5)	38,1 (1.5)	91,9 (3.618)	165,1 (6.5)	8 x ø 25,4 (1)	10,1 (22.27)
2½"	244,4 (9.622)	41,1 (1.618)	104,6 (4.118)	190,5 (7.5)	8 x ø 28,4 (1.118)	14 (30.86)
3"	241,3 (9.5)	38,1 (1.5)	127 (5)	190,5 (7.5)	8 x ø 25,4 (1)	13,1 (28.9)
4"	292,1 (11.5)	44,5 (1.752)	157,2 (6.189)	235 (9.252)	8 x ø 31,8 (1.252)	26,9 (59.3)
5"	349,3 (13.75)	50,8 (2)	185,7 (7.311)	279,4 (11)	8 x ø 35,1 (1.382)	36,5 (80.47)
6"	381 (15)	55,6 (2.189)	215,9 (8.5)	317,5 (12.5)	12 x ø 31,8 (1.252)	47,4 (104.5)
8"	469,9 (18.5)	63,5 (2.5)	269,7 (10.62)	393,7 (15.5)	12 x ø 38,1 (1.5)	82,5 (181.9)
10"	546,1 (21.5)	69,9 (2.752)	323,8 (12.75)	469,9 (18.5)	16 x ø 38,1 (1.5)	122 (269)

Tab. 15: Afmetingen: ASME-flens Class 900. Alle afstandswaarden in millimeter (in).

Class 1500

DN	D	b	d	K	L	~ kg
1"	149,4 (5.882)	28,4 (1.118)	50,8 (2)	101,6 (4)	4 x ø 25,4 (1)	3,57 (7.871)
1¼"	158,8 (6.252)	28,4 (1.118)	63,5 (2.5)	111,3 (4.382)	4 x ø 25,4 (1)	4,14 (9.127)
1½"	177,8 (7)	31,8 (1.252)	73,2 (2.882)	124 (4.882)	4 x ø 28,4 (1.118)	5,75 (12.68)
2"	215,9 (8.5)	38,1 (1.5)	91,9 (3.618)	165,1 (6.5)	8 x ø 25,4 (1)	10,1 (22.27)
2½"	244,4 (9.622)	41,1 (1.618)	104,6 (4.118)	190,5 (7.5)	8 x ø 28,4 (1.118)	14 (30.87)
3"	266,7 (10.5)	47,8 (1.882)	127 (5)	203,2 (8)	8 x ø 31,8 (1.252)	19,1 (42.11)
4"	311,2 (12.25)	53,8 (2.118)	157,2 (6.189)	241,3 (9.5)	8 x ø 35,1 (1.382)	29,9 (65.92)

DN	D	b	d	K	L	~ kg
5"	374,7 (14.75)	73,2 (2.882)	185,7 (7.311)	292,1 (11.5)	8 x ø 41,1 (1.618)	58,4 (128.8)
6"	393,7 (15.5)	82,6 (3.252)	215,9 (8.5)	317,5 (12.5)	12 x ø 38,1 (1.5)	71,8 (158.3)
8"	482,6 (19)	91,9 (3.618)	269,7 (10.62)	393,7 (15.5)	12 x ø 44,5 (1.752)	122 (269)
10"	584,2 (23)	108 (4.252)	323,8 (12.75)	482,6 (19)	16 x ø 50,8 (2)	210 (463)

Tab. 16: Afmetingen: ASME-flens Class 1500. Alle afstandswaarden in millimeter (in).

Class 2500

DN	D	b	d	K	L	~ kg
1"	158,8 (6.252)	35,1 (1.382)	50,8 (2)	108 (4.252)	4 x ø 25,4 (1)	4,96 (10.94)
1¼"	184,2 (7.252)	38,1 (1.5)	63,5 (2.5)	130 (5.118)	4 x ø 28,4 (1.118)	7,35 (16.2)
1½"	203,2 (8)	44,5 (1.752)	73,2 (2.882)	146,1 (5.752)	4 x ø 31,8 (1.252)	10,4 (22.93)
2"	235 (9.252)	50,8 (2)	91,9 (3.618)	171,5 (6.752)	8 x ø 28,4 (1.118)	15,6 (34.39)
2½"	266,7 (10.5)	57,2 (2.252)	104,6 (4.118)	196,9 (7.752)	8 x ø 31,8 (1.252)	22,6 (49.82)
3"	304,8 (12)	66,5 (2.618)	127 (5)	228,6 (9)	8 x ø 35,1 (1.382)	34,8 (76.72)
4"	355,6 (14)	76,2 (3)	157,2 (6.189)	273,1 (10.75)	8 x ø 41,1 (1.618)	53,9 (118.8)
5"	419,1 (16.5)	91,9 (3.618)	185,7 (7.311)	323,8 (12.75)	8 x ø 47,8 (1.882)	90,8 (200.2)
6"	482,6 (19)	108 (4.252)	215,9 (8.5)	368,3 (14.5)	12 x ø 53,8 (2.118)	141 (310.9)
8"	552,5 (21.75)	127 (5)	269,7 (10.62)	438,2 (17.25)	12 x ø 53,8 (2.118)	214 (471.8)
10"	673,1 (26.5)	165,1 (6.5)	323,8 (12.75)	539,8 (21.25)	12 x ø 66,5 (2.618)	411 (906.1)

Tab. 17: Afmetingen: ASME-flens Class 2500. Alle afstandswaarden in millimeter (in).

2.4 JIS-flens (B 2210-1984)

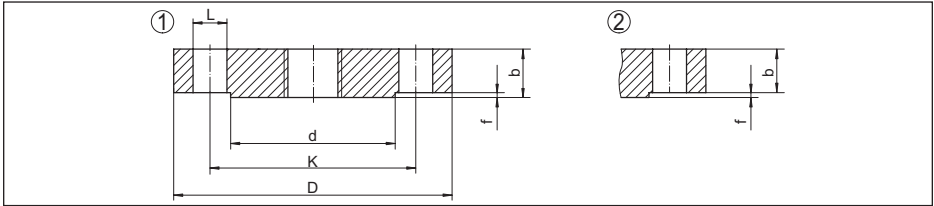


Fig. 4: Afmetingen: JIS-flens (Regular Flange)

- L Boringdiameter (aantal boringen)
 d Diameter van de raised face
 K Hartafstand
 D Flensdiameter
 b Totale dikte van de flens
 f Hoogte raised face

10 K

DN	D	b	K	d	f	L
25 (0.984)	125 (4.921)	14 (0.551)	90 (3.543)	67 (2.638)	1 (0.039)	4 x \varnothing 19 (0.748)
32 (1.26)	135 (5.315)	16 (0.63)	100 (3.937)	76 (2.992)	2 (0.079)	4 x \varnothing 19 (0.748)
40 (1.575)	140 (5.512)	16 (0.63)	105 (4.134)	81 (3.189)	2 (0.079)	4 x \varnothing 19 (0.748)
50 (1.969)	155 (6.102)	16 (0.63)	120 (4.724)	96 (3.78)	2 (0.079)	4 x \varnothing 19 (0.748)
65 (2.56)	175 (6.89)	18 (0.709)	140 (5.512)	116 (4.567)	2 (0.079)	4 x \varnothing 19 (0.748)
80 (3.15)	185 (7.284)	18 (0.709)	150 (5.906)	126 (4.961)	2 (0.079)	8 x \varnothing 19 (0.748)
100 (3.937)	210 (8.268)	18 (0.709)	175 (6.9)	151 (5.945)	2 (0.079)	8 x \varnothing 19 (0.748)
125 (4.921)	250 (9.843)	20 (0.787)	210 (8.268)	182 (7.165)	2 (0.079)	8 x \varnothing 23 (0.906)
150 (5.906)	280 (11.02)	22 (0.866)	240 (9.449)	212 (8.347)	2 (0.079)	8 x \varnothing 23 (0.906)
200 (7.874)	330 (12.99)	22 (0.866)	290 (11.42)	262 (10.32)	2 (0.079)	12 x \varnothing 23 (0.906)
250 (9.843)	400 (15.75)	24 (0.945)	355 (13.98)	324 (12.76)	2 (0.079)	12 x \varnothing 25 (0.984)
300 (11.81)	445 (17.52)	24 (0.945)	400 (15.75)	368 (14.49)	3 (0.118)	16 x \varnothing 25 (0.984)

Tab. 18: Afmetingen: JIS-flens 10 K (B 2210-1984) Regular Flange. Alle afstandswaarden in millimeter (in).

2.5 GOST-flens (GOST 12815-80)

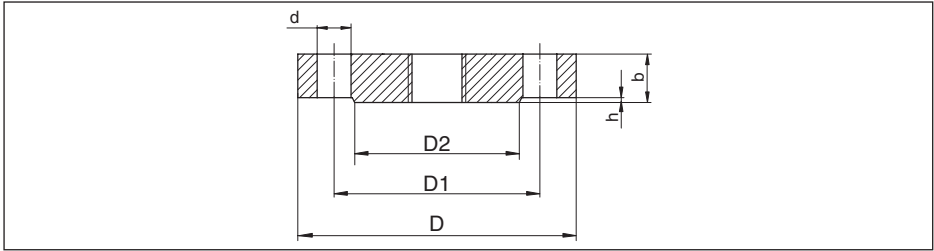


Fig. 5: Afmetingen: GOST-flens (GOST 12815-80, Modification 1)

- d* Boringdiameter (aantal boringen)
- D2* Diameter van de raised face
- D1* Hartafstand
- D* Flensdiameter
- b* Totale dikte van de flens
- h* Hoogte raised face

PN 16

DN	D	D1	D2	b	h	d
25 (0.984)	115 (4.528)	85 (3.347)	68 (2.677)	12 (0.472)	2 (0.079)	4 x ø 14 (0.551)
32 (1.26)	135 (5.315)	100 (3.937)	78 (3.071)	13 (0.512)	2 (0.079)	4 x ø 18 (0.709)
40 (1.575)	145 (5.709)	110 (4.331)	88 (3.465)	13 (0.512)	3 (0.118)	4 x ø 18 (0.709)
50 (1.969)	160 (6.299)	125 (4.921)	102 (4.016)	13 (0.512)	3 (0.118)	4 x ø 18 (0.709)
65 (2.56)	180 (7.087)	145 (5.709)	122 (4.803)	15 (0.591)	3 (0.118)	4 x ø 18 (0.709)
80 (3.15)	195 (7.677)	160 (6.299)	133 (5.236)	17 (0.669)	3 (0.118)	8 x ø 18 (0.709)
100 (3.937)	215 (8.465)	180 (7.087)	158 (6.221)	17 (0.669)	3 (0.118)	8 x ø 18 (0.709)
125 (4.921)	245 (9.646)	210 (8.268)	184 (7.244)	19 (0.748)	3 (0.118)	8 x ø 18 (0.709)
150 (5.906)	280 (11.02)	240 (9.449)	212 (8.347)	19 (0.748)	3 (0.118)	8 x ø 22 (0.866)
200 (7.874)	335 (13.19)	295 (11.61)	268 (10.55)	21 (0.827)	3 (0.118)	12 x ø 22 (0.866)
250 (9.843)	405 (15.95)	355 (13.98)	320 (12.6)	23 (0.906)	3 (0.118)	12 x ø 26 (1.024)

Tab. 19: Afmetingen: GOST-flens PN 16. Alle afstandswaarden in millimeter (in).

PN 25

DN	D	D1	D2	b	h	d
25 (0.984)	115 (4.528)	85 (3.347)	68 (2.677)	14 (0.551)	2 (0.079)	4 x ø 14 (0.551)
32 (1.26)	135 (5.315)	100 (3.937)	78 (3.071)	16 (0.63)	2 (0.079)	4 x ø 18 (0.709)
40 (1.575)	145 (5.709)	110 (4.331)	88 (3.465)	16 (0.63)	3 (0.118)	4 x ø 18 (0.709)
50 (1.969)	160 (6.299)	125 (4.921)	102 (4.016)	17 (0.669)	3 (0.118)	4 x ø 18 (0.709)
65 (2.559)	180 (7.087)	145 (5.709)	122 (4.803)	19 (0.748)	3 (0.118)	8 x ø 18 (0.709)
80 (3.15)	195 (7.677)	160 (6.299)	133 (5.236)	19 (0.748)	3 (0.118)	8 x ø 18 (0.709)
100 (3.937)	230 (9.055)	190 (7.48)	158 (6.221)	21 (0.827)	3 (0.118)	8 x ø 22 (0.866)
125 (4.921)	270 (10.63)	220 (8.661)	184 (7.244)	23 (0.906)	3 (0.118)	8 x ø 26 (1.024)
150 (5.906)	300 (11.81)	250 (9.843)	212 (8.347)	25 (0.984)	3 (0.118)	8 x ø 26 (1.024)
200 (7.874)	360 (14.17)	310 (12.21)	278 (10.95)	27 (1.063)	3 (0.118)	12 x ø 26 (1.024)
250 (9.843)	425 (16.73)	370 (14.57)	335 (13.19)	29 (1.142)	3 (0.118)	12 x ø 30 (1.181)

Tab. 20: Afmetingen: GOST-flens PN 25. Alle afstandswaarden in millimeter (in).

PN 40

DN	D	D1	D2	b	h	d
25 (0.984)	115 (4.528)	85 (3.347)	68 (2.677)	14 (0.551)	2 (0.079)	4 x ø 14 (0.551)
32 (1.26)	135 (5.315)	100 (3.937)	78 (3.071)	16 (0.63)	2 (0.079)	4 x ø 18 (0.709)
40 (1.575)	145 (5.709)	110 (4.331)	88 (3.465)	16 (0.63)	3 (0.118)	4 x ø 18 (0.709)
50 (1.969)	160 (6.3)	125 (4.921)	102 (4.016)	17 (0.669)	3 (0.118)	4 x ø 18 (0.709)
65 (2.559)	180 (7.087)	145 (5.709)	122 (4.803)	19 (0.748)	3 (0.118)	8 x ø 18 (0.709)
80 (3.15)	195 (7.677)	160 (6.299)	133 (5.236)	21 (0.827)	3 (0.118)	8 x ø 18 (0.709)
100 (3.937)	230 (9.055)	190 (7.480)	158 (6.221)	23 (0.906)	3 (0.118)	8 x ø 22 (0.866)
125 (4.921)	270 (10.63)	220 (8.661)	184 (7.244)	25 (0.984)	3 (0.118)	8 x ø 26 (1.024)
150 (5.906)	300 (11.81)	250 (9.843)	212 (8.347)	27 (1.063)	3 (0.118)	8 x ø 26 (1.024)

DN	D	D1	D2	b	h	d
200 (7.874)	375 (14.76)	320 (12.6)	285 (11.22)	35 (1.378)	3 (0.118)	12 x ø 30 (1.181)
250 (9.843)	445 (17.52)	385 (15.16)	345 (13.58)	39 (1.535)	3 (0.118)	12 x ø 33 (1.299)

Tab. 21: Afmetingen: GOST-flens PN 40. Alle afstandswaarden in millimeter (in).

PN 63

DN	D	D1	D2	b	h	d
25 (0.984)	135 (5.315)	100 (3.937)	68 (2.677)	20 (0.787)	2 (0.079)	4 x ø 18 (0.709)
32 (1.26)	150 (5.906)	110 (4.331)	78 (3.071)	21 (0.827)	2 (0.079)	4 x ø 22 (0.866)
40 (1.575)	165 (6.496)	125 (4.921)	88 (3.465)	21 (0.827)	3 (0.118)	4 x ø 22 (0.866)
50 (1.969)	175 (6.89)	135 (5.315)	102 (4.016)	23 (0.906)	3 (0.118)	4 x ø 22 (0.866)
65 (2.559)	200 (7.874)	160 (6.299)	122 (4.803)	25 (0.984)	3 (0.118)	8 x ø 22 (0.866)
80 (3.15)	210 (8.268)	170 (6.693)	133 (5.236)	27 (1.063)	3 (0.118)	8 x ø 22 (0.866)
100 (3.937)	250 (9.843)	200 (7.874)	158 (6.221)	29 (1.142)	3 (0.118)	8 x ø 26 (1.024)
125 (4.921)	295 (11.61)	240 (9.449)	184 (7.244)	33 (1.3)	3 (0.118)	8 x ø 30 (1.181)
150 (5.906)	340 (13.39)	280 (11.02)	212 (8.347)	35 (1.378)	3 (0.118)	8 x ø 33 (1.299)
200 (7.874)	405 (15.95)	345 (13.58)	285 (11.22)	41 (1.614)	3 (0.118)	12 x ø 36 (1.417)
250 (9.843)	470 (18.5)	400 (15.75)	345 (13.58)	45 (1.772)	3 (0.118)	12 x ø 36 (1.417)

Tab. 22: Afmetingen: GOST-flens PN 63. Alle afstandswaarden in millimeter (in).

PN 100

DN	D	D1	D2	b	h	d
25 (0.984)	135 (5.315)	100 (3.937)	68 (2.677)	22 (0.866)	2 (0.079)	4 x ø 18 (0.709)
32 (1.26)	150 (5.906)	110 (4.331)	78 (3.071)	22 (0.866)	2 (0.079)	4 x ø 22 (0.866)
40 (1.575)	165 (6.496)	125 (4.921)	88 (3.465)	23 (0.906)	3 (0.118)	4 x ø 22 (0.866)
50 (1.969)	195 (7.677)	145 (5.709)	102 (4.016)	25 (0.984)	3 (0.118)	4 x ø 26 (1.024)
65 (2.56)	220 (8.661)	170 (6.693)	122 (4.803)	29 (1.142)	3 (0.118)	8 x ø 26 (1.024)

31088-NL-191021

DN	D	D1	D2	b	h	d
80 (3.15)	230 (9.055)	180 (7.087)	133 (5.236)	31 (1.221)	3 (0.118)	8 x ø 26 (1.024)
100 (3.937)	265 (10.43)	210 (8.268)	158 (6.221)	35 (1.378)	3 (0.118)	8 x ø 30 (1.181)
125 (4.921)	310 (12.21)	250 (9.843)	184 (7.244)	39 (1.535)	3 (0.118)	8 x ø 33 (1.299)
150 (5.906)	350 (13.78)	290 (11.42)	212 (8.347)	43 (1.693)	3 (0.118)	12 x ø 33 (1.299)
200 (7.874)	430 (16.93)	360 (14.17)	285 (11.22)	51 (2.008)	3 (0.118)	12 x ø 36 (1.417)
250 (9.843)	500 (19.69)	430 (16.93)	345 (13.58)	57 (2.244)	3 (0.118)	12 x ø 39 (1.535)

Tab. 23: Afmetingen: GOST-flens PN 100. Alle afstandswaarden in millimeter (in).

3 Druk-temperatuur tabellen

3.1 Druk-temperatuur tabel - EN-flens

De waarden zijn gerelateerd aan flenzen van materiaal 316/316L.

PN	16	25	40	63	100
RT	16 (232.1)	25 (362.6)	40 (580.2)	63 (913.7)	100 (1450.4)
50 °C (122 °F)	16 (232.1)	25 (362.6)	40 (580.2)	63 (913.7)	100 (1450.4)
100 °C (212 °F)	16 (232.1)	25 (362.6)	40 (580.2)	63 (913.7)	100 (1450.4)
150 °C (302 °F)	14,5 (210.3)	22,7 (329.2)	36,3 (526.5)	57,3 (831.1)	90,9 (1318.4)
200 °C (392 °F)	13,4 (194.4)	21 (304.6)	33,7 (488.8)	53,1 (670.1)	84,2 (1221.2)
250 °C (482 °F)	12,7 (184.2)	19,8 (287.2)	31,8 (461.2)	50,1 (770.2)	79,5 (1153.1)
300 °C (572 °F)	11,8 (171.1)	18,5 (268.3)	29,7 (430.8)	46,8 (678.8)	74,2 (1076.2)
350 °C (662 °F)	11,4 (165.3)	17,8 (258.2)	28,5 (413.4)	45 (652.7)	71,4 (1035.6)
400 °C (752 °F)	10,9 (158.1)	17,1 (248)	27,4 (397.4)	43,2 (626.6)	68,5 (993.6)
450 °C (842 °F)	10,7 (155.2)	16,8 (243.7)	26,9 (390.2)	42,4 (615)	67,3 (976.1)

Tab. 24: Druk-temperatuur tabel - EN-flens. Alle specificaties in bar (psig).

RT Temperatuurbereik -10 ... +50 °C

3.2 Druk-temperatuur tabel - ASME-flens

De waarden zijn gerelateerd aan flenzen van materiaal 316/316L.

Class	150	300	400	600	900	1500	2500
RT	19 (275.6)	49,6 (719.4)	66,2 (960.1)	99,3 (1440.2)	148,9 (2159.6)	248,2 (3599.8)	413,7 (6000.2)
50 °C (122 °F)	18,4 (266.9)	48,1 (697.6)	64,2 (931.1)	96,2 (1395.3)	144,3 (2092.9)	240,6 (3489.6)	400,9 (5814.6)
100 °C (212 °F)	16,2 (235)	42,2 (612.1)	56,3 (816.6)	84,4 (1224.1)	126,6 (1836.2)	211 (3060.3)	351,6 (5099.5)
150 °C (302 °F)	14,8 (214.7)	38,5 (558.4)	51,3 (744)	77 (1116.8)	115,5 (1675.2)	192,5 (2792)	320,8 (4652.8)
200 °C (392 °F)	13,7 (198.7)	35,7 (517.8)	47,6 (690.4)	71,3 (1034.1)	107 (1551.9)	178,3 (2586)	297,2 (4310.5)
250 °C (482 °F)	12,1 (175.5)	33,4 (484.4)	44,5 (645.4)	66,8 (968.9)	101,1 (1466.3)	166,9 (2420.7)	278,1 (4033.5)
300 °C (572 °F)	10,2 (147.9)	31,6 (458.3)	42,2 (612.1)	63,2 (916.6)	94,9 (1376.4)	158,1 (2293)	263,5 (3821.7)
325 °C (617 °F)	9,3 (134.9)	30,9 (448.2)	41,2 (597.6)	61,8 (896.3)	92,7 (1344.5)	154,4 (2239.4)	257,4 (3733.3)
350 °C (662 °F)	8,4 (121.8)	30,3 (439.5)	40,4 (586)	60,7 (867.3)	91 (1319.8)	151,6 (2198.8)	252,7 (3665.1)
375 °C (707 °F)	7,4 (107.3)	29,9 (433.7)	39,8 (577.3)	59,8 (867.3)	89,6 (1299.5)	149,4 (2166.9)	249 (3611.4)

Class	150	300	400	600	900	1500	2500
400 °C (752 °F)	6,5 (94.3)	29,4 (426.4)	39,3 (570)	58,9 (854.3)	88,3 (1280.7)	147,2 (2135)	245,3 (3557.8)
425 °C (797 °F)	5,5 (79,8)	29,1 (422.1)	38,9 (564.2)	58,3 (845.6)	87,4 (1267.6)	145,7 (2113.2)	242,9 (3523)
450 °C (842 °F)	4,6 (66,7)	28,8 (417.7)	38,5 (558.4)	57,7 (836.9)	86,5 (1254.6)	144,2 (2091.4)	240,4 (3486.7)

Tab. 25: Druk-temperatuur tabel - ASME-flens. Alle specificaties in bar (psig).

RT Temperatuurbereik -29 ... +38 °C

3.3 Druk-temperatuurtabel - GOST-flens

De waarden zijn gerelateerd aan flenzen van materiaal 316L.

PN 25

Temperatuur	250 °C (482 °F)	300 °C (572 °F)	350 °C (662 °F)	400 °C (752 °F)
DN 100	25 (362.6)	25 (362.6)	25 (362.6)	25 (362.6)
DN 125	25 (362.6)	25 (362.6)	25 (362.6)	25 (362.6)
DN 150	25 (362.6)	39,4 (571.5)	25 (362.6)	25 (362.6)
DN 200	25 (362.6)	25 (362.6)	25 (362.6)	25 (362.6)
DN 250	25 (362.6)	25 (362.6)	25 (362.6)	24,9 (361.1)

Tab. 26: Druk-temperatuur tabel - GOST-flens PN25. Alle specificaties in bar (psig).

PN 40

Temperatuur	250 °C (482 °F)	300 °C (572 °F)	350 °C (662 °F)	400 °C (752 °F)
DN 100	40 (580.2)	40 (580.2)	40 (580.2)	39,5 (572.9)
DN 125	40 (580.2)	40 (580.2)	39,5 (572.9)	38,4 (557)
DN 150	40 (580.2)	39,4 (571.5)	37,7 (546.8)	36,7 (532.3)
DN 200	40 (580.2)	40 (580.2)	40 (580.2)	40 (580.2)
DN 250	39,2 (568.6)	37,2 (539.5)	35,7 (517.8)	34,6 (501.8)

Tab. 27: Druk-temperatuur tabel - GOST-flens PN40. Alle specificaties in bar (psig).

PN 63

Temperatuur	250 °C (482 °F)	300 °C (572 °F)	350 °C (662 °F)	400 °C (752 °F)
DN 100	63 (913.7)	63 (913.7)	63 (913.7)	63 (913.7)
DN 125	63 (913.7)	63 (913.7)	63 (913.7)	63 (913.7)
DN 150	63 (913.7)	63 (913.7)	63 (913.7)	62,5 (906.5)
DN 200	63 (913.7)	63 (913.7)	60,7 (880.4)	59 (855.7)
DN 250	63 (913.7)	60,3 (874.6)	57,8 (838.3)	56,2 (815.1)

Tab. 28: Druk-temperatuur tabel - GOST-flens PN63. Alle specificaties in bar (psig).

PN 100

Temperatuur	250 °C (482 °F)	300 °C (572 °F)	350 °C (662 °F)	400 °C (752 °F)
DN 100	100 (1450)	100 (1450)	100 (1450)	98 (1421)
DN 125	100 (1450)	100 (1450)	97,8 (1419)	94,9 (1376.4)
DN 150	99,7 (1446)	94,5 (1371)	90,6 (1314)	88 (1276)
DN 200	100 (1450)	96,6 (1401)	92,6 (1343)	90 (1305)
DN 250	94,3 (1368)	89,4 (1297)	85,7 (1243)	83,2 (1207)

Tab. 29: Druk-temperatuur tabel - GOST-flens PN100. Alle specificaties in bar (psig).

PN 160

Temperatuur	100 °C (212 °F)	150 °C (302 °F)	200 °C (392 °F)	250 °C (482 °F)	300 °C (572 °F)	350 °C (662 °F)	400 °C (752 °F)
DN 50	160 (2321)	160 (2321)	153,5 (2226)	142,3 (2064)	134,9 (1957)	129,3 (1875)	125,6 (1822)
DN 65	160 (2321)	160 (2321)	152,8 (2216)	141,7 (2055)	134,2 (1946)	128,7 (1867)	125 (1813)
DN 80	160 (2321)	160 (2321)	154,6 (2242)	143,4 (2080)	135,9 (1971)	130,3 (1890)	125,6 (1822)
DN 100	160 (2321)	146,2 (2121)	134 (1944)	124,3 (1803)	117,8 (1709)	112,9 (1638)	109,7 (1591)
DN 125	155 (2248)	140,2 (2033)	128,5 (1864)	119,2 (1729)	112,9 (1638)	108,3 (1571)	105,1 (1524)
DN 150	160 (2321)	151 (2190)	138,4 (2007)	128,3 (1861)	121,6 (1764)	116,6 (1691)	113,2 (1642)
DN 200	160 (2321)	150,6 (2184)	138 (2002)	128 (1857)	121,3 (1759)	116,3 (1687)	112,9 (1638)
DN 250	157,8 (2289)	142,7 (2070)	130,8 (1897)	121,3 (1759)	115 (1668)	110,2 (1598)	107 (1552)

Tab. 30: Druk-temperatuur tabel - GOST-flens PN160. Alle specificaties in bar (psig).

Printing date:

VEGA

De gegevens omtrent leveromvang, toepassing, gebruik en bedrijfsomstandigheden van de sensoren en weergavesystemen geeft de stand van zaken weer op het moment van drukken.

Wijzigingen voorbehouden

© VEGA Grieshaber KG, Schiltach/Germany 2019



31088-NL-191021

VEGA Grieshaber KG
Am Hohenstein 113
77761 Schiltach
Germany

Phone +49 7836 50-0
Fax +49 7836 50-201
E-mail: info.de@vega.com
www.vega.com