

## Supplementary instructions

### Flanges according to DIN - EN - ASME - JIS - GOST

Technical data



Document ID: 31088



**VEGA**

## Contents

<b>1</b>	<b>Product description</b> .....	<b>3</b>
1.1	Specifications .....	3
<b>2</b>	<b>Dimensions</b> .....	<b>4</b>
2.1	DIN flanges (DIN 2501) .....	4
2.2	EN flanges (EN 1092-1) .....	8
2.3	ASME flanges (ASME B 16.5) .....	12
2.4	JIS flanges (B 2210-1984) .....	16
2.5	GOST flanges (GOST 12815-80) .....	17
<b>3</b>	<b>Pressure-Temperature-Charts</b> .....	<b>21</b>
3.1	Pressure-Temperature-Table - EN flanges .....	21
3.2	Pressure-Temperature-Table - ASME flanges .....	21
3.3	Pressure-Temperature-Table - GOST flanges .....	22

# 1 Product description

## 1.1 Specifications

The described flanges are threaded flanges with seal ledge and are available with G1 or G1½ (ISO 228 T1) inner thread.

The information in these supplementary instructions refers to flanges made of material 316/316L. The material 316 corresponds to 1.4401, the material 316L corresponds to 1.4404. Other materials on request.

All distance values in mm.

The flanges are available in different versions according to the following standards:

**DIN:** German National Standards Institute (DIN 2501)

**EN:** European Standard (EN 1092-1)

**ASME:** American Society of Mechanical Engineers (ASME B 16.5)

**JIS:** Japanese Industrial Standard (B 2210-1984)

**GOST:** Federal agency for technical control and metrology - Russia (12821-80)

## 2 Dimensions

### 2.1 DIN flanges (DIN 2501)

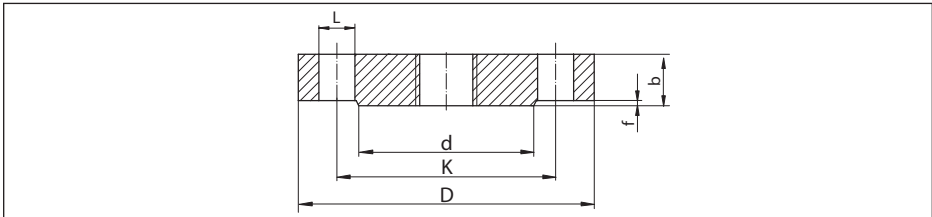


Fig. 1: Dimensions: DIN flange DIN 2501 (seal ledge DIN 2526 Form C)

- $L$  Diameter of holes (number of holes)
- $d$  Seal ledge diameter
- $K$  Diameter of hole circle
- $D$  Flange diameter
- $b$  Total flange thickness
- $f$  Seal ledge height

#### PN 10

DN	D	b	K	d	f	L	~ kg
25 (0.984)	115 (4.528)	16 (0.63)	85 (3.347)	68 (2.677)	2 (0.079)	4 x $\varnothing$ 14 (0.551)	1.23 (2.712)
32 (1.26)	140 (5.512)	16 (0.63)	100 (3.937)	78 (3.071)	2 (0.079)	4 x $\varnothing$ 18 (0.709)	1.8 (3.968)
40 (1.575)	150 (5.906)	16 (0.63)	110 (4.331)	88 (3.465)	3 (0.118)	4 x $\varnothing$ 18 (0.709)	2.09 (4.608)
50 (1.969)	165 (6.496)	18 (0.709)	125 (4.921)	102 (4.016)	3 (0.118)	4 x $\varnothing$ 18 (0.709)	2.88 (6.349)
65 (2.56)	185 (7.284)	18 (0.709)	145 (5.709)	122 (4.803)	3 (0.118)	4 x $\varnothing$ 18 (0.709)	3.66 (8.069)
80 (3.15)	200 (7.874)	20 (0.787)	160 (6.3)	138 (5.433)	3 (0.118)	8 x $\varnothing$ 18 (0.709)	4.83 (10.65)
100 (3.937)	220 (8.661)	20 (0.787)	180 (7.087)	158 (6.221)	3 (0.118)	8 x $\varnothing$ 18 (0.709)	5.75 (12.68)
125 (4.921)	250 (9.843)	22 (0.866)	210 (8.268)	188 (7.402)	3 (0.118)	8 x $\varnothing$ 18 (0.709)	8.59 (18.94)
150 (5.906)	285 (11.22)	22 (0.866)	240 (9.449)	212 (8.347)	3 (0.118)	8 x $\varnothing$ 22 (0.866)	10.6 (23.37)
175 (6.89)	316 (12.44)	24 (0.945)	270 (10.63)	242 (9.528)	3 (0.118)	8 x $\varnothing$ 22 (0.866)	14.3 (31.53)
200 (7.874)	340 (13.39)	24 (0.945)	295 (11.61)	268 (10.55)	3 (0.118)	8 x $\varnothing$ 22 (0.866)	16.9 (37.26)
250 (9.843)	395 (15.55)	26 (1.024)	350 (13.78)	320 (12.6)	3 (0.118)	12 x $\varnothing$ 22 (0.866)	24.7 (54.45)
300 (11.81)	445 (17.52)	26 (1.024)	400 (15.75)	370 (14.57)	4 (0.158)	12 x $\varnothing$ 22 (0.866)	31.9 (70.33)

Tab. 1: Dimensions: DIN flange PN 10. All distance values in mm (in)

**PN 16**

DN	D	b	K	d	f	L	~ kg
25 (0.984)	115 (4.528)	16 (0.63)	85 (3.346)	68 (2.677)	2 (0.079)	4 x ø 14 (0.551)	1.23 (2.712)
32 (1.26)	140 (5.512)	16 (0.63)	100 (3.937)	78 (3.071)	2 (0.079)	4 x ø 18 (0.709)	1.8 (3.968)
40 (1.575)	150 (5.906)	16 (0.63)	110 (4.331)	88 (3.465)	3 (0.118)	4 x ø 18 (0.709)	2.09 (4.608)
50 (1.969)	165 (6.496)	18 (0.709)	125 (4.921)	102 (4.016)	3 (0.118)	4 x ø 18 (0.709)	2.88 (6.349)
65 (2.559)	185 (7.283)	18 (0.709)	145 (5.709)	122 (4.803)	3 (0.118)	4 x ø 18 (0.709)	3.66 (8.069)
80 (3.15)	200 (7.874)	20 (0.787)	160 (6.299)	138 (5.433)	3 (0.118)	8 x ø 18 (0.709)	4.83 (10.65)
100 (3.937)	220 (8.661)	20 (0.787)	180 (7.087)	158 (6.220)	3 (0.118)	8 x ø 18 (0.709)	5.75 (12.68)
125 (4.921)	250 (9.843)	22 (0.866)	210 (8.268)	188 (7.402)	3 (0.118)	8 x ø 18 (0.709)	8.59 (18.94)
150 (5.906)	285 (11.22)	22 (0.866)	240 (9.449)	212 (8.346)	3 (0.118)	8 x ø 22 (0.866)	10.6 (23.37)
175 (6.89)	316 (12.44)	24 (0.945)	270 (10.63)	242 (9.528)	3 (0.118)	8 x ø 22 (0.866)	14.3 (31.53)
200 (7.874)	340 (13.39)	24 (0.945)	295 (11.61)	268 (10.55)	3 (0.118)	12 x ø 22 (0.866)	16.5 (36.38)
250 (9.843)	405 (15.95)	26 (1.024)	355 (13.98)	320 (12.6)	3 (0.118)	12 x ø 26 (1.024)	25.6 (56.44)
300 (11.81)	460 (18.11)	28 (1.102)	410 (16.14)	378 (14.88)	4 (0.157)	12 x ø 26 (1.024)	36.1 (79.59)

Tab. 2: Dimensions: DIN flange PN 16. All distance values in mm (in)

**PN 25**

DN	D	b	K	d	f	L	~ kg
25 (0.984)	115 (4.528)	18 (0.709)	85 (3.346)	68 (2.677)	2 (0.079)	4 x ø 14 (0.551)	1.38 (3.042)
32 (1.26)	140 (5.512)	18 (0.709)	100 (3.937)	78 (3.071)	2 (0.079)	4 x ø 18 (0.709)	2.03 (4.475)
40 (1.575)	150 (5.906)	18 (0.709)	110 (4.331)	88 (3.465)	3 (0.118)	4 x ø 18 (0.709)	2.35 (5.101)
50 (1.969)	165 (6.496)	20 (0.787)	125 (4.921)	102 (4.016)	3 (0.118)	4 x ø 18 (0.709)	3.2 (7.055)
65 (2.56)	185 (7.283)	22 (0.866)	145 (5.709)	122 (4.803)	3 (0.118)	8 x ø 18 (0.709)	4.33 (9.546)
80 (3.15)	200 (7.874)	24 (0.945)	160 (6.3)	138 (5.433)	3 (0.118)	8 x ø 18 (0.709)	5.94 (13.1)

DN	D	b	K	d	f	L	~ kg
100 (3.937)	235 (9.252)	24 (0.945)	190 (7.48)	162 (6.378)	3 (0.118)	8 x ø 22 (0.866)	7.64 (16.84)
125 (4.921)	270 (10.63)	26 (1.024)	220 (8.661)	188 (7.402)	3 (0.118)	8 x ø 26 (1.024)	11 (24.25)
150 (5.906)	300 (11.81)	28 (1.102)	250 (9.843)	218 (8.583)	3 (0.118)	8 x ø 26 (1.024)	14.7 (32.41)
175 (6.89)	330 (12.99)	28 (1.102)	280 (11.02)	248 (9.764)	3 (0.118)	12 x ø 26 (1.024)	17.6 (38.80)
200 (7.874)	360 (14.17)	30 (1.181)	310 (12.21)	278 (10.95)	3 (0.118)	12 x ø 26 (1.024)	22.7 (50.05)
250 (9.843)	425 (16.73)	32 (1.26)	370 (14.57)	335 (13.19)	3 (0.118)	16 x ø 30 (1.181)	34.2 (75.4)
300 (11.81)	485 (19.09)	34 (1.339)	430 (16.93)	395 (15.55)	4 (0.157)	16 x ø 30 (1.181)	47.3 (104.3)

Tab. 3: Dimensions: DIN flange PN 25. All distance values in mm (in)

**PN 40**

DN	D	b	K	d	f	L	~ kg
25 (0.984)	115 (4.528)	18 (0.709)	85 (3.346)	68 (2.677)	2 (0.079)	4 x ø 14 (0.551)	1.38 (3.042)
32 (1.260)	140 (5.512)	18 (0.709)	100 (3.937)	78 (3.071)	2 (0.079)	4 x ø 18 (0.709)	2.03 (4.475)
40 (1.575)	150 (5.906)	18 (0.709)	110 (4.331)	88 (3.465)	3 (0.118)	4 x ø 18 (0.709)	2.35 (5.101)
50 (1.969)	165 (6.496)	20 (0.787)	125 (4.921)	102 (4.016)	3 (0.118)	4 x ø 18 (0.709)	3.2 (7.055)
65 (2.560)	185 (7.283)	22 (0.866)	145 (5.709)	122 (4.803)	3 (0.118)	8 x ø 18 (0.709)	4.33 (9.546)
80 (3.150)	200 (7.874)	24 (0.945)	160 (6.299)	138 (5.433)	3 (0.118)	8 x ø 18 (0.709)	5.94 (13.1)
100 (3.937)	235 (9.252)	24 (0.945)	190 (7.48)	162 (6.378)	3 (0.118)	8 x ø 22 (0.866)	7.64 (16.84)
125 (4.921)	270 (10.63)	26 (1.024)	220 (8.661)	188 (7.402)	3 (0.118)	8 x ø 26 (1.024)	11 (24.25)
150 (5.906)	300 (11.81)	28 (1.102)	250 (9.843)	218 (8.583)	3 (0.118)	8 x ø 26 (1.024)	14.7 (32.41)
175 (6.89)	350 (13.78)	32 (1.26)	295 (11.61)	260 (10.24)	3 (0.118)	12 x ø 30 (1.181)	22.4 (49.38)
200 (7.874)	375 (14.76)	34 (1.339)	320 (12.6)	285 (11.22)	3 (0.118)	12 x ø 30 (1.181)	27.6 (60.85)
250 (9.843)	450 (17.72)	38 (1.496)	385 (15.16)	345 (13.58)	3 (0.118)	12 x ø 33 (1.299)	44.5 (98.11)
300 (11.81)	515 (20.28)	42 (1.654)	450 (17.72)	410 (16.14)	4 (0.157)	16 x ø 33 (1.299)	64.3 (141.8)

Tab. 4: Dimensions: DIN flange PN 40. All distance values in mm (in)

**PN 64**

DN	D	b	K	d	f	L	~ kg
25 (0.984)	140 (5.512)	24 (0.945)	100 (3.937)	68 (2.677)	2 (0.079)	4 x ø 18 (0.709)	2.65 (5.842)
32 (1.260)	155 (6.102)	24 (0.945)	110 (4.331)	78 (3.071)	2 (0.079)	4 x ø 22 (0.866)	3.24 (7.143)
40 (1.575)	170 (6.693)	26 (1.024)	125 (4.921)	88 (3.465)	3 (0.118)	4 x ø 22 (0.866)	4.09 (9.017)
50 (1.969)	180 (7.087)	26 (1.024)	135 (5.315)	102 (4.016)	3 (0.118)	4 x ø 22 (0.866)	4.51 (9.943)
65 (2.559)	205 (8.071)	26 (1.024)	160 (6.299)	122 (4.803)	3 (0.118)	8 x ø 22 (0.866)	5.71 (12.59)
80 (3.15)	215 (8.465)	28 (1.102)	170 (6.693)	138 (5.433)	3 (0.118)	8 x ø 22 (0.866)	6.92 (15.26)
100 (3.937)	250 (9.843)	30 (1.181)	200 (7.874)	162 (6.378)	3 (0.118)	8 x ø 26 (1.024)	10.1 (22.27)
125 (4.921)	295 (11.61)	34 (1.339)	240 (9.449)	188 (7.402)	3 (0.118)	8 x ø 30 (1.181)	16 (35.27)
150 (5.906)	345 (13.58)	36 (1.417)	280 (11.02)	218 (8.583)	3 (0.118)	8 x ø 33 (1.299)	23.5 (51.81)
175 (6.9)	375 (14.76)	40 (1.575)	310 (12.21)	260 (10.24)	3 (0.118)	12 x ø 33 (1.299)	30.8 (67.9)
200 (7.874)	415 (16.34)	42 (1.654)	345 (13.58)	285 (11.22)	3 (0.118)	12 x ø 36 (1.417)	39.7 (87.52)
250 (9.843)	470 (18.5)	46 (1.811)	400 (15.75)	345 (13.58)	3 (0.118)	12 x ø 36 (1.417)	57.4 (126.5)
300 (11.81)	530 (20.87)	52 (2.047)	460 (18.11)	410 (16.14)	4 (0.157)	16 x ø 36 (1.417)	81 (178.6)

Tab. 5: Dimensions: DIN flange PN 64. All distance values in mm (in)

**PN 100**

DN	D	b	K	d	f	L	~ kg
25 (0.984)	140 (5.512)	24 (0.945)	100 (3.937)	68 (2.677)	2 (0.079)	4 x ø 18 (0.709)	2.65 (5.842)
32 (1.26)	155 (6.102)	24 (0.945)	110 (4.331)	78 (3.071)	2 (0.079)	4 x ø 22 (0.866)	3.24 (7.143)
40 (1.575)	170 (6.693)	26 (1.024)	125 (4.921)	88 (3.465)	3 (0.118)	4 x ø 22 (0.866)	4.09 (9.017)
50 (1.969)	195 (7.677)	28 (1.102)	145 (5.709)	102 (4.016)	3 (0.118)	4 x ø 26 (1.024)	5.84 (12.88)
65 (2.56)	220 (8.661)	30 (1.181)	170 (6.693)	122 (4.803)	3 (0.118)	8 x ø 26 (1.024)	8.03 (17.7)
80 (3.15)	230 (9.055)	32 (1.26)	180 (7.087)	138 (5.433)	3 (0.118)	8 x ø 26 (1.024)	9.43 (20.79)
100 (3.937)	265 (10.43)	36 (1.417)	210 (8.268)	162 (6.378)	3 (0.118)	8 x ø 30 (1.181)	14.3 (31.53)

31088-EN-190926

DN	D	b	K	d	f	L	~ kg
125 (4.921)	315 (12.4)	40 (1.575)	250 (9.843)	188 (7.402)	3 (0.118)	8 x $\varnothing$ 33 (1.299)	22.6 (49.82)
150 (5.906)	355 (13.98)	44 (1.732)	290 (11.42)	218 (8.583)	3 (0.118)	12 x $\varnothing$ 33 (1.299)	31.8 (70.11)
175 (6.89)	385 (15.16)	48 (1.89)	320 (12.6)	260 (10.24)	3 (0.118)	12 x $\varnothing$ 33 (1.3)	41.3 (91.05)
200 (7.874)	430 (16.93)	52 (2.047)	360 (14.17)	285 (11.22)	3 (0.118)	12 x $\varnothing$ 36 (1.417)	56.1 (123.7)
250 (9.843)	505 (19.88)	60 (2.362)	430 (16.93)	345 (13.58)	3 (0.118)	12 x $\varnothing$ 39 (1.535)	89.6 (197.5)
300 (11.81)	585 (23.03)	68 (2.677)	500 (19.69)	410 (16.14)	4 (0.157)	16 x $\varnothing$ 42 (1.654)	119 (262.4)

Tab. 6: Dimensions: DIN flange PN 100. All distance values in mm (in)

## 2.2 EN flanges (EN 1092-1)

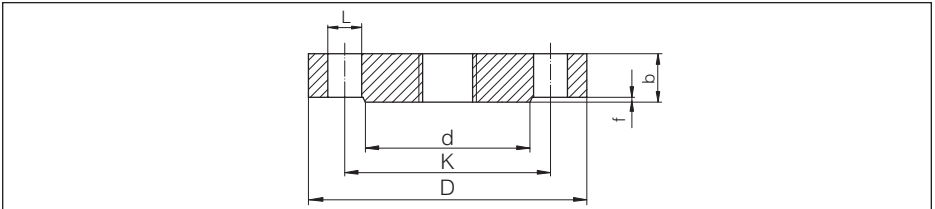


Fig. 2: Dimensions: EN flange EN 1092-1 (seal ledge B1)

- L Diameter of holes (number of holes)
- d Seal ledge diameter
- K Diameter of hole circle
- D Flange diameter
- b Total flange thickness
- f Seal ledge height

### PN 16

DN	D	b	K	d	f	L	~ kg
25 (0.984)	115 (4.528)	18 (0.709)	85 (3.346)	68 (2.677)	2 (0.079)	4 x $\varnothing$ 14 (0.551)	1.5 (3.307)
32 (1.26)	140 (5.512)	18 (0.709)	100 (3.937)	78 (3.071)	2 (0.079)	4 x $\varnothing$ 18 (0.709)	2 (4.409)
40 (1.575)	150 (5.906)	18 (0.709)	110 (4.331)	88 (3.465)	2 (0.079)	4 x $\varnothing$ 18 (0.709)	2.5 (5.512)
50 (1.969)	165 (6.496)	18 (0.709)	125 (4.921)	102 (4.016)	2 (0.079)	4 x $\varnothing$ 18 (0.709)	2.9 (6.393)
65 (2.559)	185 (7.283)	18 (0.709)	145 (5.709)	122 (4.803)	2 (0.079)	8 x $\varnothing$ 18 (0.709)	3.5 (7.716)
80 (3.15)	200 (7.874)	20 (0.787)	160 (6.299)	138 (5.433)	2 (0.079)	8 x $\varnothing$ 18 (0.709)	4.5 (9.921)



DN	D	b	K	d	f	L	~ kg
100 (3.937)	220 (8.661)	20 (0.787)	180 (7.087)	158 (6.221)	2 (0.079)	8 x ø 18 (0.709)	5.5 (12.13)
125 (4.921)	250 (9.843)	22 (0.866)	210 (8.268)	188 (7.402)	2 (0.079)	8 x ø 18 (0.709)	8 (17.64)
150 (5.906)	285 (11.22)	22 (0.866)	240 (9.449)	212 (8.346)	2 (0.079)	8 x ø 22 (0.866)	10.5 (23.15)
200 (7.874)	340 (13.39)	24 (0.945)	295 (11.61)	268 (10.55)	2 (0.079)	12 x ø 22 (0.866)	16.5 (36.38)
250 (9.843)	405 (15.95)	26 (1.024)	355 (13.98)	320 (12.6)	2 (0.079)	12 x ø 26 (1.024)	25 (55.12)
300 (11.81)	460 (18.11)	28 (1.102)	410 (16.14)	378 (14.88)	2 (0.079)	12 x ø 26 (1.024)	35 (77.16)

Tab. 7: Dimensions: EN flange PN 16. All distance values in mm (in)

### PN 25

DN	D	b	K	d	f	L	~ kg
25 (0.984)	115 (4.528)	18 (0.709)	85 (3.346)	68 (2.677)	2 (0.079)	4 x ø 14 (0.551)	1.5 (3.307)
32 (1.260)	140 (5.511)	18 (0.709)	100 (3.937)	78 (3.071)	2 (0.079)	4 x ø 18 (0.709)	2 (4.409)
40 (1.575)	150 (5.906)	18 (0.709)	100 (3.937)	88 (3.465)	2 (0.079)	4 x ø 18 (0.709)	2.5 (5.512)
50 (1.969)	165 (6.496)	20 (0.787)	125 (4.921)	102 (4.016)	2 (0.079)	4 x ø 18 (0.709)	3 (6.614)
65 (2.559)	185 (7.284)	22 (0.866)	145 (5.709)	122 (4.803)	2 (0.079)	8 x ø 18 (0.709)	4.5 (9.921)
80 (3.15)	200 (7.874)	24 (0.945)	160 (6.299)	138 (5.433)	2 (0.079)	8 x ø 18 (0.709)	5.5 (12.13)
100 (3.937)	235 (9.252)	24 (0.945)	190 (7.48)	162 (6.378)	2 (0.079)	8 x ø 22 (0.866)	7.5 (16.54)
125 (4.921)	270 (10.63)	26 (1.024)	220 (8.661)	188 (7.402)	2 (0.079)	8 x ø 26 (1.024)	11 (24.25)
150 (5.906)	300 (11.81)	28 (1.102)	250 (9.843)	218 (8.583)	2 (0.079)	8 x ø 26 (1.024)	14.5 (31.97)
200 (7.874)	360 (14.17)	30 (1.181)	310 (12.21)	278 (10.95)	2 (0.079)	12 x ø 26 (1.024)	22.5 (49.6)
250 (9.843)	425 (16.73)	32 (1.26)	370 (14.57)	335 (13.19)	2 (0.079)	12 x ø 30 (1.181)	33.5 (73.86)
300 (11.81)	485 (19.09)	34 (1.339)	430 (16.93)	395 (15.55)	2 (0.079)	16 x ø 30 (1.181)	46.5 (102.5)

Tab. 8: Dimensions: EN flange PN 25. All distance values in mm (in)

## PN 40

DN	D	b	K	d	f	L	~ kg
25 (0.984)	115 (4.528)	18 (0.709)	85 (3.346)	68 (2.677)	2 (0.079)	4 x ø 14 (0.551)	1.5 (3.307)
32 (1.260)	140 (5.512)	18 (0.709)	100 (3.937)	78 (3.071)	2 (0.079)	4 x ø 18 (0.709)	2 (4.409)
40 (1.575)	150 (5.906)	18 (0.709)	110 (4.331)	88 (3.465)	3 (0.118)	4 x ø 18 (0.709)	2.5 (5.512)
50 (1.969)	165 (6.496)	20 (0.787)	125 (4.921)	102 (4.016)	3 (0.118)	4 x ø 18 (0.709)	3 (6.614)
65 (2.559)	185 (7.283)	22 (0.866)	145 (5.709)	122 (4.803)	3 (0.118)	8 x ø 18 (0.709)	4.5 (9.921)
80 (3.15)	200 (7.874)	24 (0.945)	160 (6.299)	138 (5.433)	3 (0.118)	8 x ø 18 (0.709)	5.5 (12.13)
100 (3.937)	235 (9.252)	24 (0.945)	190 (7.48)	162 (6.378)	3 (0.118)	8 x ø 22 (0.866)	7.5 (16.54)
125 (4.921)	270 (10.63)	26 (1.024)	220 (8.661)	188 (7.402)	3 (0.118)	8 x ø 26 (1.024)	11 (24.25)
150 (5.906)	300 (11.81)	28 (1.102)	250 (9.843)	218 (8.583)	3 (0.118)	8 x ø 26 (1.024)	14.5 (31.97)
200 (7.874)	375 (14.76)	36 (1.417)	320 (12.6)	285 (11.22)	3 (0.118)	12 x ø 30 (1.181)	29 (63.93)
250 (9.843)	450 (17.72)	38 (1.496)	385 (15.16)	345 (13.58)	3 (0.118)	12 x ø 33 (1.299)	44.5 (98.11)
300 (11.81)	515 (20.28)	42 (1.654)	450 (17.72)	410 (16.14)	4 (0.157)	16 x ø 33 (1.299)	64 (141.1)

Tab. 9: Dimensions: EN flange PN 40. All distance values in mm (in)

## PN 63

DN	D	b	K	d	f	L	~ kg
25 (0.984)	140 (5.512)	24 (0.945)	100 (3.937)	68 (2.677)	2 (0.079)	4 x ø 18 (0.709)	2.5 (5.512)
32 (1.26)	155 (6.102)	24 (0.945)	110 (4.331)	78 (3.071)	2 (0.079)	4 x ø 22 (0.866)	3.5 (7.716)
40 (1.575)	170 (6.693)	26 (1.024)	125 (4.921)	88 (3.465)	2 (0.079)	4 x ø 22 (0.866)	4.5 (9.921)
50 (1.969)	180 (7.087)	26 (1.024)	135 (5.315)	102 (4.016)	2 (0.079)	4 x ø 22 (0.866)	5 (11.02)
65 (2.56)	205 (8.071)	26 (1.024)	160 (6.3)	122 (4.803)	2 (0.079)	8 x ø 22 (0.866)	6 (13.23)
80 (3.15)	215 (8.465)	28 (1.102)	170 (6.693)	138 (5.433)	2 (0.079)	8 x ø 22 (0.866)	7.5 (16.54)
100 (3.937)	250 (9.843)	30 (1.181)	200 (7.874)	162 (6.378)	2 (0.079)	8 x ø 26 (1.024)	10.5 (23.15)
125 (4.921)	295 (11.61)	34 (1.339)	240 (9.449)	188 (7.402)	2 (0.079)	8 x ø 30 (1.181)	16.5 (36.38)

DN	D	b	K	d	f	L	~ kg
150 (5.906)	345 (13.58)	36 (1.417)	280 (11.02)	218 (8.583)	2 (0.079)	8 x ø 33 (1.299)	24.5 (54.01)
200 (7.874)	415 (16.34)	42 (1.654)	345 (13.58)	285 (11.22)	2 (0.079)	12 x ø 36 (1.417)	40.5 (89.29)
250 (9.843)	470 (18.5)	46 (1.811)	400 (15.75)	345 (13.58)	3 (0.118)	12 x ø 36 (1.417)	58 (127.9)
300 (11.81)	530 (20.87)	52 (2.047)	460 (18.11)	410 (16.14)	2 (0.079)	16 x ø 36 (1.417)	83.5 (184.1)

Tab. 10: Dimensions: EN flange PN 63. All distance values in mm (in)

**PN 100**

DN	D	b	K	d	f	L	~ kg
25 (0.984)	140 (5.512)	24 (0.945)	100 (3.937)	68 (2.677)	2 (0.079)	4 x ø 18 (0.709)	2.5 (5.512)
32 (1.26)	155 (6.102)	24 (0.945)	110 (4.331)	78 (3.071)	2 (0.079)	4 x ø 22 (0.866)	3.5 (7.716)
40 (1.575)	170 (6.693)	26 (1.024)	125 (4.921)	88 (3.465)	2 (0.079)	4 x ø 22 (0.866)	4.5 (9.921)
50 (1.969)	195 (7.677)	28 (1.102)	145 (5.709)	102 (4.016)	2 (0.079)	4 x ø 26 (1.024)	6 (13.23)
65 (2.56)	220 (8.661)	30 (1.181)	170 (6.693)	122 (4.803)	2 (0.079)	8 x ø 26 (1.024)	8 (17.64)
80 (3.15)	230 (9.055)	32 (1.26)	180 (7.087)	138 (5.433)	2 (0.079)	8 x ø 26 (1.024)	9.5 (20.94)
100 (3.937)	265 (10.43)	36 (1.417)	210 (8.268)	162 (6.378)	2 (0.079)	8 x ø 30 (1.181)	14 (30.87)
125 (4.921)	315 (12.4)	40 (1.575)	250 (9.843)	188 (7.402)	2 (0.079)	8 x ø 33 (1.299)	22.5 (49.6)
150 (5.906)	355 (13.98)	44 (1.732)	290 (11.42)	218 (8.583)	2 (0.079)	12 x ø 33 (1.299)	30.5 (67.24)
200 (7.874)	430 (16.93)	52 (2.047)	360 (14.17)	285 (11.22)	2 (0.079)	12 x ø 36 (1.417)	54.5 (120.2)
250 (9.843)	505 (19.88)	60 (2.362)	430 (16.93)	345 (13.58)	2 (0.079)	12 x ø 39 (1.535)	87.5 (192.9)
300 (11.81)	585 (23.03)	68 (2.677)	500 (19.69)	410 (16.14)	2 (0.079)	16 x ø 42 (1.654)	131.5 (289.9)

Tab. 11: Dimensions: EN flange PN 100. All distance values in mm (in)

### 2.3 ASME flanges (ASME B 16.5)

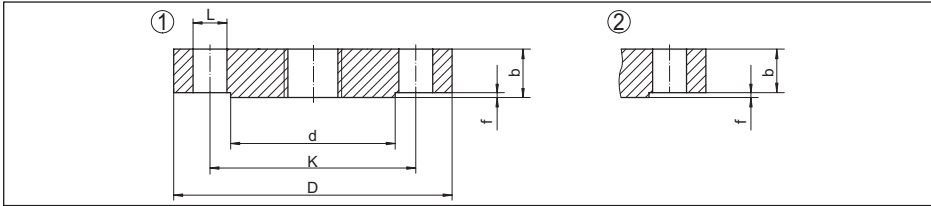


Fig. 3: Dimensions: ASME flange B 16.5 (seal ledge RF)

1 Dimensioning up to Class 400

2 Dimensioning from Class 400

L Diameter of holes (number of holes)

d Seal ledge diameter

K Diameter of hole circle

D Flange diameter

b Total flange thickness

f Seal ledge height 150 lb/300 lb: 1.6 mm (0.06 in) or from 600 lb: 6.4 mm (0.25 in)

#### Class 150

DN	D	b	d	K	L	~ kg
1"	108 (4.252)	14.2 (0.559)	50.8 (2)	79.2 (3.118)	4 x ø 15.7 (0.618)	0.86 (1.896)
1¼"	117.3 (4.618)	15.7 (0.618)	63.5 (2.5)	88.9 (3.5)	4 x ø 15.7 (0.618)	1.17 (2.579)
1½"	127 (5)	17.5 (0.689)	73.2 (2.882)	98.6 (3.882)	4 x ø 15.7 (0.618)	1.53 (3.373)
2"	152.4 (6)	19.1 (0.752)	91.9 (3.618)	120.7 (4.752)	4 x ø 19.1 (0.752)	2.42 (5.335)
2½"	177.8 (7)	22.4 (0.882)	104.6 (4.118)	139.7 (5.5)	4 x ø 19.1 (0.752)	3.94 (8.686)
3"	190.5 (7.5)	23.9 (0.941)	127 (5)	152.4 (6)	4 x ø 19.1 (0.752)	4.93 (10.87)
3½"	215.9 (8.5)	23.9 (0.941)	139.7 (5.5)	177.8 (7)	8 x ø 19.1 (0.752)	6.17 (13.6)
4"	228.6 (9)	23.9 (0.941)	157.2 (6.189)	190.5 (7.5)	8 x ø 19.1 (0.752)	7 (15.43)
5"	254 (10)	23.9 (0.941)	185.7 (7.311)	215.9 (8.5)	8 x ø 22.4 (0.882)	8.63 (19.03)
6"	279.4 (11)	25.4 (1)	215.9 (8.5)	241.3 (9.5)	8 x ø 22.4 (0.882)	11.3 (24.91)
8"	342.9 (13.5)	28.4 (1.118)	269.7 (10.62)	298.5 (11.75)	8 x ø 22.4 (0.882)	19.6 (43.21)
10"	406.4 (16)	30.2 (1.189)	323.8 (12.75)	362 (14.25)	12 x ø 25.4 (1)	28.8 (63.49)

Tab. 12: Dimensions: ASME flange Class 150. All distance values in mm (in)

## Class 300

DN	D	b	d	K	L	~ kg
1"	124 (4.882)	17.5 (0.689)	50.8 (2)	88.9 (3.5)	4 x ø 19.1 (0.752)	1.39 (3.064)
1¼"	133.4 (5.252)	19.1 (0.752)	63.5 (2.5)	98.6 (3.882)	4 x ø 19.1 (0.752)	1.79 (3.946)
1½"	155.4 (6.118)	20.6 (0.811)	73.2 (2.882)	114.3 (4.5)	4 x ø 22.4 (0.882)	2.66 (5.864)
2"	165.1 (6.5)	22.4 (0.882)	91.9 (3.618)	127 (5)	8 x ø 19.1 (0.752)	3.18 (7.011)
2½"	190.5 (7.5)	25.4 (1)	104.6 (4.118)	149.4 (5.882)	8 x ø 22.4 (0.882)	4.85 (10.69)
3"	209.5 (8.248)	28.4 (1.118)	127 (5)	168.1 (6.618)	8 x ø 22.4 (0.882)	6.81 (15.01)
3½"	228.6 (9)	30.2 (1.189)	139.7 (5.5)	184.2 (7.252)	8 x ø 22.4 (0.882)	8.71 (19.2)
4"	254 (10)	31.8 (1.252)	157.2 (6.189)	200.2 (7.882)	8 x ø 22.4 (0.882)	11.5 (25.35)
5"	279.4 (11)	35.1 (1.382)	185.7 (7.311)	235 (9.252)	8 x ø 22.4 (0.882)	15.6 (34.39)
6"	317.5 (12.5)	36.6 (1.441)	215.9 (8.5)	269.7 (10.62)	12 x ø 22.4 (0.882)	20.9 (46.08)
8"	381 (15)	41.1 (1.618)	269.7 (10.62)	330.2 (13)	12 x ø 25.4 (1)	34.3 (75.62)
10"	444.5 (17.5)	47.8 (1.882)	323.8 (12.75)	387.4 (15.25)	16 x ø 28.4 (1.118)	53.3 (117.5)

Tab. 13: Dimensions: ASME flange Class 300. All distance values in mm (in)

## Class 600

DN	D	b	d	K	L	~ kg
1"	124 (4.882)	17.5 (0.689)	50.8 (2)	88.9 (3.5)	4 x ø 19.1 (0.752)	1.6 (3.527)
1¼"	133.4 (5.252)	20.6 (0.811)	63.5 (2.5)	98.6 (3.882)	4 x ø 19.1 (0.752)	2.23 (4.916)
1½"	155.4 (6.118)	22.4 (0.882)	73.2 (2.882)	114.3 (4.5)	4 x ø 22.4 (0.882)	3.25 (7.165)
2"	165.1 (6.5)	25.4 (1)	91.9 (3.618)	127 (5)	8 x ø 19.1 (0.752)	4.15 (9.15)
2½"	190.5 (7.5)	28.4 (1.118)	104.6 (4.118)	149.4 (5.882)	8 x ø 22.4 (0.882)	6.13 (13.51)
3"	209.6 (8.252)	31.8 (1.252)	127 (5)	168.1 (6.618)	8 x ø 22.4 (0.882)	8.44 (18.61)
3½"	228.6 (9)	35.1 (1.382)	139.7 (5.5)	184.2 (7.252)	8 x ø 25.4 (1)	11 (24.25)
4"	273.1 (10.75)	38.1 (1.5)	157.2 (6.189)	215.9 (8.5)	8 x ø 25.4 (1)	17.3 (38.14)
5"	330.2 (13)	44.5 (1.752)	185.7 (7.311)	266.7 (10.5)	8 x ø 28.4 (1.118)	29.4 (64.82)

DN	D	b	d	K	L	~ kg
6"	355.6 (14)	47.8 (1.882)	215.9 (8.5)	292.1 (11.5)	12 x ø 28.4 (1.118)	36.1 (79.59)
8"	419.1 (16.5)	55.6 (2.189)	269.7 (10.62)	349.3 (13.75)	12 x ø 31.8 (1.252)	58.9 (129.9)
10"	508 (20)	63.5 (2.5)	323.8 (12.75)	431.8 (17)	16 x ø 35.1 (1.382)	97.5 (215)

Tab. 14: Dimensions: ASME flange Class 600. All distance values in mm (in)

**Class 900**

DN	D	b	d	K	L	~ kg
1"	149.4 (5.882)	28.4 (1.118)	50.8 (2)	101.6 (4)	4 x ø 25.4 (1)	3.57 (7.871)
1¼"	158.8 (6.252)	28.4 (1.118)	63.5 (2.5)	111.3 (4.382)	4 x ø 25.4 (1)	4.14 (9.127)
1½"	177.8 (7)	31.8 (1.252)	73.2 (2.882)	124 (4.882)	4 x ø 28.4 (1.118)	5.75 (12.68)
2"	215.9 (8.5)	38.1 (1.5)	91.9 (3.618)	165.1 (6.5)	8 x ø 25.4 (1)	10.1 (22.27)
2½"	244.4 (9.622)	41.1 (1.618)	104.6 (4.118)	190.5 (7.5)	8 x ø 28.4 (1.118)	14 (30.86)
3"	241.3 (9.5)	38.1 (1.5)	127 (5)	190.5 (7.5)	8 x ø 25.4 (1)	13.1 (28.9)
4"	292.1 (11.5)	44.5 (1.752)	157.2 (6.189)	235 (9.252)	8 x ø 31.8 (1.252)	26.9 (59.3)
5"	349.3 (13.75)	50.8 (2)	185.7 (7.311)	279.4 (11)	8 x ø 35.1 (1.382)	36.5 (80.47)
6"	381 (15)	55.6 (2.189)	215.9 (8.5)	317.5 (12.5)	12 x ø 31.8 (1.252)	47.4 (104.5)
8"	469.9 (18.5)	63.5 (2.5)	269.7 (10.62)	393.7 (15.5)	12 x ø 38.1 (1.5)	82.5 (181.9)
10"	546.1 (21.5)	69.9 (2.752)	323.8 (12.75)	469.9 (18.5)	16 x ø 38.1 (1.5)	122 (269)

Tab. 15: Dimensions: ASME flange Class 900. All distance values in mm (in)

**Class 1500**

DN	D	b	d	K	L	~ kg
1"	149.4 (5.882)	28.4 (1.118)	50.8 (2)	101.6 (4)	4 x ø 25.4 (1)	3.57 (7.871)
1¼"	158.8 (6.252)	28.4 (1.118)	63.5 (2.5)	111.3 (4.382)	4 x ø 25.4 (1)	4.14 (9.127)
1½"	177.8 (7)	31.8 (1.252)	73.2 (2.882)	124 (4.882)	4 x ø 28.4 (1.118)	5.75 (12.68)
2"	215.9 (8.5)	38.1 (1.5)	91.9 (3.618)	165.1 (6.5)	8 x ø 25.4 (1)	10.1 (22.27)
2½"	244.4 (9.622)	41.1 (1.618)	104.6 (4.118)	190.5 (7.5)	8 x ø 28.4 (1.118)	14 (30.87)
3"	266.7 (10.5)	47.8 (1.882)	127 (5)	203.2 (8)	8 x ø 31.8 (1.252)	19.1 (42.11)
4"	311.2 (12.25)	53.8 (2.118)	157.2 (6.189)	241.3 (9.5)	8 x ø 35.1 (1.382)	29.9 (65.92)

DN	D	b	d	K	L	~ kg
5"	374.7 (14.75)	73.2 (2.882)	185.7 (7.311)	292.1 (11.5)	8 x ø 41.1 (1.618)	58.4 (128.8)
6"	393.7 (15.5)	82.6 (3.252)	215.9 (8.5)	317.5 (12.5)	12 x ø 38.1 (1.5)	71.8 (158.3)
8"	482.6 (19)	91.9 (3.618)	269.7 (10.62)	393.7 (15.5)	12 x ø 44.5 (1.752)	122 (269)
10"	584.2 (23)	108 (4.252)	323.8 (12.75)	482.6 (19)	16 x ø 50.8 (2)	210 (463)

Tab. 16: Dimensions: ASME flange Class 1500. All distance values in mm (in)

**Class 2500**

DN	D	b	d	K	L	~ kg
1"	158.8 (6.252)	35.1 (1.382)	50.8 (2)	108 (4.252)	4 x ø 25.4 (1)	4.96 (10.94)
1¼"	184.2 (7.252)	38.1 (1.5)	63.5 (2.5)	130 (5.118)	4 x ø 28.4 (1.118)	7.35 (16.2)
1½"	203.2 (8)	44.5 (1.752)	73.2 (2.882)	146.1 (5.752)	4 x ø 31.8 (1.252)	10.4 (22.93)
2"	235 (9.252)	50.8 (2)	91.9 (3.618)	171.5 (6.752)	8 x ø 28.4 (1.118)	15.6 (34.39)
2½"	266.7 (10.5)	57.2 (2.252)	104.6 (4.118)	196.9 (7.752)	8 x ø 31.8 (1.252)	22.6 (49.82)
3"	304.8 (12)	66.5 (2.618)	127 (5)	228.6 (9)	8 x ø 35.1 (1.382)	34.8 (76.72)
4"	355.6 (14)	76.2 (3)	157.2 (6.189)	273.1 (10.75)	8 x ø 41.1 (1.618)	53.9 (118.8)
5"	419.1 (16.5)	91.9 (3.618)	185.7 (7.311)	323.8 (12.75)	8 x ø 47.8 (1.882)	90.8 (200.2)
6"	482.6 (19)	108 (4.252)	215.9 (8.5)	368.3 (14.5)	12 x ø 53.8 (2.118)	141 (310.9)
8"	552.5 (21.75)	127 (5)	269.7 (10.62)	438.2 (17.25)	12 x ø 53.8 (2.118)	214 (471.8)
10"	673.1 (26.5)	165.1 (6.5)	323.8 (12.75)	539.8 (21.25)	12 x ø 66.5 (2.618)	411 (906.1)

Tab. 17: Dimensions: ASME flange Class 2500. All distance values in mm (in)

## 2.4 JIS flanges (B 2210-1984)

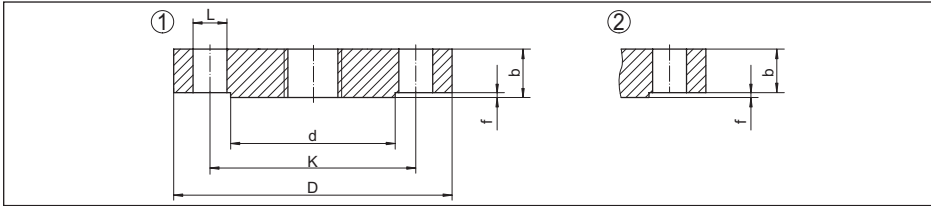


Fig. 4: Dimensions: JIS flange (Regular Flange)

- L** Diameter of holes (number of holes)  
**d** Seal ledge diameter  
**K** Diameter of hole circle  
**D** Flange diameter  
**b** Total flange thickness  
**f** Seal ledge height

### 10 K

DN	D	b	K	d	f	L
25 (0.984)	125 (4.921)	14 (0.551)	90 (3.543)	67 (2.638)	1 (0.039)	4 x $\varnothing$ 19 (0.748)
32 (1.26)	135 (5.315)	16 (0.63)	100 (3.937)	76 (2.992)	2 (0.079)	4 x $\varnothing$ 19 (0.748)
40 (1.575)	140 (5.512)	16 (0.63)	105 (4.134)	81 (3.189)	2 (0.079)	4 x $\varnothing$ 19 (0.748)
50 (1.969)	155 (6.102)	16 (0.63)	120 (4.724)	96 (3.78)	2 (0.079)	4 x $\varnothing$ 19 (0.748)
65 (2.56)	175 (6.89)	18 (0.709)	140 (5.512)	116 (4.567)	2 (0.079)	4 x $\varnothing$ 19 (0.748)
80 (3.15)	185 (7.284)	18 (0.709)	150 (5.906)	126 (4.961)	2 (0.079)	8 x $\varnothing$ 19 (0.748)
100 (3.937)	210 (8.268)	18 (0.709)	175 (6.9)	151 (5.945)	2 (0.079)	8 x $\varnothing$ 19 (0.748)
125 (4.921)	250 (9.843)	20 (0.787)	210 (8.268)	182 (7.165)	2 (0.079)	8 x $\varnothing$ 23 (0.906)
150 (5.906)	280 (11.02)	22 (0.866)	240 (9.449)	212 (8.347)	2 (0.079)	8 x $\varnothing$ 23 (0.906)
200 (7.874)	330 (12.99)	22 (0.866)	290 (11.42)	262 (10.32)	2 (0.079)	12 x $\varnothing$ 23 (0.906)
250 (9.843)	400 (15.75)	24 (0.945)	355 (13.98)	324 (12.76)	2 (0.079)	12 x $\varnothing$ 25 (0.984)
300 (11.81)	445 (17.52)	24 (0.945)	400 (15.75)	368 (14.49)	3 (0.118)	16 x $\varnothing$ 25 (0.984)

Tab. 18: Dimensions: JIS flange 10 K (B 2210-1984) Regular Flange. All distance values in millimetres (in).



### 2.5 GOST flanges (GOST 12815-80)

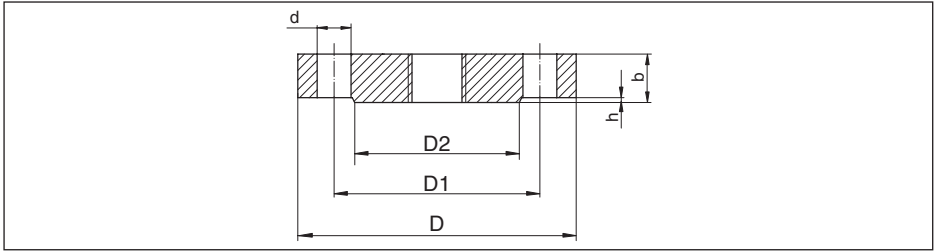


Fig. 5: Dimensions: GOST flange (GOST 12815-80, Modification 1)

- $d$  Diameter of holes (number of holes)
- $D2$  Seal ledge diameter
- $D1$  Diameter of hole circle
- $D$  Flange diameter
- $b$  Total flange thickness
- $h$  Seal ledge height

#### PN 16

DN	D	D1	D2	b	h	d
25 (0.984)	115 (4.528)	85 (3.347)	68 (2.677)	12 (0.472)	2 (0.079)	4 x $\varnothing$ 14 (0.551)
32 (1.26)	135 (5.315)	100 (3.937)	78 (3.071)	13 (0.512)	2 (0.079)	4 x $\varnothing$ 18 (0.709)
40 (1.575)	145 (5.709)	110 (4.331)	88 (3.465)	13 (0.512)	3 (0.118)	4 x $\varnothing$ 18 (0.709)
50 (1.969)	160 (6.299)	125 (4.921)	102 (4.016)	13 (0.512)	3 (0.118)	4 x $\varnothing$ 18 (0.709)
65 (2.56)	180 (7.087)	145 (5.709)	122 (4.803)	15 (0.591)	3 (0.118)	4 x $\varnothing$ 18 (0.709)
80 (3.15)	195 (7.677)	160 (6.299)	133 (5.236)	17 (0.669)	3 (0.118)	8 x $\varnothing$ 18 (0.709)
100 (3.937)	215 (8.465)	180 (7.087)	158 (6.221)	17 (0.669)	3 (0.118)	8 x $\varnothing$ 18 (0.709)
125 (4.921)	245 (9.646)	210 (8.268)	184 (7.244)	19 (0.748)	3 (0.118)	8 x $\varnothing$ 18 (0.709)
150 (5.906)	280 (11.02)	240 (9.449)	212 (8.347)	19 (0.748)	3 (0.118)	8 x $\varnothing$ 22 (0.866)
200 (7.874)	335 (13.19)	295 (11.61)	268 (10.55)	21 (0.827)	3 (0.118)	12 x $\varnothing$ 22 (0.866)
250 (9.843)	405 (15.95)	355 (13.98)	320 (12.6)	23 (0.906)	3 (0.118)	12 x $\varnothing$ 26 (1.024)

Tab. 19: Dimensions: GOST flange PN 16. All distance values in mm (in)

**PN 25**

DN	D	D1	D2	b	h	d
25 (0.984)	115 (4.528)	85 (3.347)	68 (2.677)	14 (0.551)	2 (0.079)	4 x ø 14 (0.551)
32 (1.26)	135 (5.315)	100 (3.937)	78 (3.071)	16 (0.63)	2 (0.079)	4 x ø 18 (0.709)
40 (1.575)	145 (5.709)	110 (4.331)	88 (3.465)	16 (0.63)	3 (0.118)	4 x ø 18 (0.709)
50 (1.969)	160 (6.299)	125 (4.921)	102 (4.016)	17 (0.669)	3 (0.118)	4 x ø 18 (0.709)
65 (2.559)	180 (7.087)	145 (5.709)	122 (4.803)	19 (0.748)	3 (0.118)	8 x ø 18 (0.709)
80 (3.15)	195 (7.677)	160 (6.299)	133 (5.236)	19 (0.748)	3 (0.118)	8 x ø 18 (0.709)
100 (3.937)	230 (9.055)	190 (7.48)	158 (6.221)	21 (0.827)	3 (0.118)	8 x ø 22 (0.866)
125 (4.921)	270 (10.63)	220 (8.661)	184 (7.244)	23 (0.906)	3 (0.118)	8 x ø 26 (1.024)
150 (5.906)	300 (11.81)	250 (9.843)	212 (8.347)	25 (0.984)	3 (0.118)	8 x ø 26 (1.024)
200 (7.874)	360 (14.17)	310 (12.21)	278 (10.95)	27 (1.063)	3 (0.118)	12 x ø 26 (1.024)
250 (9.843)	425 (16.73)	370 (14.57)	335 (13.19)	29 (1.142)	3 (0.118)	12 x ø 30 (1.181)

Tab. 20: Dimensions: GOST flange PN 25. All distance values in mm (in)

**PN 40**

DN	D	D1	D2	b	h	d
25 (0.984)	115 (4.528)	85 (3.347)	68 (2.677)	14 (0.551)	2 (0.079)	4 x ø 14 (0.551)
32 (1.26)	135 (5.315)	100 (3.937)	78 (3.071)	16 (0.63)	2 (0.079)	4 x ø 18 (0.709)
40 (1.575)	145 (5.709)	110 (4.331)	88 (3.465)	16 (0.63)	3 (0.118)	4 x ø 18 (0.709)
50 (1.969)	160 (6.3)	125 (4.921)	102 (4.016)	17 (0.669)	3 (0.118)	4 x ø 18 (0.709)
65 (2.559)	180 (7.087)	145 (5.709)	122 (4.803)	19 (0.748)	3 (0.118)	8 x ø 18 (0.709)
80 (3.15)	195 (7.677)	160 (6.299)	133 (5.236)	21 (0.827)	3 (0.118)	8 x ø 18 (0.709)
100 (3.937)	230 (9.055)	190 (7.480)	158 (6.221)	23 (0.906)	3 (0.118)	8 x ø 22 (0.866)
125 (4.921)	270 (10.63)	220 (8.661)	184 (7.244)	25 (0.984)	3 (0.118)	8 x ø 26 (1.024)
150 (5.906)	300 (11.81)	250 (9.843)	212 (8.347)	27 (1.063)	3 (0.118)	8 x ø 26 (1.024)

DN	D	D1	D2	b	h	d
200 (7.874)	375 (14.76)	320 (12.6)	285 (11.22)	35 (1.378)	3 (0.118)	12 x ø 30 (1.181)
250 (9.843)	445 (17.52)	385 (15.16)	345 (13.58)	39 (1.535)	3 (0.118)	12 x ø 33 (1.299)

Tab. 21: Dimensions: GOST flange PN 40. All distance values in mm (in)

**PN 63**

DN	D	D1	D2	b	h	d
25 (0.984)	135 (5.315)	100 (3.937)	68 (2.677)	20 (0.787)	2 (0.079)	4 x ø 18 (0.709)
32 (1.26)	150 (5.906)	110 (4.331)	78 (3.071)	21 (0.827)	2 (0.079)	4 x ø 22 (0.866)
40 (1.575)	165 (6.496)	125 (4.921)	88 (3.465)	21 (0.827)	3 (0.118)	4 x ø 22 (0.866)
50 (1.969)	175 (6.89)	135 (5.315)	102 (4.016)	23 (0.906)	3 (0.118)	4 x ø 22 (0.866)
65 (2.559)	200 (7.874)	160 (6.299)	122 (4.803)	25 (0.984)	3 (0.118)	8 x ø 22 (0.866)
80 (3.15)	210 (8.268)	170 (6.693)	133 (5.236)	27 (1.063)	3 (0.118)	8 x ø 22 (0.866)
100 (3.937)	250 (9.843)	200 (7.874)	158 (6.221)	29 (1.142)	3 (0.118)	8 x ø 26 (1.024)
125 (4.921)	295 (11.61)	240 (9.449)	184 (7.244)	33 (1.3)	3 (0.118)	8 x ø 30 (1.181)
150 (5.906)	340 (13.39)	280 (11.02)	212 (8.347)	35 (1.378)	3 (0.118)	8 x ø 33 (1.299)
200 (7.874)	405 (15.95)	345 (13.58)	285 (11.22)	41 (1.614)	3 (0.118)	12 x ø 36 (1.417)
250 (9.843)	470 (18.5)	400 (15.75)	345 (13.58)	45 (1.772)	3 (0.118)	12 x ø 36 (1.417)

Tab. 22: Dimensions: GOST flange PN 63. All distance values in mm (in)

**PN 100**

DN	D	D1	D2	b	h	d
25 (0.984)	135 (5.315)	100 (3.937)	68 (2.677)	22 (0.866)	2 (0.079)	4 x ø 18 (0.709)
32 (1.26)	150 (5.906)	110 (4.331)	78 (3.071)	22 (0.866)	2 (0.079)	4 x ø 22 (0.866)
40 (1.575)	165 (6.496)	125 (4.921)	88 (3.465)	23 (0.906)	3 (0.118)	4 x ø 22 (0.866)
50 (1.969)	195 (7.677)	145 (5.709)	102 (4.016)	25 (0.984)	3 (0.118)	4 x ø 26 (1.024)
65 (2.56)	220 (8.661)	170 (6.693)	122 (4.803)	29 (1.142)	3 (0.118)	8 x ø 26 (1.024)

31088-EN-190926

DN	D	D1	D2	b	h	d
80 (3.15)	230 (9.055)	180 (7.087)	133 (5.236)	31 (1.221)	3 (0.118)	8 x $\varnothing$ 26 (1.024)
100 (3.937)	265 (10.43)	210 (8.268)	158 (6.221)	35 (1.378)	3 (0.118)	8 x $\varnothing$ 30 (1.181)
125 (4.921)	310 (12.21)	250 (9.843)	184 (7.244)	39 (1.535)	3 (0.118)	8 x $\varnothing$ 33 (1.299)
150 (5.906)	350 (13.78)	290 (11.42)	212 (8.347)	43 (1.693)	3 (0.118)	12 x $\varnothing$ 33 (1.299)
200 (7.874)	430 (16.93)	360 (14.17)	285 (11.22)	51 (2.008)	3 (0.118)	12 x $\varnothing$ 36 (1.417)
250 (9.843)	500 (19.69)	430 (16.93)	345 (13.58)	57 (2.244)	3 (0.118)	12 x $\varnothing$ 39 (1.535)

Tab. 23: Dimensions: GOST flange PN 100. All distance values in mm (in)

### 3 Pressure-Temperature-Charts

#### 3.1 Pressure-Temperature-Table - EN flanges

The values relate to flanges made of material 316/316L.

PN	16	25	40	63	100
RT	16 (232.1)	25 (362.6)	40 (580.2)	63 (913.7)	100 (1450.4)
50 °C (122 °F)	16 (232.1)	25 (362.6)	40 (580.2)	63 (913.7)	100 (1450.4)
100 °C (212 °F)	16 (232.1)	25 (362.6)	40 (580.2)	63 (913.7)	100 (1450.4)
150 °C (302 °F)	14.5 (210.3)	22.7 (329.2)	36.3 (526.5)	57.3 (831.1)	90.9 (1318.4)
200 °C (392 °F)	13.4 (194.4)	21 (304.6)	33.7 (488.8)	53.1 (770.1)	84.2 (1221.2)
250 °C (482 °F)	12.7 (184.2)	19.8 (287.2)	31.8 (461.2)	50.1 (720.2)	79.5 (1153.1)
300 °C (572 °F)	11.8 (171.1)	18.5 (268.3)	29.7 (430.8)	46.8 (678.8)	74.2 (1076.2)
350 °C (662 °F)	11.4 (165.3)	17.8 (258.2)	28.5 (413.4)	45 (652.7)	71.4 (1035.6)
400 °C (752 °F)	10.9 (158.1)	17.1 (248)	27.4 (397.4)	43.2 (626.6)	68.5 (993.6)
450 °C (842 °F)	10.7 (155.2)	16.8 (243.7)	26.9 (390.2)	42.4 (615)	67.3 (976.1)

Tab. 24: Pressure-Temperature-Table - EN flanges. All specifications in bar (psig)

RT Temperature range -10 ... +50 °C

#### 3.2 Pressure-Temperature-Table - ASME flanges

The values relate to flanges made of material 316/316L.

Class	150	300	400	600	900	1500	2500
RT	19 (275.6)	49.6 (719.4)	66.2 (960.1)	99.3 (1440.2)	148.9 (2159.6)	248.2 (3599.8)	413.7 (6000.2)
50 °C (122 °F)	18.4 (266.9)	48.1 (697.6)	64.2 (931.1)	96.2 (1395.3)	144.3 (2092.9)	240.6 (3489.6)	400.9 (5814.6)
100 °C (212 °F)	16.2 (235)	42.2 (612.1)	56.3 (816.6)	84.4 (1224.1)	126.6 (1836.2)	211 (3060.3)	351.6 (5099.5)
150 °C (302 °F)	14.8 (214.7)	38.5 (558.4)	51.3 (744)	77 (1116.8)	115.5 (1675.2)	192.5 (2792)	320.8 (4652.8)
200 °C (392 °F)	13.7 (198.7)	35.7 (517.8)	47.6 (690.4)	71.3 (1034.1)	107 (1551.9)	178.3 (2586)	297.2 (4310.5)
250 °C (482 °F)	12.1 (175.5)	33.4 (484.4)	44.5 (645.4)	66.8 (968.9)	101.1 (1466.3)	166.9 (2420.7)	278.1 (4033.5)
300 °C (572 °F)	10.2 (147.9)	31.6 (458.3)	42.2 (612.1)	63.2 (916.6)	94.9 (1376.4)	158.1 (2293)	263.5 (3821.7)
325 °C (617 °F)	9.3 (134.9)	30.9 (448.2)	41.2 (597.6)	61.8 (896.3)	92.7 (1344.5)	154.4 (2239.4)	257.4 (3733.3)
350 °C (662 °F)	8.4 (121.8)	30.3 (439.5)	40.4 (586)	60.7 (867.3)	91 (1319.8)	151.6 (2198.8)	252.7 (3665.1)
375 °C (707 °F)	7.4 (107.3)	29.9 (433.7)	39.8 (577.3)	59.8 (867.3)	89.6 (1299.5)	149.4 (2166.9)	249 (3611.4)

31088-EN-190926

Class	150	300	400	600	900	1500	2500
400 °C (752 °F)	6.5 (94.3)	29.4 (426.4)	39.3 (570)	58.9 (854.3)	88.3 (1280.7)	147.2 (2135)	245.3 (3557.8)
425 °C (797 °F)	5.5 (79.8)	29.1 (422.1)	38.9 (564.2)	58.3 (845.6)	87.4 (1267.6)	145.7 (2113.2)	242.9 (3523)
450 °C (842 °F)	4.6 (66.7)	28.8 (417.7)	38.5 (558.4)	57.7 (836.9)	86.5 (1254.6)	144.2 (2091.4)	240.4 (3486.7)

Tab. 25: Pressure-Temperature-Table - ASME flanges. All specifications in bar (psig)

RT Temperature range -29 ... +38 °C

### 3.3 Pressure-Temperature-Table - GOST flanges

The values relate to flanges made of material 316L.

#### PN 25

Temperature	250 °C (482 °F)	300 °C (572 °F)	350 °C (662 °F)	400 °C (752 °F)
DN 100	25 (362.6)	25 (362.6)	25 (362.6)	25 (362.6)
DN 125	25 (362.6)	25 (362.6)	25 (362.6)	25 (362.6)
DN 150	25 (362.6)	39,4 (571.5)	25 (362.6)	25 (362.6)
DN 200	25 (362.6)	25 (362.6)	25 (362.6)	25 (362.6)
DN 250	25 (362.6)	25 (362.6)	25 (362.6)	24.9 (361.1)

Tab. 26: Pressure-Temperature-Table - GOST flanges PN 25. All specifications in bar (psig)

#### PN 40

Temperature	250 °C (482 °F)	300 °C (572 °F)	350 °C (662 °F)	400 °C (752 °F)
DN 100	40 (580.2)	40 (580.2)	40 (580.2)	39.5 (572.9)
DN 125	40 (580.2)	40 (580.2)	39.5 (572.9)	38.4 (557)
DN 150	40 (580.2)	39,4 (571.5)	37.7 (546.8)	36.7 (532.3)
DN 200	40 (580.2)	40 (580.2)	40 (580.2)	40 (580.2)
DN 250	39.2 (568.6)	37.2 (539.5)	35.7 (517.8)	34.6 (501.8)

Tab. 27: Pressure-Temperature-Table - GOST flanges PN 40. All specifications in bar (psig)

#### PN 63

Temperature	250 °C (482 °F)	300 °C (572 °F)	350 °C (662 °F)	400 °C (752 °F)
DN 100	63 (913.7)	63 (913.7)	63 (913.7)	63 (913.7)
DN 125	63 (913.7)	63 (913.7)	63 (913.7)	63 (913.7)
DN 150	63 (913.7)	63 (913.7)	63 (913.7)	62.5 (906.5)
DN 200	63 (913.7)	63 (913.7)	60.7 (880.4)	59 (855.7)
DN 250	63 (913.7)	60.3 (874.6)	57.8 (838.3)	56.2 (815.1)

Tab. 28: Pressure-Temperature-Table - GOST flanges PN 63. All specifications in bar (psig)

**PN 100**

Temperature	250 °C (482 °F)	300 °C (572 °F)	350 °C (662 °F)	400 °C (752 °F)
DN 100	100 (1450)	100 (1450)	100 (1450)	98 (1421)
DN 125	100 (1450)	100 (1450)	97.8 (1419)	94.9 (1376.4)
DN 150	99.7 (1446)	94.5 (1371)	90.6 (1314)	88 (1276)
DN 200	100 (1450)	96.6 (1401)	92.6 (1343)	90 (1305)
DN 250	94.3 (1368)	89.4 (1297)	85.7 (1243)	83.2 (1207)

Tab. 29: Pressure-Temperature-Table - GOST flanges PN 100. All specifications in bar (psig)

**PN 160**

Temperature	100 °C (212 °F)	150 °C (302 °F)	200 °C (392 °F)	250 °C (482 °F)	300 °C (572 °F)	350 °C (662 °F)	400 °C (752 °F)
DN 50	160 (2321)	160 (2321)	153.5 (2226)	142.3 (2064)	134.9 (1957)	129.3 (1875)	125.6 (1822)
DN 65	160 (2321)	160 (2321)	152.8 (2216)	141.7 (2055)	134.2 (1946)	128.7 (1867)	125 (1813)
DN 80	160 (2321)	160 (2321)	154.6 (2242)	143.4 (2080)	135.9 (1971)	130.3 (1890)	125.6 (1822)
DN 100	160 (2321)	146.2 (2121)	134 (1944)	124.3 (1803)	117.8 (1709)	112.9 (1638)	109.7 (1591)
DN 125	155 (2248)	140.2 (2033)	128.5 (1864)	119.2 (1729)	112.9 (1638)	108.3 (1571)	105.1 (1524)
DN 150	160 (2321)	151 (2190)	138.4 (2007)	128.3 (1861)	121.6 (1764)	116.6 (1691)	113.2 (1642)
DN 200	160 (2321)	150.6 (2184)	138 (2002)	128 (1857)	121.3 (1759)	116.3 (1687)	112.9 (1638)
DN 250	157.8 (2289)	142.7 (2070)	130.8 (1897)	121.3 (1759)	115 (1668)	110.2 (1598)	107 (1552)

Tab. 30: Pressure-Temperature-Table - GOST flanges PN 160. All specifications in bar (psig)

Printing date:

# VEGA

All statements concerning scope of delivery, application, practical use and operating conditions of the sensors and processing systems correspond to the information available at the time of printing.

Subject to change without prior notice

© VEGA Grieshaber KG, Schiltach/Germany 2019



31088-EN-190926

VEGA Grieshaber KG  
Am Hohenstein 113  
77761 Schiltach  
Germany

Phone +49 7836 50-0  
Fax +49 7836 50-201  
E-mail: [info.de@vega.com](mailto:info.de@vega.com)  
[www.vega.com](http://www.vega.com)