

Supplementary instructions

Welded socket, threaded and hygienic adapter

VEGAPULS 10, 20, 30 series

VEGABAR 10, 20, 30 series

VEGAPOINT 10, 20, 30 series

VEGASWING series 50



Document ID: 65827



VEGA

Contents

1	Product description	3
2	Welded socket - VEGABAR series 10, 20, 30	5
2.1	Threaded fittings	5
2.2	Hygienic fittings	9
3	Welded socket - VEGAPOINT series 10, 20, 30	11
3.1	Threaded fittings	11
3.2	Threaded fittings for pipe mounting	14
3.3	Hygienic fittings	16
4	Welded socket - VEGASWING series 50	17
4.1	Threaded fittings	17
4.2	Hygienic fittings	21
5	Threaded adapter - VEGAPULS 10, 20, 30 series	22
5.1	Adapter	22
6	Threaded adapter - VEGAPOINT 10, 20, 30 series	24
6.1	Adapter	24
7	Hygienic adapter - VEGAPULS 10, 20, 30 series	25
7.1	Technical data, sealing concept	25
7.2	Clamp according to DIN 32676, ISO 2852	25
7.3	Slotted nut acc. to DIN 11851	26
8	Hygienic adapter - VEGABAR 20, 30 series, VEGAPOINT 10, 20, 30 series	28
8.1	Technical data, sealing concept	28
8.2	Direct welded socket	29
8.3	Clamp according to DIN 32676, ISO 2852	30
8.4	Slotted nut acc. to DIN 11851	34
8.5	Slotted nut acc. to DIN 11864-1	37
8.6	Further hygienic fittings	41
9	Hygienic adapter - VEGAPOINT 10, 20, 30 series	47
9.1	Technical data, sealing concept	47
9.2	Direct welded socket	47
9.3	Clamp according to DIN 32676, ISO 2852	48
9.4	Slotted nut acc. to DIN 11851	49
9.5	Slotted nut acc. to DIN 11864-1	51
9.6	Further hygienic fittings	53
10	Welding, mounting	57
10.1	Welding instructions	57
10.2	Mounting instructions threaded and hygienic adapter	58

1 Product description

Welded socket

Welded sockets are used for connection of sensors to the process.

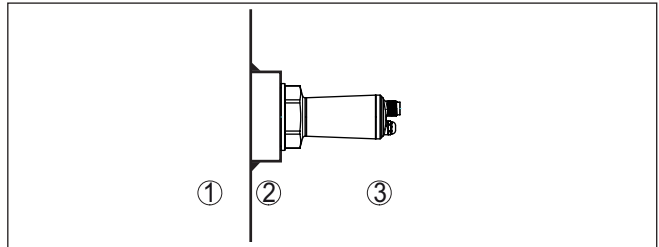


Fig. 1: Function of a welded socket

- 1 Vessel
- 2 Welded socket
- 3 Sensor

Adapter

Threaded adapters are used to adapt sensors with threaded connection to existing welded sockets.

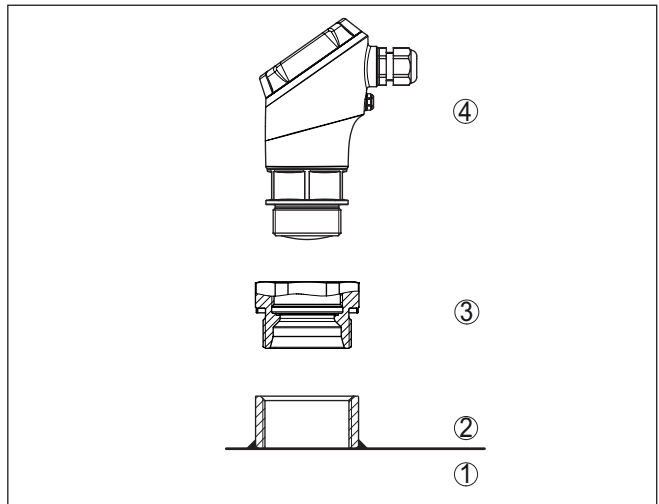


Fig. 2: Function, threaded adapter

- 1 Vessel
- 2 Welded socket
- 3 Adapter
- 4 Sensor

Hygienic adapter

Hygienic adapters are used to adapt sensors with threaded connection and cone or O-ring to existing hygienic welded sockets.

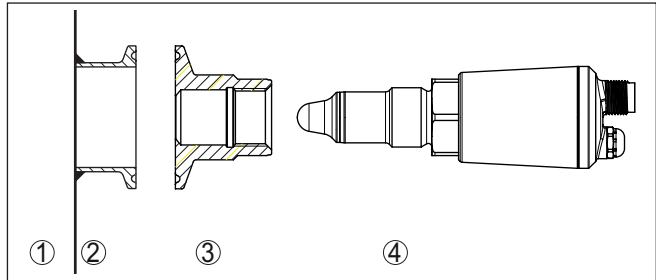


Fig. 3: Function hygienic adapter

- 1 Vessel
- 2 Welded socket
- 3 Hygienic adapter
- 4 Sensor

Process seal

A process seal is required to use the welded sockets or threaded adapters. Depending on the version, the process seal is included as an optional component in the scope of delivery of the welded socket or the sensor.

Pressure device directive

The welding sockets, threaded and hygienic adapters described here are not subject to the EU Pressure Equipment Directive if they are operated at process pressures ≤ 200 bar.

2 Welded socket - VEGABAR series 10, 20, 30

2.1 Threaded fittings

Thread G $\frac{1}{2}$ - manometer connection

Part	Feature	Characteristic
Welded socket	Size	G $\frac{1}{2}$
	Standard	EN 837
	Material	316L
	Product code/Art. no.	WSBR.XDUXXX
Seal	Material	Klingsil C-4400
	Configuration	Flat seal
	Size	21 x 30 x 2 mm
Welding dummy	Material	Brass

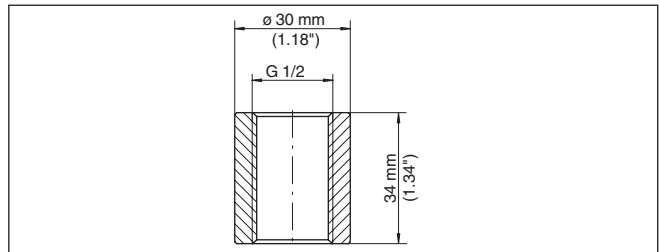


Fig. 4: Dimensions of welded socket, thread G $\frac{1}{2}$ (EN 837) - manometer connection

Thread G $\frac{1}{2}$ - front-flush

Part	Feature	Characteristic
Welded socket	Size	G $\frac{1}{2}$
	Standard	ISO 228-1
	Material	316L
	Product code/Art. no.	WSBR.XC3XXX
Seal	Material	FKM
	Configuration	Seal ring acc. to DIN 3869
	Size	18.5 x 23.9 x 1.5 mm
Welding dummy	Material	Brass
Blind plug	Material	316L

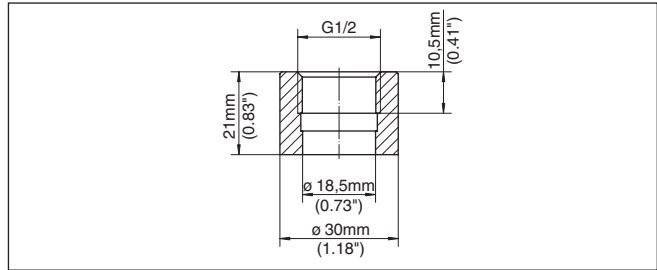


Fig. 5: Dimensions welded socket G $\frac{1}{2}$ (ISO 228-1), front-flush - VEGABAR 82

Thread G $\frac{3}{4}$

Part	Feature	Characteristic
Welded socket	Size	G $\frac{3}{4}$
	Standard	DIN 3852-E
	Material	316L
	Product code/Art. no.	WSBR.XN9XXX
Seal	Material	FKM, EPDM, FFKM
	Configuration	Seal ring
	Size	23.47 x 2.62 mm
Welding dummy	Material	Brass

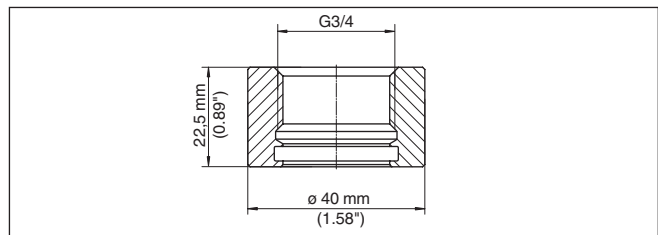


Fig. 6: Dimensions of welded socket, G $\frac{3}{4}$ (DIN 3852-X)

Thread G1

Part	Feature	Characteristic
Welded socket	Size	G1
	Standard	ISO 228-1
	Material	316L
	Product code/Art. no.	WSBR.XC5XAX
Seal	Material	FKM, EPDM
	Configuration	Seal ring acc. to DIN 3869
	Size	29.7 x 35.7 x 2 mm
Welding dummy	Material	Brass

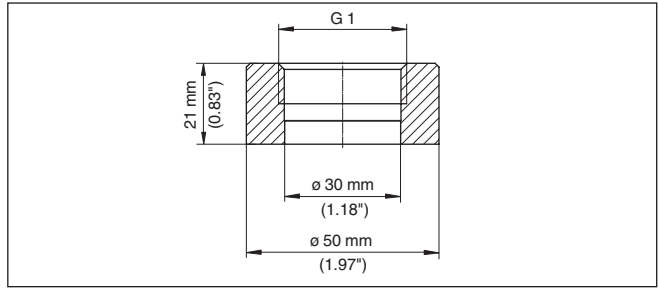


Fig. 7: Dimensions of welded socket, G1 (ISO 228-1)

Thread G1 - Cone seal

Part	Feature	Characteristic
Welded socket	Size	G1
	Standard	ISO 228-1
	Material	316L
	Product code/Art. no.	WSBR.XDHXXX

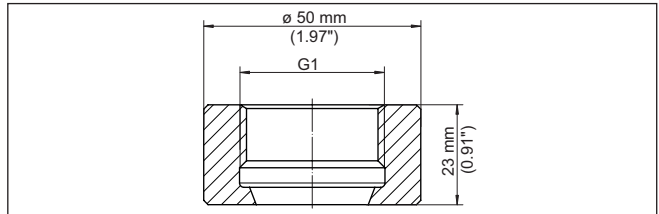


Fig. 8: Dimensions direct welded socket G1 (ISO 228-1) - Cone seal

Thread G1 - O-ring seal

Part	Feature	Characteristic
Welded socket	Size	G1
	Standard	ISO 228-1
	Material	316L
	Product code/Art. no.	WSBR.XLXXXX
Seal	Material	FKM, EPDM, FFKM
	Configuration	Seal ring acc. to DIN 3869
	Size	21.82 x 3.53 mm
Welding dummy	Material	Brass

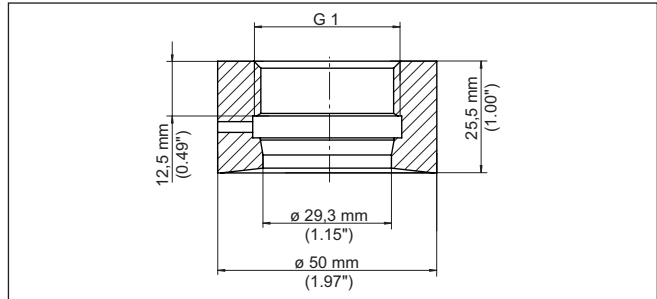


Fig. 9: Dimensions direct welded socket G1 (ISO 228-1) - O-ring seal

Thread G1½

Part	Feature	Characteristic
Welded socket	Size	G1½
	Standard	DIN 3852-A
	Material	316L
	Product code/Art. no.	WSBR.XDAX4X
Seal	Material	Klingsil C-4400
	Configuration	Flat seal
	Size	48 x 55 x 2 mm
Welding dummy	Material	Brass

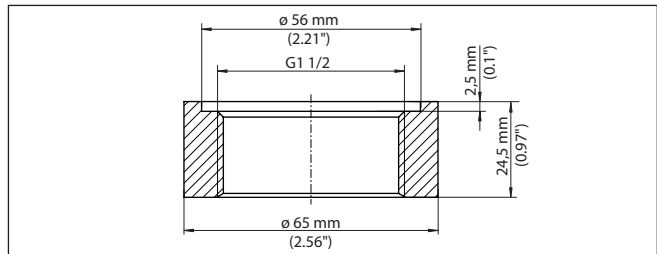


Fig. 10: Dimensions of welded socket, thread G1½ (DIN 3852-A)

M30 x 1.5

Part	Feature	Characteristic
Welded socket	Size	M30 x 1.5
	Standard	DIN 13
	Material	316L
	Product code/Art. no.	WSBR.XALXXX
Seal	Material	FKM, EPDM, FFKM
	Configuration	Seal ring
	Size	20.35 x 1.78 mm

Part	Feature	Characteristic
Welding dummy	Material	Brass

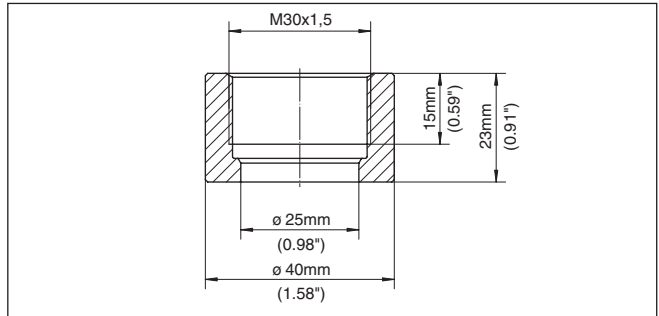


Fig. 11: Dimensions of welded socket, M30 x 1.5

2.2 Hygienic fittings

Clamp 1"

Part	Feature	Characteristic
Welded socket	Size	Clamp 1½"
	Standard	DIN 32676, ISO 2852
	Pressure stage	PN 25
	Product code/Art. no.	WSBR.XAVXXX
Seal	Material	FKM, EPDM
	Configuration	Clamp seal

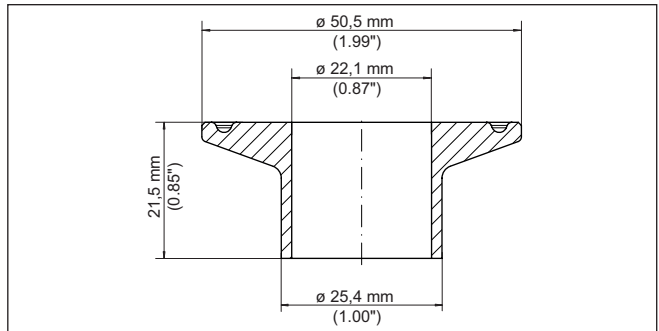


Fig. 12: Dimensions of welded socket, Clamp 1" (DIN 32676, ISO 2852)

Slotted nut DN 40

Component	Feature	Characteristic
Welded socket	Size	DN 40

Component	Feature	Characteristic
	Standard	DIN 11851
	Pressure stage	PN 40
	Material	316L
	Product code/Art. no.	WSBR.XEZXXX
Seal	Material	FKM, EPDM, NBR
	Configuration	Seal ring

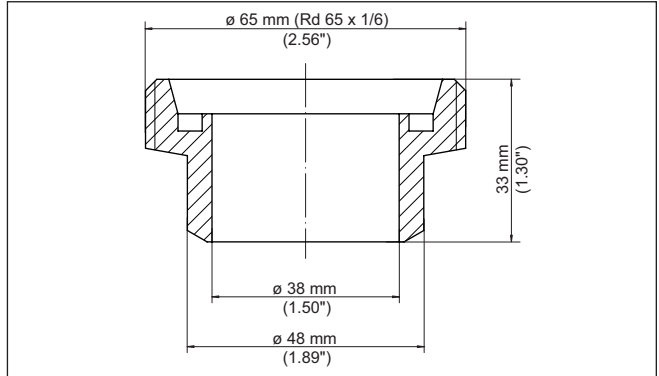


Fig. 13: Dimensions of welded socket, slotted nut DN 40 (DIN 11851)

3 Welded socket - VEGAPOINT series 10, 20, 30

3.1 Threaded fittings

Thread G $\frac{1}{2}$ - L = 15 mm

Part	Feature	Characteristic
Welded socket	Size	G $\frac{1}{2}$
	Standard	DIN 3852-A
	Pressure stage	PN 25
	Material	316L
	Product code/Art. no.	WSPT.XABXXX
Seal	Material	Klingsil C-4400
	Configuration	Flat seal
	Size	21.5 x 25.7 x 1.5 mm
Welding dummy	Material	Brass

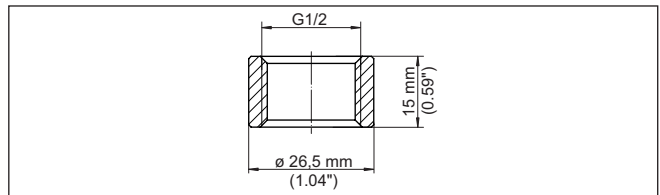


Fig. 14: Dimensions welded socket G1 (DIN 3852-A) - L = 15 mm

Thread G $\frac{1}{2}$ - Hygienic version

Part	Feature	Characteristic
Welded socket	Size	G $\frac{1}{2}$
	Standard	ISO 228-1
	Pressure stage	PN 25
	Material	316L
	Product code/Art. no.	WSPT.XACXXX
Welding dummy	Material	Brass

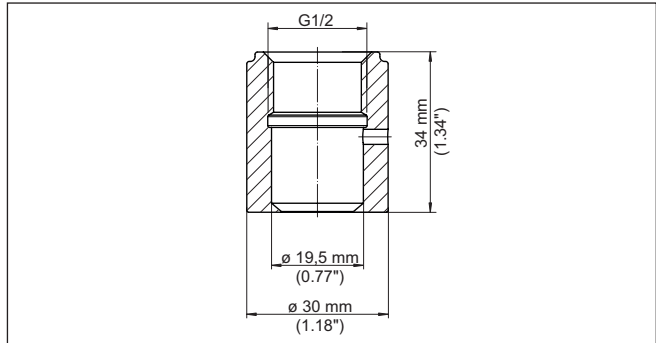


Fig. 15: Dimensions welded socket G $\frac{1}{2}$ (ISO 228-1) - Hygienic version

Thread G $\frac{3}{4}$ - L = 26 mm

Part	Feature	Characteristic
Welded socket	Size	G $\frac{3}{4}$
	Standard	ISO 228-1
	Pressure stage	PN 25
	Material	316L
	Product code/Art. no.	WSPT.XGBXXX
Seal	Material	FKM, EPDM
	Configuration	O-ring seal
	Size	21 x 3 mm
Welding dummy	Material	Brass

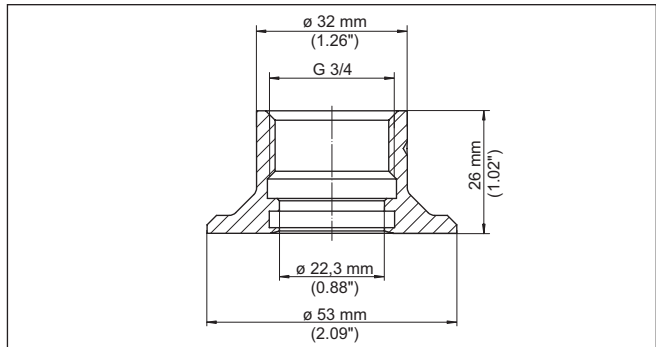


Fig. 16: Dimensions of welded socket, G $\frac{3}{4}$ (ISO 228-1)

Thread G1 - L = 20.5 mm

Part	Feature	Characteristic
Welded socket	Size	G1
	Standard	DIN 3852-A
	Pressure stage	PN 25
	Material	316L
	Product code/Art. no.	WSPT.XAEXXX
Seal	Material	Klingsil C-4400
	Configuration	Flat seal
	Size	33 x 39 x 2 mm
Welding dummy	Material	Brass

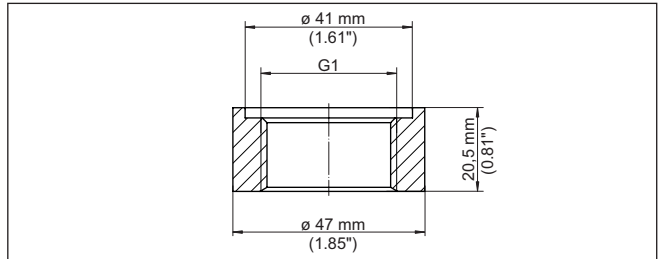


Fig. 17: Dimensions of welded socket, G1 (ISO 228)

Thread G1 - Cone seal

Part	Feature	Characteristic
Welded socket	Size	G1
	Standard	ISO 228-1
	Pressure stage	PN 25
	Material	316L
	Product code/Art. no.	WSPT.XAMXXX
Welding dummy	Material	Brass

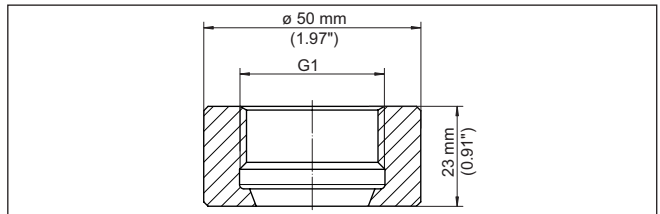


Fig. 18: Dimensions welded socket G1 (ISO 228-1) - Cone seal

Thread G1 - O-ring seal

Part	Feature	Characteristic
Welded socket	Size	G1
	Standard	ISO 228-1
	Pressure stage	PN 25
	Material	316L
	Product code/Art. no.	WSPT.XAFXXX
Seal	Material	EPDM
	Configuration	O-ring seal
	Size	21.82 x 3.53 mm
Welding dummy	Material	Brass

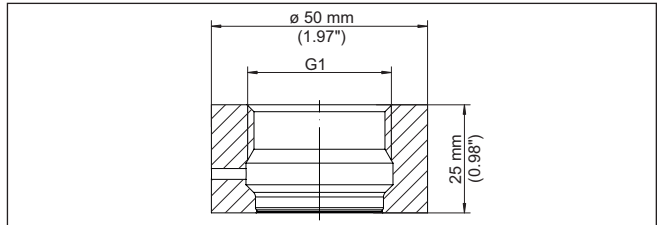


Fig. 19: Dimensions welded socket G1 (ISO 228-1) - O-ring seal

3.2 Threaded fittings for pipe mounting**Thread G1 for pipe mounting - Cone sealing**

Part	Feature	Characteristic
Welded socket	Size	G1
	Standard	ISO 228-1
	Material	316L
	Product code/Art. no.	WSPT.XAVXXX

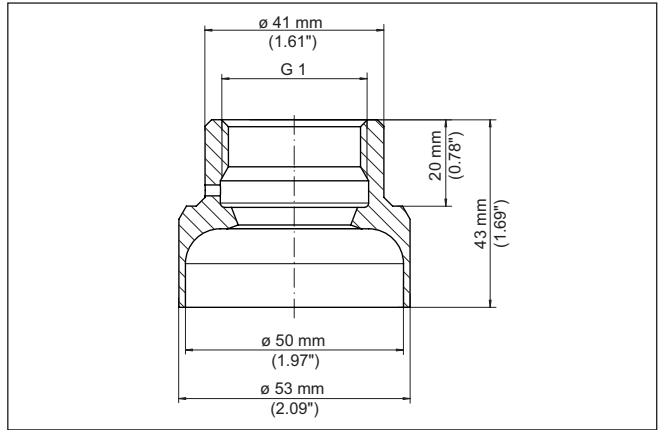


Fig. 20: Dimensions direct welded socket for pipe mounting G1 - Cone sealing

Thread G1 for pipe mounting - O-ring sealing

Part	Feature	Characteristic
Welded socket	Size	G1
	Standard	ISO 228-1
	Material	316L
	Product code/Art. no.	WSPT.XAUXXX
Seal	Material	EPDM
	Configuration	O-ring seal
	Size	21.82 x 3.53 mm

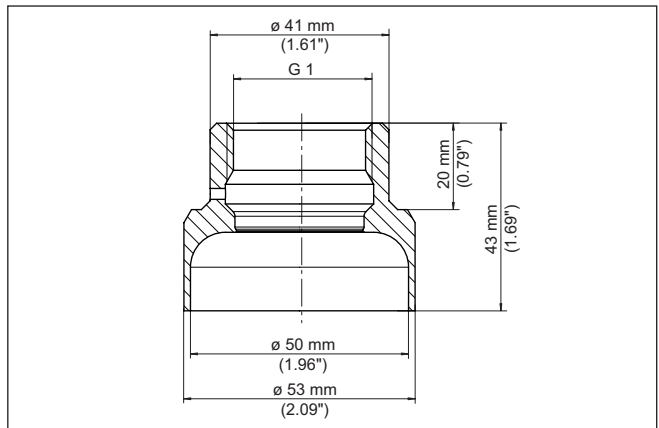


Fig. 21: Dimensions direct welded socket for pipe mounting G1 - O-ring sealing

3.3 Hygienic fittings

Clamp 1"

Part	Feature	Characteristic
Welded socket	Size	G1
	Standard	DIN 32676, ISO 2852
	Material	316L
	Product code/Art. no.	WSPT.XANXXX
Seal	Material	FKM, EPDM
	Configuration	Clamp seal

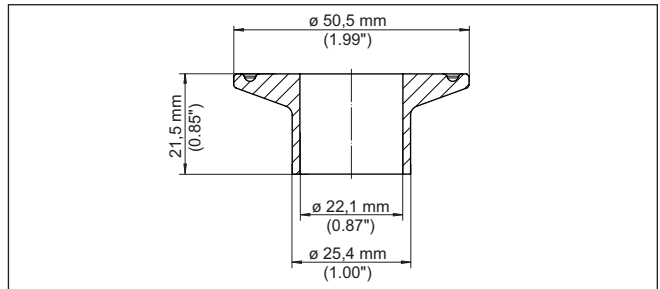


Fig. 22: Dimensions of welded socket, Clamp 1" (DIN 32676, ISO 2852)

4 Welded socket - VEGASWING series 50

4.1 Threaded fittings

Thread G $\frac{3}{4}$

Part	Feature	Characteristic
Welded socket	Size	G $\frac{3}{4}$
	Standard	DIN 3852-A, ISO 228-1
	Pressure stage	PN 60
	Material	316L
	Product code/Art. no.	WSSG.XGBXXX
Seal	Material	FKM, EPDM
	Configuration	O-ring
	Size	21 x 3 mm

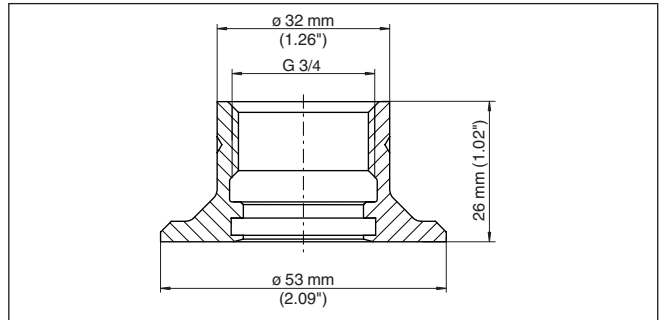


Fig. 23: Dimensions welded socket G $\frac{3}{4}$ (DIN 3852-A, ISO 228-1)

Thread G1

Part	Feature	Characteristic
Welded socket	Size	G1
	Standard	DIN 3852-A, ISO 228-1
	Pressure stage	PN 60
	Material	316L
	Product code/Art. no.	WSSG.XGAXXX
Seal	Material	FKM, EPDM
	Configuration	O-ring
	Size	21 x 3 mm

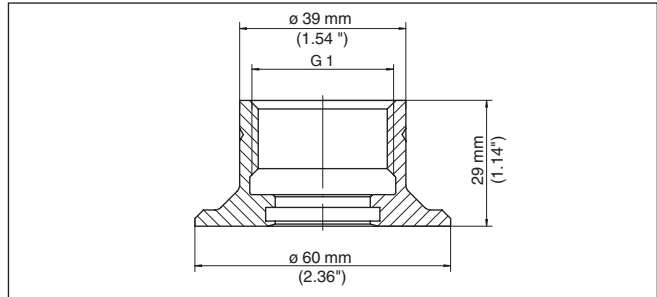


Fig. 24: Dimensions welded socket G1 (DIN 3852-A, ISO 228-1)

Thread G1 with leakage hole

Part	Feature	Characteristic
Welded socket	Size	G1
	Standard	DIN 3852-A, ISO 228-1
	Pressure stage	PN 60
	Material	316L
	Product code/Art. no.	WSSG.XGLXXX
Seal	Material	FKM, EPDM
	Configuration	O-ring
	Size	21.82 x 3.53 mm

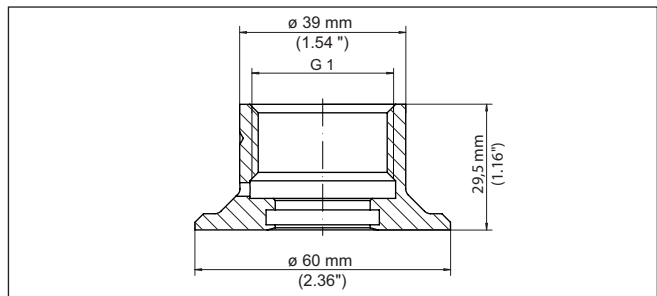


Fig. 25: Dimensions welded socket G1 (DIN 3852-A, ISO 228-1) with leakage hole

Thread G1 - Cone seal

Part	Feature	Characteristic
Welded socket	Size	G1
	Standard	ISO 228-1
	Material	316L
	Product code/Art. no.	WSSG.XAMXXX

65827-EN-220516

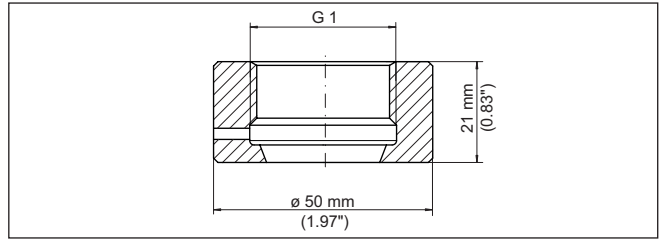


Fig. 26: Dimensions direct welded socket G1 (ISO 228-1) - Cone seal

Thread G1 - O-ring seal

Part	Feature	Characteristic
Welded socket	Size	G1
	Standard	ISO 228-1
	Material	316L
	Product code/Art. no.	WSSG.XAFXXX

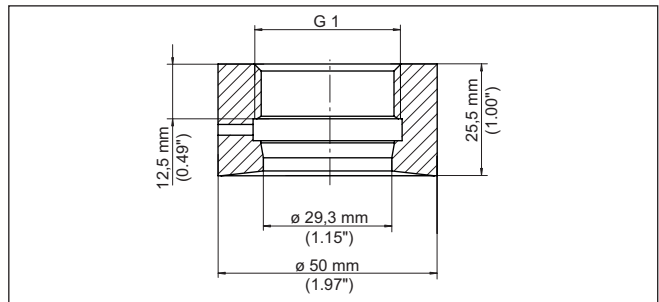


Fig. 27: Dimensions direct welded socket G1 (ISO 228-1) - O-ring seal

Thread G1 for pipe mounting - Cone sealing

Part	Feature	Characteristic
Welded socket	Size	G1
	Standard	ISO 228-1
	Material	316L
	Product code/Art. no.	WSSG.XAVXXX

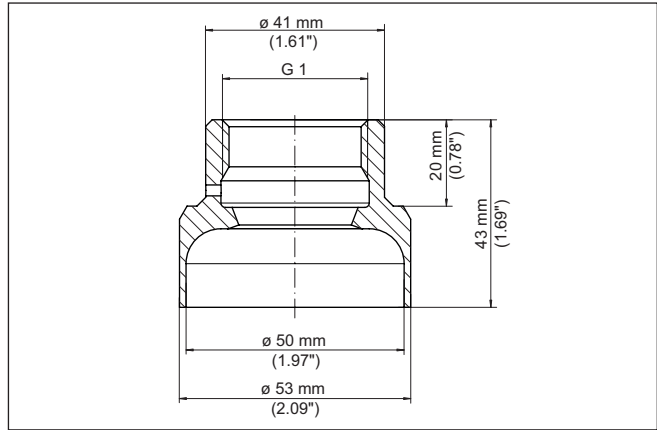


Fig. 28: Dimensions direct welded socket for pipe mounting G1 (ISO 228-1) - Cone sealing

Thread G1 for pipe mounting - O-ring sealing

Part	Feature	Characteristic
Welded socket	Size	G1
	Standard	ISO 228-1
	Material	316L
	Product code/Art. no.	WSSG.XAUXXX
Seal	Material	EPDM
	Configuration	O-ring seal
	Size	21.82 x 3.53 mm

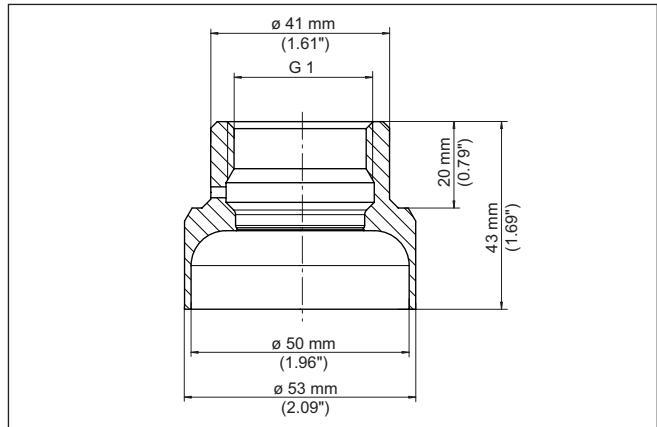


Fig. 29: Dimensions direct welded socket for pipe mounting G1 (ISO 228-1) - O-ring sealing

4.2 Hygienic fittings

Clamp 1"

Part	Feature	Characteristic
Welded socket	Size	Clamp 1"
	Standard	DIN 32676, ISO 2852
	Pressure stage	PN 25
	Product code/Art. no.	WSSG.XCLXXX
Seal	Material	FKM, EPDM
	Configuration	Clamp seal

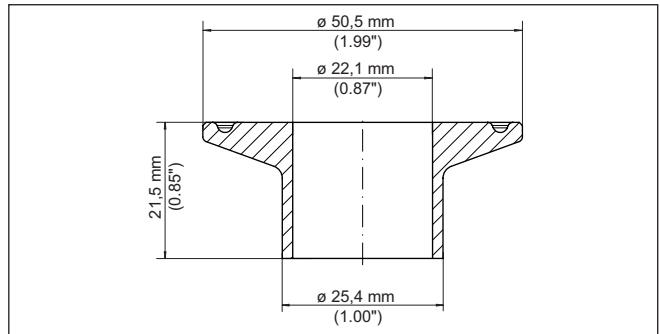


Fig. 30: Dimensions of welded socket, Clamp 1" (DIN 32676, ISO 2852)

5 Threaded adapter - VEGAPULS 10, 20, 30 series

5.1 Adapter

Thread G1½ on thread G2

Part	Feature	Characteristic
Adapter	Size, sensor side	G1½
	Size, process side	G2
	Standard	DIN 3852-X
	Material	PP GF-30
	Pressure stage	3 bar
	Process temperature	-40 ... +80 °C (-40 ... +176 °F)
	Max. torque	7 Nm (5.163 lbf ft)
	Product code/Art. no.	GEWADA-G.G
Seal, sensor side	Material	EPDM
	Configuration	O-ring seal
	Size	37.82 x 1.78 mm
Seal, process side	Material	FPM
	Configuration	Profile seal
	Size	ø 66.5 x 56.5 x 4 mm

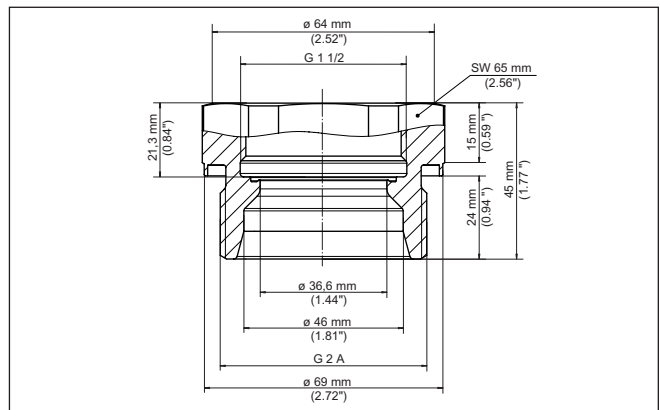


Fig. 31: Dimensions of threaded adapter G1½ (DIN 3852-X) on thread G2 (DIN 3852-X)

**Thread 1½ NPT on thread
2 NPT**

Part	Feature	Characteristic
Adapter	Size, sensor side	1½ NPT
	Size, process side	2 NPT
	Material	PP GF-30
	Pressure stage	3 bar
	Process temperature	-40 ... +80 °C (-40 ... +176 °F)
	Max. torque	7 Nm (5.163 lbf ft)
	Product code/Art. no.	GEWADA-G.N
Seal, sensor side	Material	EPDM
	Configuration	O-ring seal
	Size	37.82 x 1.78 mm

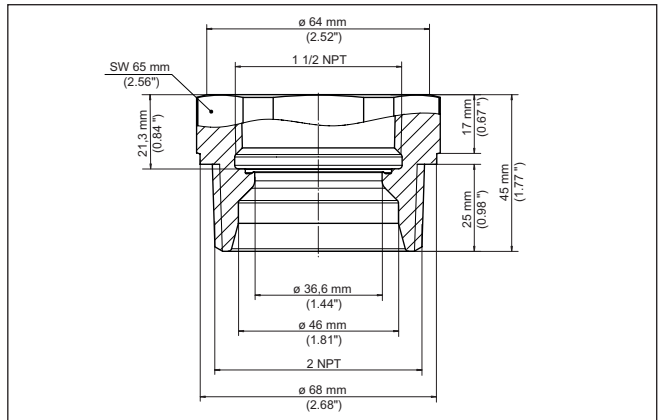


Fig. 32: Dimensions, threaded adapter 1½"NPT on thread 2"NPT

6 Threaded adapter - VEGAPOINT 10, 20, 30 series

6.1 Adapter

Thread G $\frac{1}{2}$ - Thread G1 $\frac{1}{2}$

Part	Feature	Characteristic
Adapter	Size, sensor side	G $\frac{1}{2}$
	Size, process side	G1 $\frac{1}{2}$
	Standard	DIN 3852-A
	Material	1.4404
	Pressure stage	PN 25
	Product code/Art. no.	2.64723
Seal	Material	Klingsil C-4400
	Configuration	Flat seal
	Size	ø 68 x 59 x 2.5 mm

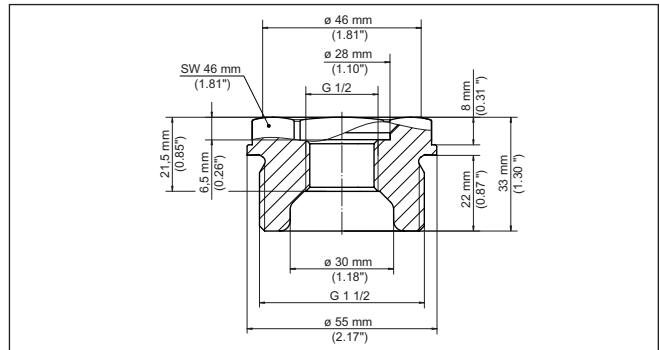


Fig. 33: Dimensions of threaded adapter G1 $\frac{1}{2}$ (DIN 3852-A) on thread G $\frac{1}{2}$ (DIN 3852-A)

7 Hygienic adapter - VEGAPULS 10, 20, 30 series

7.1 Technical data, sealing concept

Common technical data

Part	Feature	Characteristic
Hygienic adapter	Material	1.4435
	Surface	Ra ≤ 0.76 µm
	Hygiene certificate	FDA, EG 1935/2004
Max. torque		7 Nm (5.163 lbf ft)

Seal concept

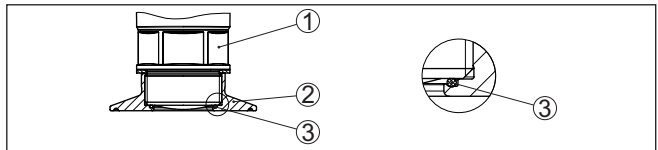


Fig. 34: Seal concept

- 1 Sensor
- 2 Hygienic adapter
- 3 Seal

7.2 Clamp according to DIN 32676, ISO 2852

G1½ - Clamp 2"

Part	Feature	Characteristic
Hygienic adapter	Size, sensor side	G1½
	Standard	DIN 3852-X
	Size, process side	Clamp 2"
	Standard	DIN 32676, ISO 2852
	Pressure stage	PN 40
	Product code/Art. no.	HYGADAPT-R.XC1
Seal	Material EPDM	-40 ... +80 °C/-40 ... +176 °F
	Configuration	O-ring seal
	Size	37.82 x 1.78 mm

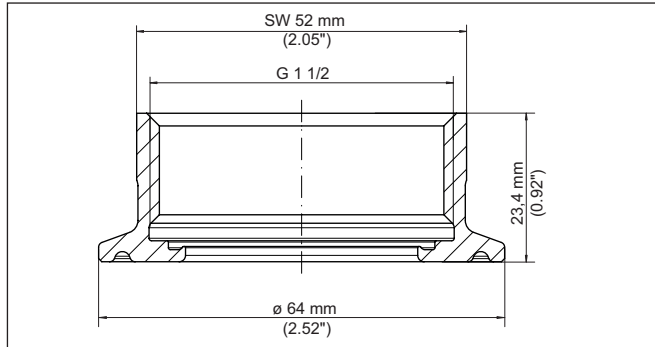


Fig. 35: Dimensions of hygienic adapter G $\frac{1}{2}$ (DIN 3852-X) on Clamp 2" (DIN 32676, ISO 2852) PN 40

7.3 Slotted nut acc. to DIN 11851

G1½ - Slotted nut DN 50

Part	Feature	Characteristic
Hygienic adapter	Size, sensor side	G $\frac{1}{2}$
	Standard	DIN 3852-X
	Size, process side	DN 50
	Standard	DIN 11851
	Pressure stage	PN 40
	Product code/Art. no.	HYGADAPT-R.XB1
Seal	Material EPDM	-40 ... +80 °C/-40 ... +176 °F
	Configuration	O-ring seal
	Size	37.82 x 1.78 mm

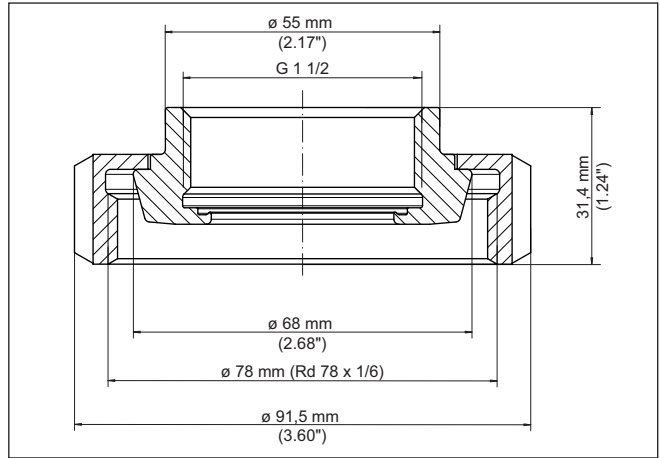


Fig. 36: Dimensions of hygienic adapter G $\frac{1}{2}$ (DIN 3852-X) on slotted nut DN 50 (DIN 11851) PN 40

8 Hygienic adapter - VEGABAR 20, 30 series, VEGAPOINT 10, 20, 30 series

8.1 Technical data, sealing concept

Common technical data

	Feature	Characteristic
Hygienic adapter	Material	1.4435
	Surface	$Ra \leq 0.76 \mu\text{m}$
	Hygiene certificate	FDA, EG 1935/2004
Max. torque	Cone seal	100 Nm (73.76 lbf ft)
	O-ring seal	50 Nm (36.88 lbf ft)

Sealing concept metal/metal

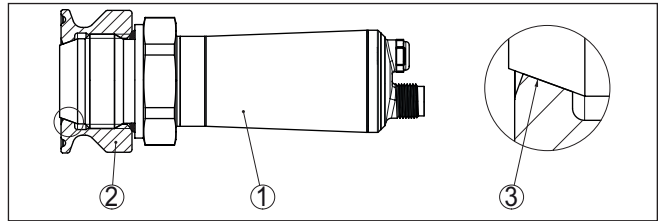


Fig. 37: Cone seal G1 VEGABAR metal/metal

- 1 Sensor
- 2 Hygienic adapter
- 3 Seal metal/metal

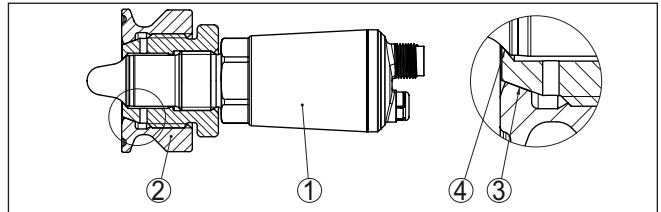


Fig. 38: Cone seal G1 VEGAPOINT plastic/metal plus metal/metal

- 1 Sensor
- 2 Hygienic adapter
- 3 Seal plastic/metal
- 4 Seal metal/metal

Sealing concept O-ring

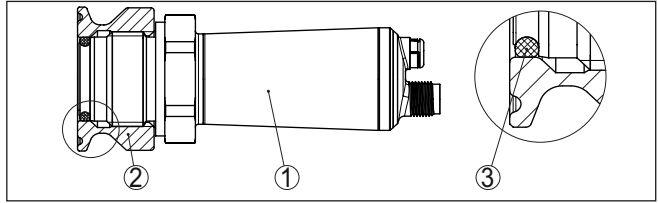


Fig. 39: O-ring seal G1 VEGABAR

- 1 Sensor
- 2 Hygienic adapter
- 3 O-ring seal

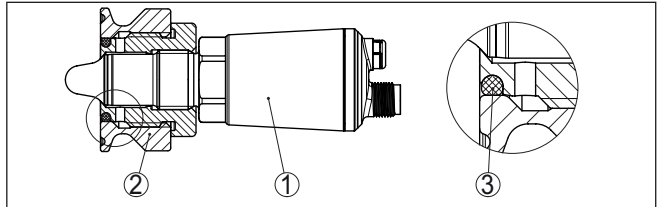


Fig. 40: O-ring seal G1 VEGAPOINT

- 1 Sensor
- 2 Hygienic adapter
- 3 O-ring seal

8.2 Direct welded socket

Thread G1 - Cone seal

Part	Feature	Characteristic
Welded socket	Size	G1 B
	Standard	ISO 228-1
	Product code/Art. no.	HYGADAPT-C.X7F

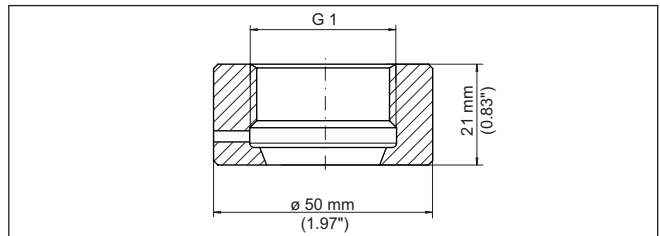


Fig. 41: Dimensions direct welded socket G1 - Cone seal

Thread G1 for pipe mounting - Cone sealing

Part	Feature	Characteristic
Welded socket	Size	G1 B
	Standard	ISO 228-1
	Product code/Art. no.	HYGADAPT-C.X7G

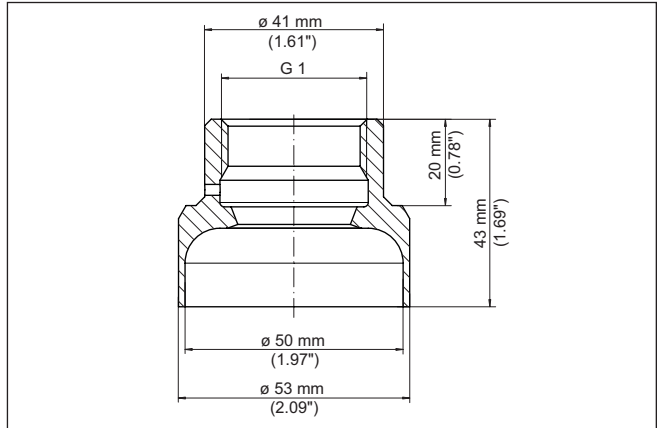


Fig. 42: Dimensions direct welded socket for pipe mounting G1 - Cone sealing

8.3 Clamp according to DIN 32676, ISO 2852**G1 - Clamp 1½" - Cone seal**

Part	Feature	Characteristic
Hygienic adapter	Size, sensor side	G1
	Standard	ISO 228-1
	Size, process side	Clamp 1½"
	Standard	DIN 32676, ISO 2852
	Pressure stage	PN 40
	Product code/Art. no.	HYGADAPT-C.XAT

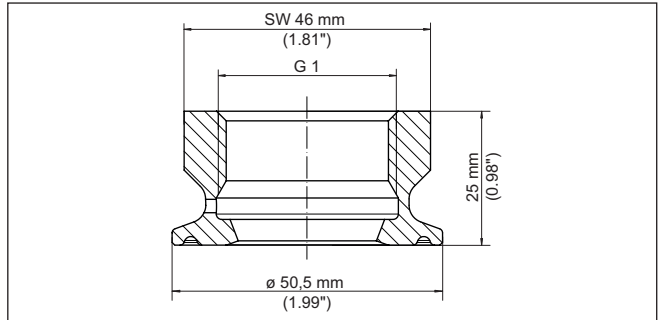


Fig. 43: Dimensions hygienic adapter G1 (DIN 3852-X) on Clamp 1½" (DIN 32676, ISO 2852) PN 40 - Cone seal

G1 - Clamp 2" - Cone seal

Part	Feature	Characteristic
Hygienic adapter	Size, sensor side	G1
	Standard	ISO 228-1
	Size, process side	Clamp 2"
	Standard	DIN 32676, ISO 2852
	Pressure stage	PN 40
	Product code/Art. no.	HYGADAPT-C.XAR

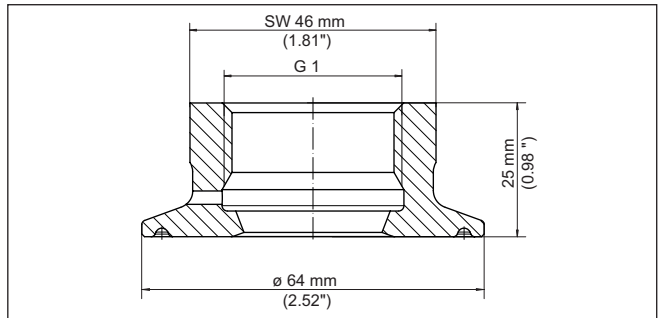


Fig. 44: Dimensions hygienic adapter G1 (DIN 3852-X) on Clamp 2" (DIN 32676, ISO 2852) PN 40 - Cone seal

Thread G1 - Clamp DN 15-20 - O-ring seal

Part	Feature	Characteristic
Hygienic adapter	Size, sensor side	G1
	Standard	ISO 228-1
	Size, process side	Clamp DN 15-20
	Standard	DIN 32676, ISO 2852
	Pressure stage	PN 40
	Additional hygienic certificate	EHEDG, 3A ¹⁾
	Product code/Art. no.	HYGADAPT-L.XAZ

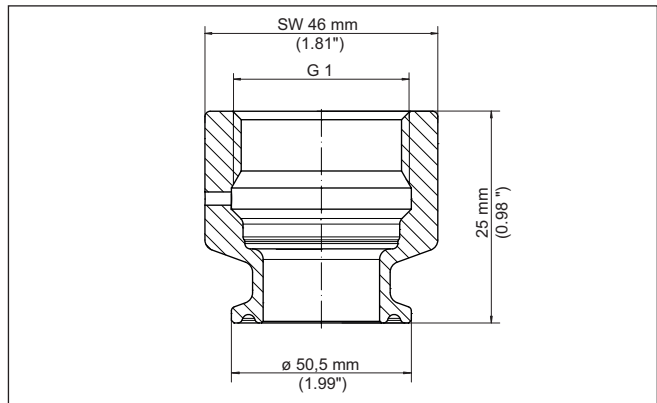


Fig. 45: Dimensions hygienic adapter G1 (DIN 3852-X) on Clamp DN 15-20 (DIN 32676, ISO 2852) PN 40 - O-ring seal

Thread G1 - Clamp 1½" - O-ring seal

Part	Feature	Characteristic
Hygienic adapter	Size, sensor side	G1
	Standard	ISO 228-1
	Size, process side	Clamp 1½"
	Standard	DIN 32676, ISO 2852
	Pressure stage	PN 40
	Additional hygienic certificate	EHEDG, 3A ²⁾
	Product code/Art. no.	HYGADAPT-L.XAT

¹⁾ EHEDG in preparation

²⁾ EHEDG in preparation

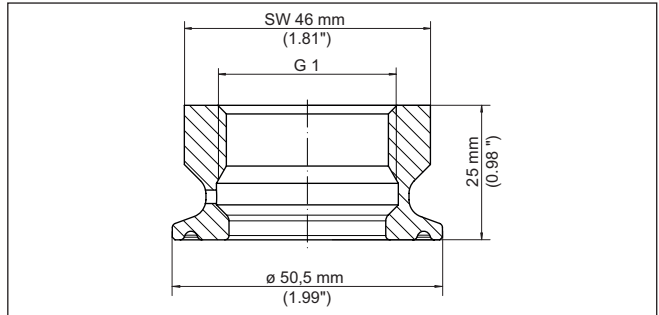


Fig. 46: Dimensions hygienic adapter G1 (DIN 3852-X) on Clamp 1½" (DIN 32676, ISO 2852) PN 40 - O-ring seal

Thread G1 - Clamp 2" - O-ring seal

Part	Feature	Characteristic
Hygienic adapter	Size, sensor side	G1
	Standard	ISO 228-1
	Size, process side	Clamp 2"
	Standard	DIN 32676, ISO 2852
	Pressure stage	PN 40
	Additional hygienic certificate	EHEDG, 3A ³⁾
	Product code/Art. no.	HYGADAPT-L.XAR

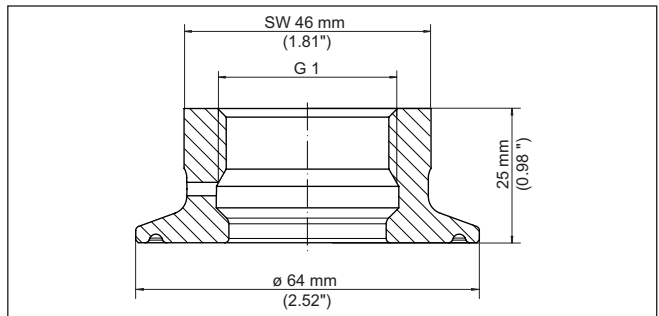


Fig. 47: Dimensions hygienic adapter G1 (DIN 3852-X) on Clamp 2" (DIN 32676, ISO 2852) PN 40 - O-ring seal

³⁾ EHEDG in preparation

8.4 Slotted nut acc. to DIN 11851

Thread G1 - Slotted nut DN 40 - Cone seal

Part	Feature	Characteristic
Hygienic adapter	Size, sensor side	G1
	Standard	ISO 228-1
	Size, process side	DN 40
	Standard	DIN 11851
	Pressure stage	PN 40
	Product code/Art. no.	HYGADAPT-C.XEZ

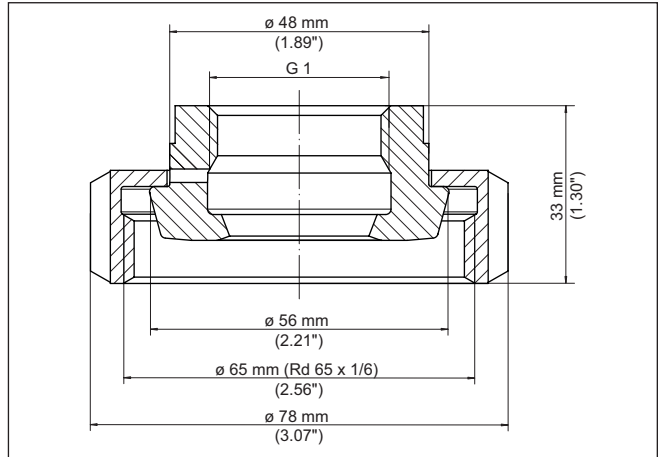


Fig. 48: Dimensions hygienic adapter G1 (DIN 3852-X) on slotted nut DN 40 (DIN 11851) PN 40 - Cone seal

Thread G1 - Slotted nut DN 50 - Cone seal

Part	Feature	Characteristic
Hygienic adapter	Size, sensor side	G1
	Standard	ISO 228-1
	Size, process side	DN 50
	Standard	DIN 11851
	Pressure stage	PN 25
	Product code/Art. no.	HYGADAPT-C.XNB

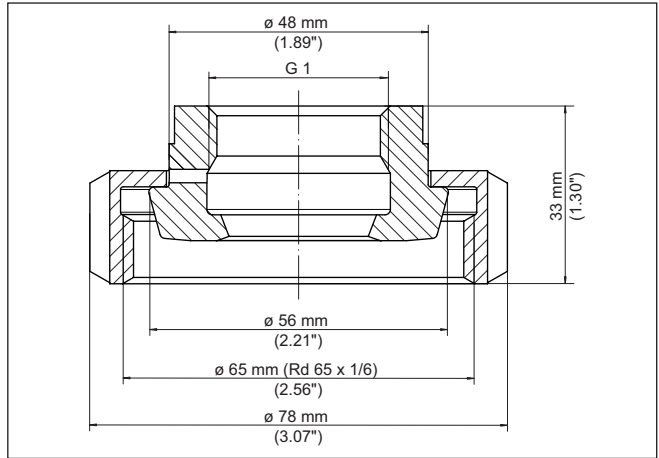


Fig. 49: Dimensions hygienic adapter G1 (DIN 3852-X) on slotted nut DN 40 (DIN 11851) PN 40 - Cone seal

**Thread G1 - Slotted nut
DN 40 - O-ring seal**

Part	Feature	Characteristic
Hygienic adapter	Size, sensor side	G1
	Standard	ISO 228-1
	Size, process side	DN 40
	Standard	DIN 11851
	Pressure stage	PN 40
	Additional hygienic certificate	EHEDG, 3A ⁴⁾
	Product code/Art. no.	HYGADAPT-L.XEZ

⁴⁾ EHEDG in preparation

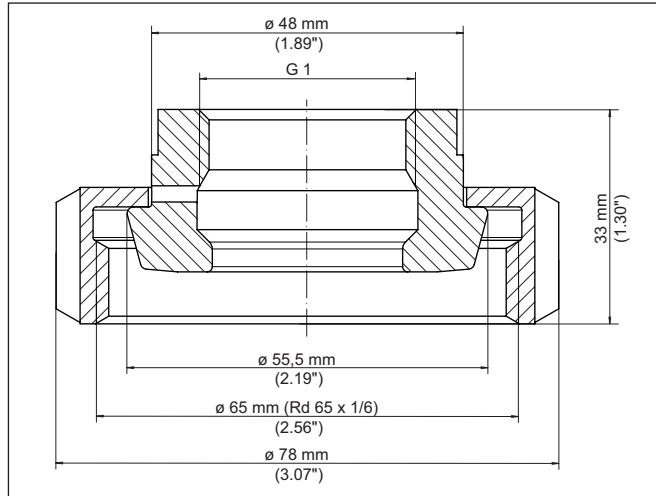


Fig. 50: Dimensions hygienic adapter G1 (DIN 3852-X) on slotted nut DN 40 (DIN 11851) PN 40 - O-ring seal

**Thread G1 - Slotted nut
DN 50 - O-ring seal**

Part	Feature	Characteristic
Hygienic adapter	Size, sensor side	G1
	Standard	ISO 228-1
	Size, process side	DN 50
	Standard	DIN 11851
	Pressure stage	PN 25
	Additional hygienic certificate	EHEDG, 3A ⁵⁾
	Product code/Art. no.	HYGADAPT-L.XEZ

⁵⁾ EHEDG in preparation

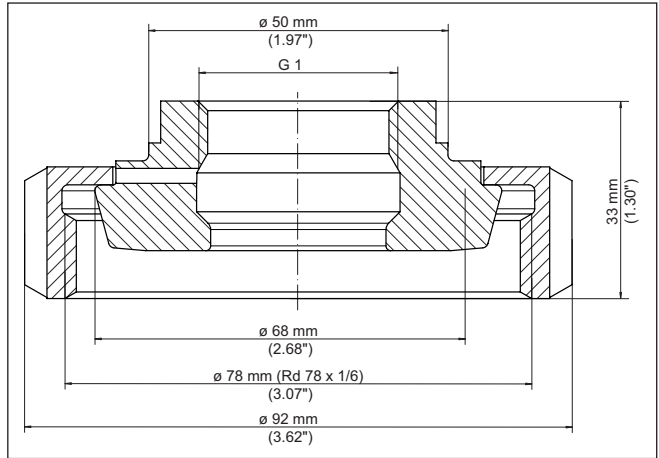


Fig. 51: Dimensions hygienic adapter G1 (DIN 3852-X) on slotted nut DN 50 (DIN 11851) PN 40 - O-ring

8.5 Slotted nut acc. to DIN 11864-1

Thread G1 - Slotted nut DN 40 - Cone seal

Part	Feature	Characteristic
Hygienic adapter	Size, sensor side	G1
	Standard	ISO 228-1
	Size, process side	DN 40
	Standard	DIN 11864-1
	Pressure stage	PN 40
	Product code/Art. no.	HYGADAPT-C.XE2

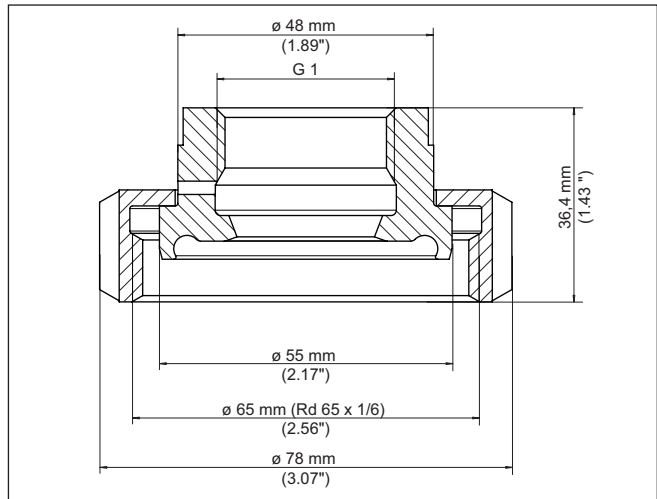


Fig. 52: Dimensions hygienic adapter G $\frac{3}{4}$ (DIN 3852-X) on slotted nut DN 40 (DIN 11864-1) PN 16 - Cone seal

Thread G1 - Slotted nut DN 50 - Cone seal

Part	Feature	Characteristic
Hygienic adapter	Size, sensor side	G1
	Standard	ISO 228-1
	Size, process side	DN 50
	Standard	DIN 11864-1
	Pressure stage	PN 25
	Product code/Art. no.	HYGADAPT-C.XE3

Dimensions:

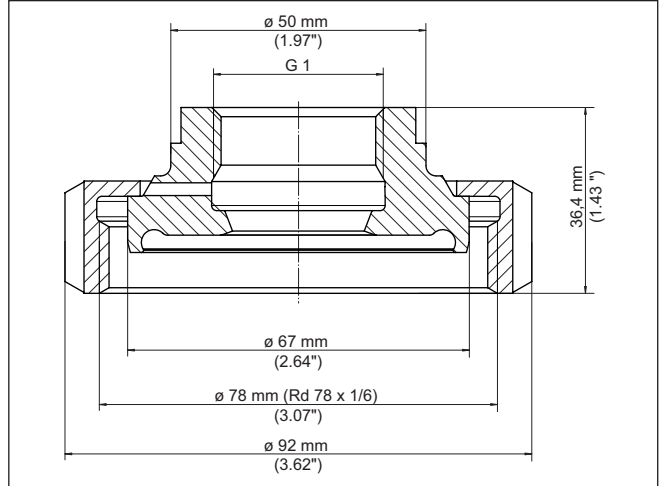


Fig. 53: Dimensions hygienic adapter G $\frac{3}{4}$ (DIN 3852-X) on slotted nut DN 50 (DIN 11864-1) PN 25 - Cone seal

**Thread G1 - Slotted nut
DN 40 - O-ring seal**

Part	Feature	Characteristic
Hygienic adapter	Size, sensor side	G1
	Standard	ISO 228-1
	Size, process side	DN 40
	Standard	DIN 11864-1
	Pressure stage	PN 40
	Additional hygienic certificate	EHEDG, 3A ⁶⁾
	Product code/Art. no.	HYGADAPT-L.XE2

⁶⁾ EHEDG in preparation

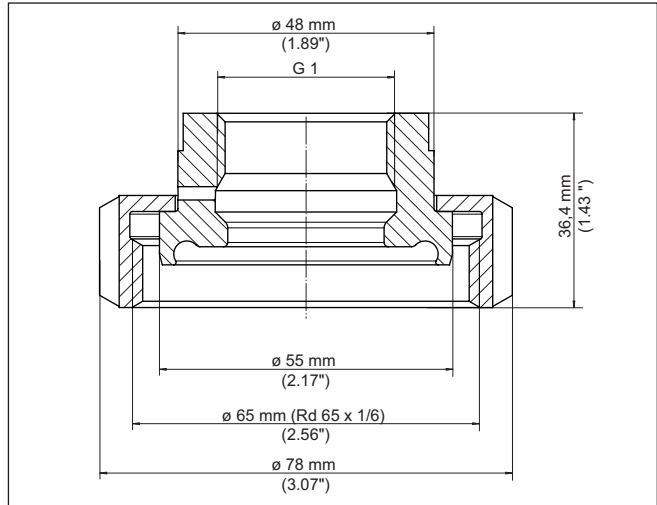


Fig. 54: Dimensions hygienic adapter G $\frac{3}{4}$ (DIN 3852-X) on slotted nut DN 40 (DIN 11864-1) PN 40 - O-ring seal

**Thread G1 - Slotted nut
DN 50 - O-ring seal**

Part	Feature	Characteristic
Hygienic adapter	Size, sensor side	G1
	Standard	ISO 228-1
	Size, process side	DN 50
	Standard	DIN 11864-1
	Pressure stage	PN 25
	Additional hygienic certificate	EHEDG, 3A ⁷⁾
	Product code/Art. no.	HYGADAPT-L.XE3

⁷⁾ EHEDG in preparation

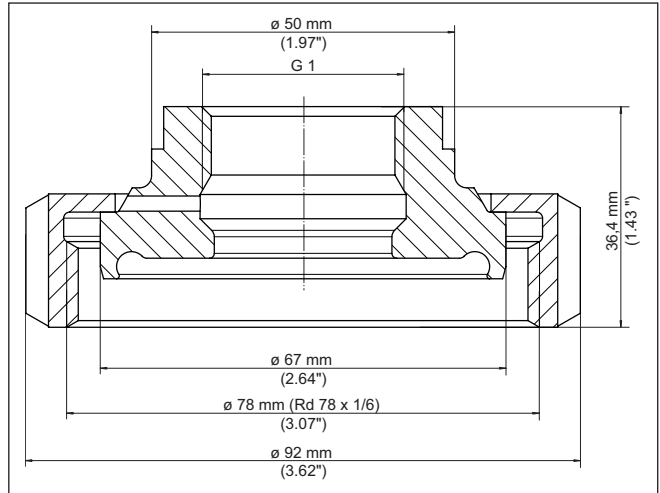


Fig. 55: Dimensions hygienic adapter G $\frac{3}{4}$ (DIN 3852-X) on slotted nut DN 50 (DIN 11864-1) PN 25 - O-ring seal

8.6 Further hygienic fittings

**Thread G1 - Varivent
Form F DN 25 - Cone seal**

Part	Feature	Characteristic
Hygienic adapter	Size, sensor side	G1
	Standard	ISO 228-1
	Size, process side	DN 32
	Standard	Varivent
	Pressure stage	PN 25
	Material	1.4435
	Surface	Ra ≤ 0.76 μm
Product code/Art. no.	HYGADAPT-C.XFS	

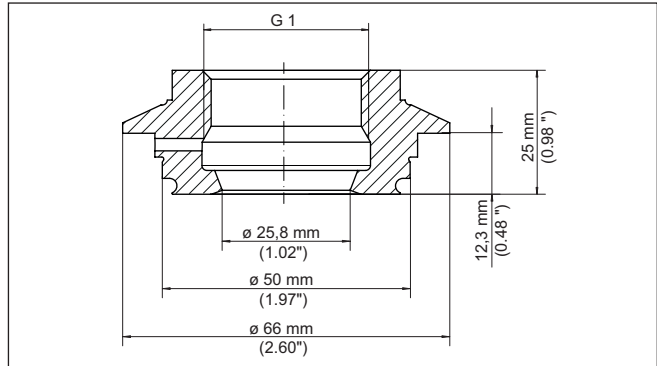


Fig. 56: Dimensions hygienic adapter G1 (DIN 3852-X) on Varivent Form F DN 25 - Cone seal

**Thread G1 - Varivent
Form N DN 40 ... DN 100 -
Cone seal**

Part	Feature	Characteristic
Hygienic adapter	Size, sensor side	G1
	Standard	ISO 228-1
	Size, process side	DN 40
	Standard	Varivent
	Pressure stage	PN 25
	Material	1.4435
	Surface	Ra ≤ 0.76 µm
	Product code/Art. no.	HYGADAPT-C.XFR

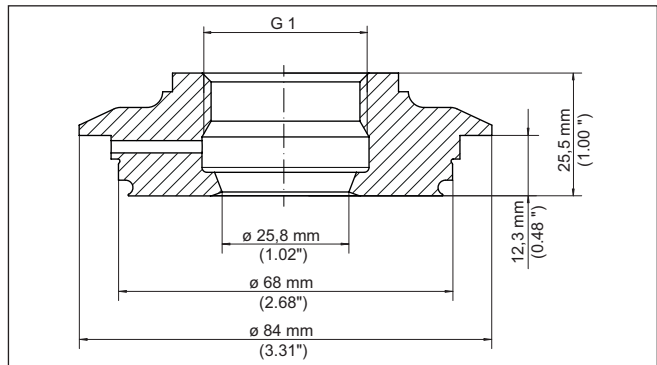


Fig. 57: Dimensions hygienic adapter G1 (DIN 3852-X) on Varivent Form N DN 40 ... DN 100 - Cone seal

**Thread G1 - Varivent
Form F DN 25 - O-ring
seal**

Part	Feature	Characteristic
Hygienic adapter	Size, sensor side	G1
	Standard	ISO 228-1
	Size, process side	DN 40
	Standard	Varivent
	Pressure stage	PN 25
	Material	1.4435
	Surface	Ra ≤ 0.76 µm
	Additional hygienic certificate	EHEDG, 3A ⁸⁾
Product code/Art. no.	HYGADAPT-L.XFS	

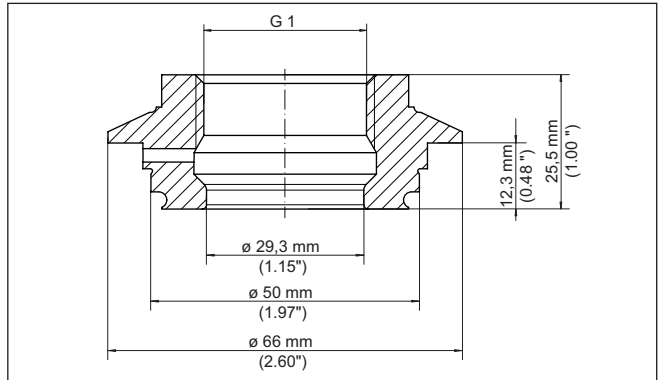


Fig. 58: Dimensions hygienic adapter G1 (DIN 3852-X) on Varivent Form F DN 25 - O-ring seal

**Thread G1 - Varivent
Form N DN 40 ... DN 100 -
O-ring seal**

Part	Feature	Characteristic
Hygienic adapter	Size, sensor side	G1
	Standard	ISO 228-1
	Size, process side	DN 40
	Standard	Varivent
	Pressure stage	PN 25
	Material	1.4435
	Surface	Ra ≤ 0.76 µm
	Additional hygienic certificate	EHEDG, 3A ⁹⁾
Product code/Art. no.	HYGADAPT-L.XFR	

⁸⁾ EHEDG in preparation

⁹⁾ EHEDG in preparation

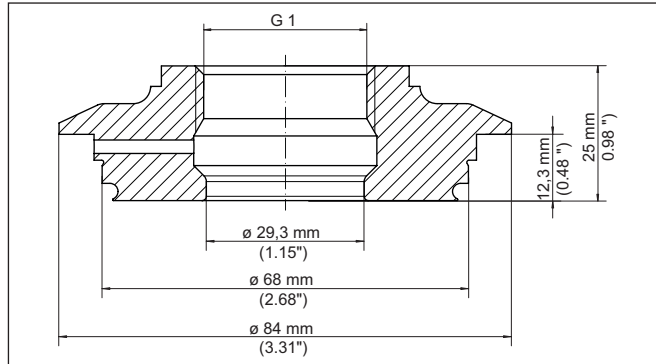


Fig. 59: Dimensions hygienic adapter G1 (DIN 3852-X) on Varivent Form N DN 40 ... DN 100 - O-ring seal

Thread G1 - SMS DN 38 - Cone seal

Part	Feature	Characteristic
Hygienic adapter	Size, sensor side	G1
	Standard	ISO 228-1
	Size, process side	DN 40
	Standard	SMS
	Pressure stage	PN 6
	Material	1.4435
	Surface	Ra ≤ 0.76 μm
	Hygiene certificate	FDA, EG 1935/2004, EHEDG ¹⁰⁾
	Product code/Art. no.	HYGADAPT-C.XFA

¹⁰⁾ EHEDG in preparation

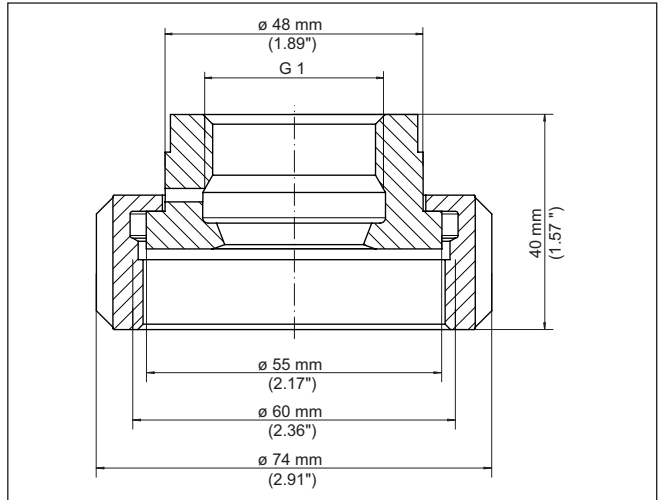


Fig. 60: Dimensions hygienic adapter G1 (DIN 3852-X) on SMS DN 38 - Cone seal

Thread G1 - SMS DN 38 - O-ring seal

Part	Feature	Characteristic
Hygienic adapter	Size, sensor side	G1
	Standard	ISO 228-1
	Size, process side	DN 40
	Standard	SMS
	Pressure stage	PN 6
	Material	1.4435
	Surface	Ra ≤ 0.76 µm
	Additional hygienic certificate	EHEDG, 3A ¹¹⁾
	Product code/Art. no.	HYGADAPT-L.XFA

¹¹⁾ EHEDG in preparation

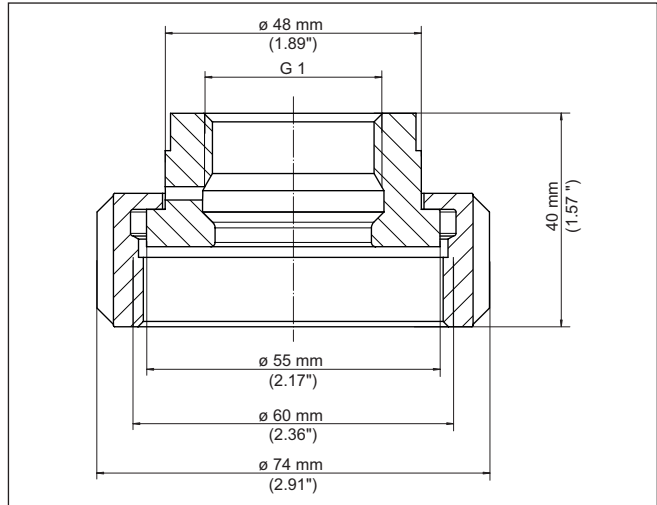


Fig. 61: Dimensions hygienic adapter G1 (DIN 3852-X) on SMS DN 38 - O-ring seal

9 Hygienic adapter - VEGAPOINT 10, 20, 30 series

9.1 Technical data, sealing concept

Common technical data

Part	Feature	Characteristic
Hygienic adapter	Material	1.4435
	Surface	Ra ≤ 0.76 µm
	Hygiene certificate	FDA, EG 1935/2004
Max. torque	Cone seal plastic/metal	50 Nm (36.88 lbf ft)

Sealing concept plastic/metal

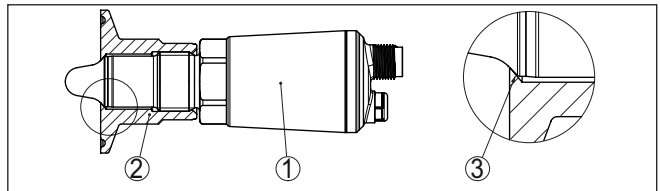


Fig. 62: Cone seal G $\frac{1}{2}$ VEGAPOINT plastic/metal

- 1 Sensor
- 2 Hygienic adapter
- 3 Seal plastic/metal

9.2 Direct welded socket

Thread G $\frac{1}{2}$ - Cone seal

Part	Feature	Characteristic
Welded socket	Size	G $\frac{1}{2}$ B
	Standard	ISO 228-1
	Product code/Art. no.	HYGADAPT-PX7F

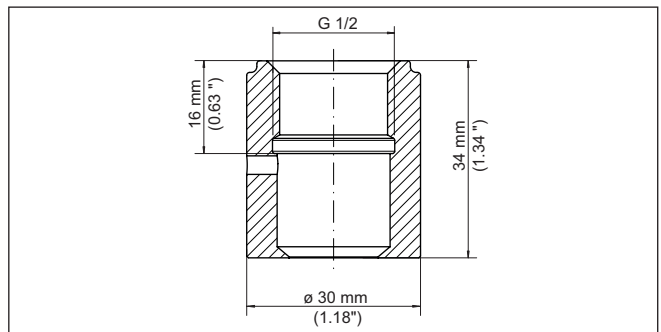


Fig. 63: Dimensions direct welded socket G $\frac{1}{2}$ - Cone seal

9.3 Clamp according to DIN 32676, ISO 2852

Thread G $\frac{1}{2}$ - Clamp 1 $\frac{1}{2}$ " - Cone seal

Part	Feature	Characteristic
Hygienic adapter	Size, sensor side	G $\frac{1}{2}$
	Standard	DIN 3852-X
	Size, process side	Clamp 1 $\frac{1}{2}$ "
	Standard	DIN 32676, ISO 2852
	Pressure stage	PN 40
	Product code/Art. no.	HYGADAPT-P.XAT

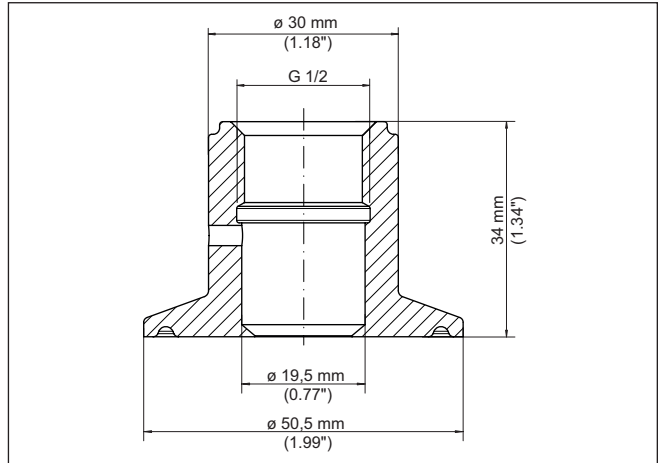


Fig. 64: Dimensions hygienic adapter G $\frac{1}{2}$ (DIN 3852-X) on Clamp 1 $\frac{1}{2}$ " (DIN 32676, ISO 2852) PN 40 - Cone seal

Thread G $\frac{1}{2}$ - Clamp 2"- cone seal

Part	Feature	Characteristic
Hygienic adapter	Size, sensor side	G $\frac{1}{2}$
	Standard	DIN 3852-X
	Size, process side	Clamp 2"
	Standard	DIN 32676, ISO 2852
	Pressure stage	PN 40
	Product code/Art. no.	HYGADAPT-C.XAR

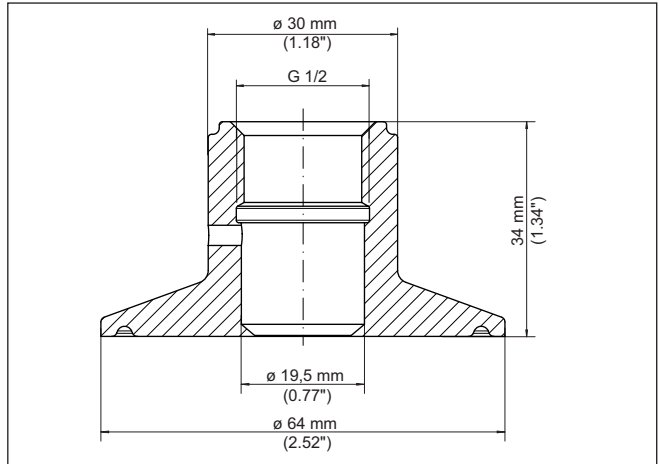


Fig. 65: Dimensions hygienic adapter G $\frac{1}{2}$ (DIN 3852-X) on Clamp 2" (DIN 32676, ISO 2852) PN 40 - Cone seal

9.4 Slotted nut acc. to DIN 11851

**Thread G $\frac{1}{2}$ - Slotted nut
DN 25 - Cone seal**

Part	Feature	Characteristic
Hygienic adapter	Size, sensor side	G $\frac{1}{2}$
	Standard	DIN 3852-X
	Size, process side	DN 25
	Standard	DIN 11851
	Pressure stage	PN 40
	Product code/Art. no.	HYGADAPT-P.XE5

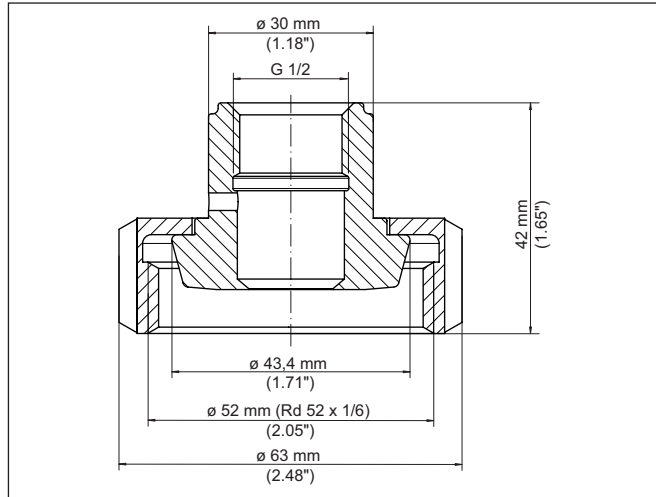


Fig. 66: Dimensions hygienic adapter G $\frac{1}{2}$ (DIN 3852-X) on slotted nut DN 25 (DIN 11851) PN 40 - Cone seal

Thread G $\frac{1}{2}$ - Slotted nut DN 40 - Cone seal

Part	Feature	Characteristic
Hygienic adapter	Size, sensor side	G $\frac{1}{2}$
	Standard	DIN 3852-X
	Size, process side	DN 40
	Standard	DIN 11851
	Pressure stage	PN 40
	Product code/Art. no.	HYGADAPT-P.XEZ

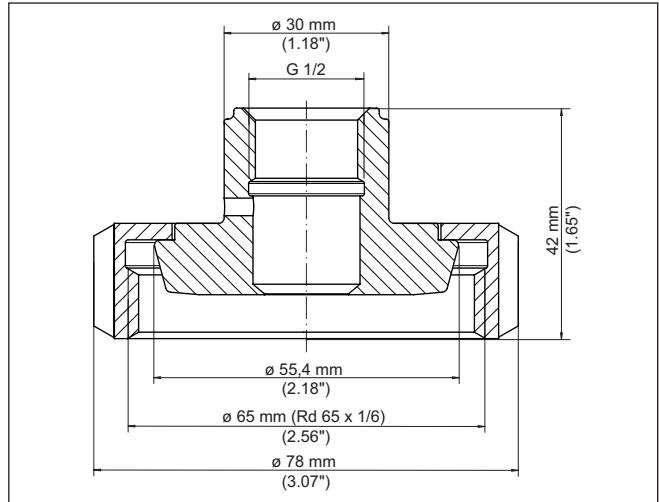


Fig. 67: Dimensions hygienic adapter G $\frac{1}{2}$ (DIN 3852-X) on slotted nut DN 40 (DIN 11851) PN 40 - Cone seal

9.5 Slotted nut acc. to DIN 11864-1

**Thread G $\frac{1}{2}$ - Slotted nut
DN 25 - Cone seal**

Part	Feature	Characteristic
Hygienic adapter	Size, sensor side	G $\frac{1}{2}$
	Standard	DIN 3852-X
	Size, process side	DN 25
	Standard	DIN 11864-1
	Pressure stage	PN 40
	Product code/Art. no.	HYGADAPT-P.XU5

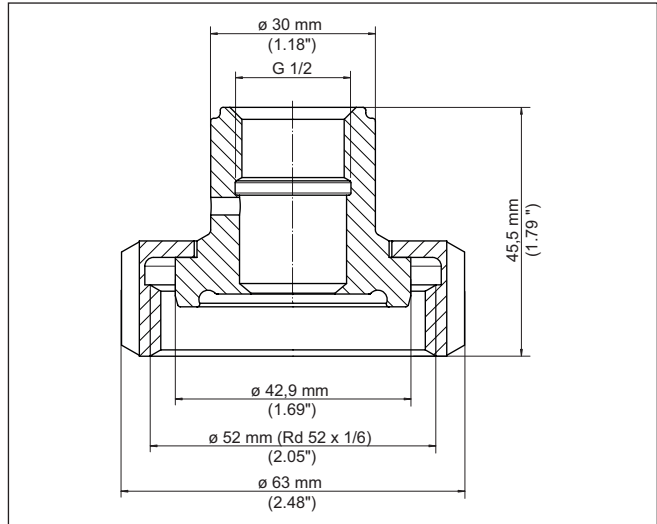


Fig. 68: Dimensions hygienic adapter G $\frac{1}{2}$ (DIN 3852-X) on slotted nut DN 25 (DIN 11851-1) PN 40 - Cone seal

**Thread G $\frac{1}{2}$ - Slotted nut
DN 40 - Cone seal**

Part	Feature	Characteristic
Hygienic adapter	Size, sensor side	G $\frac{1}{2}$
	Standard	DIN 3852-X
	Size, process side	DN 25
	Standard	DIN 11864-1
	Pressure stage	PN 40
	Product code/Art. no.	HYGADAPT-P.XE2

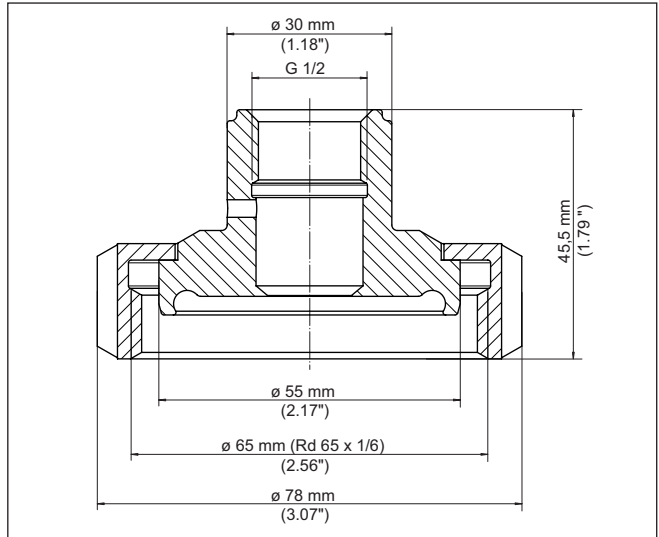


Fig. 69: Dimensions hygienic adapter G $\frac{1}{2}$ (DIN 3852-X) on slotted nut DN 40 (DIN 11864-1) PN 40 - Cone seal

9.6 Further hygienic fittings

**Thread G $\frac{1}{2}$ - Varivent
Form N DN 40 ... DN 100 -
Cone seal**

Part	Feature	Characteristic
Hygienic adapter	Size, sensor side	G1
	Standard	DIN 3852-X
	Size, process side	DN 40
	Standard	Varivent
	Pressure stage	PN 25
	Product code/Art. no.	HYGADAPT-P.XFR

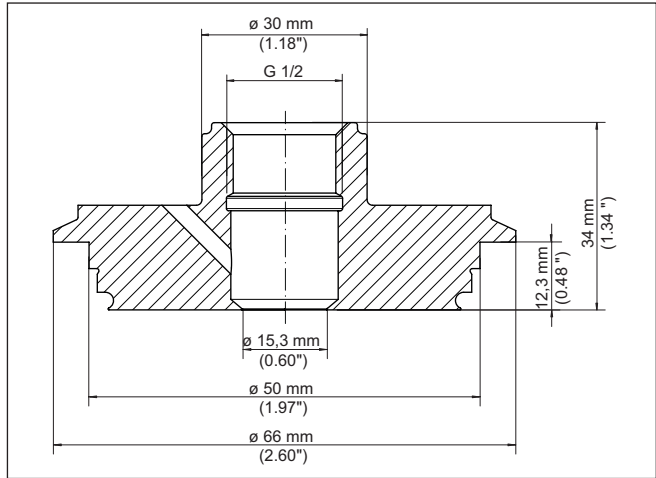


Fig. 70: Dimensions hygienic adapter G $\frac{1}{2}$ (DIN 3852-X) on Varivent Form N DN 40 ... DN 100 - Cone seal

**Thread G $\frac{1}{2}$ - Varivent
Form F DN 25 - Cone seal**

Part	Feature	Characteristic
Hygienic adapter	Size, sensor side	G1
	Standard	DIN 3852-X
	Size, process side	DN 32
	Standard	Varivent
	Pressure stage	PN 25
	Product code/Art. no.	HYGADAPT-P.XFS

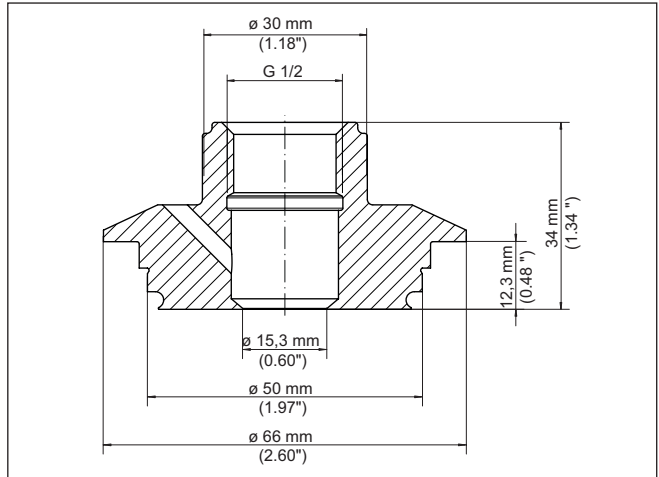


Fig. 71: Dimensions hygienic adapter G $\frac{1}{2}$ (DIN 3852-X) on Varivent Form F DN 25 - Cone seal

Thread G $\frac{1}{2}$ - SMS DN 38 - Cone seal

Part	Feature	Characteristic
Hygienic adapter	Size, sensor side	G1
	Standard	DIN 3852-X
	Size, process side	DN 40
	Standard	SMS
	Pressure stage	PN 6
	Product code/Art. no.	HYGADAPT-P.XFA

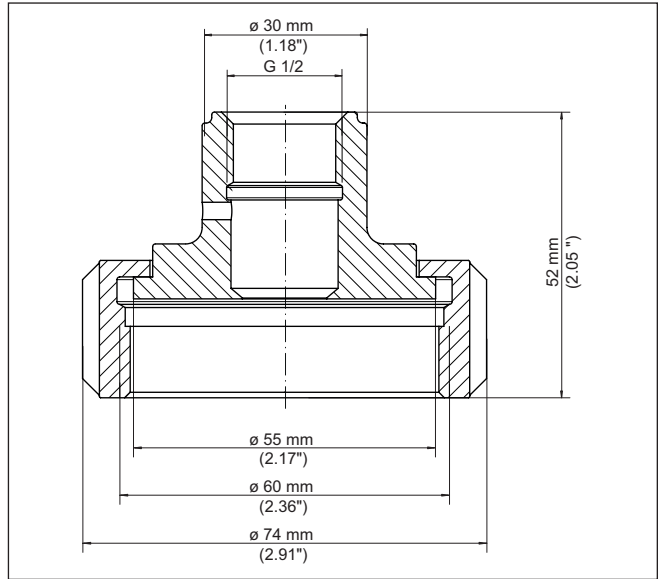


Fig. 72: Dimensions hygienic adapter G $\frac{1}{2}$ (DIN 3852-X) on SMS DN 38 - Cone seal

10 Welding, mounting

10.1 Welding instructions



Information:

The following welding instructions are for information only. It is important that the welding regulations are always observed. The AD leaflets must also be noted when welding on pressure vessels.

Preparations

When welding stainless steel, utmost cleanliness is necessary. Rusty tools or screwed parts, e.g., are not allowed. Also make sure that no mild steel is processed in the vicinity.

Use sufficient inert gas for tack welding. Make sure that you only tack weld, not spot-weld. For tacking and welding, use pure argon protective gas.

Welding dummy

A suitable welding dummy must be used to avoid warping the welded socket.

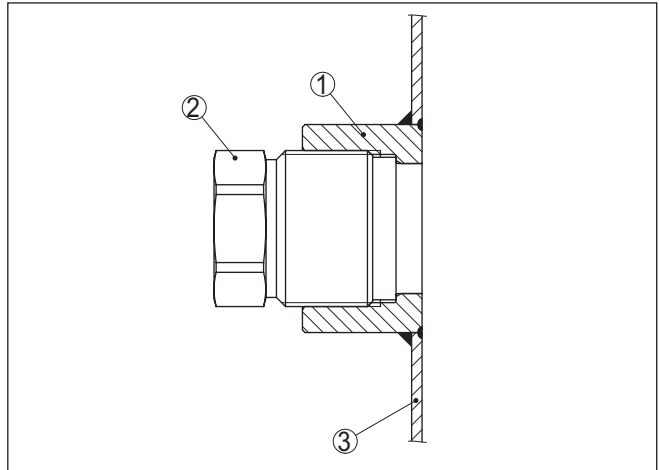


Fig. 73: Welding dummy

- 1 Welded socket
- 2 Dummy
- 3 Pipeline or vessel wall

Welding procedure

It is generally recommended to divide the weld joint into several segments.

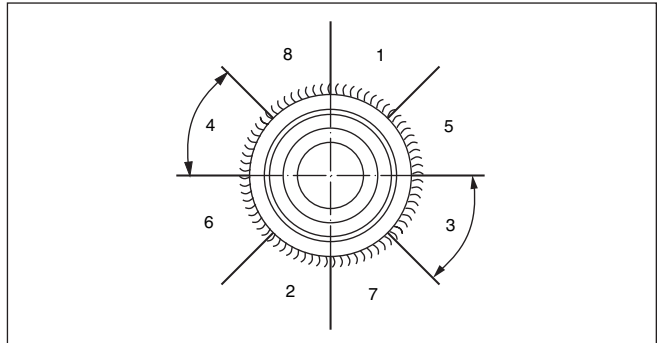


Fig. 74: Segmental welding

After welding a segment, go to the other side and weld the segment that lies exactly opposite. Interrupt the welding process after two segments and wait until the weld joint cools or carefully cool the weld joint yourself before you start welding again.

Pressure bearing capacity

The pressure bearing capacity of the welded socket depends on the quality of the weld as well as the material of the welded socket. In the case of threaded sockets, the total thread length must be utilized for pressure loading.

10.2 Mounting instructions threaded and hygienic adapter

Preparations

Use suitable spanners to screw the sensor into the adapter. The specifications are stated in the appropriate chapters of this manual or in the operating instructions manual of the respective sensor.

Mounting

Place the parts, especially with hygienic adapters, on a suitable, clean surface (e.g. workbench) and screw them together with the respective specified torque.



Note:

Avoid damage to the surface of the process fitting and adapter. Any damage can particularly impair the hygienic properties.



Note:

The cone seals metal/metal or plastic/metal provide a secure sealing when tightened once.

Loosening and retightening reduces the quality of the contact surfaces. Leakage, product leakage and contamination can be the result.



Printing date:

VEGA

All statements concerning scope of delivery, application, practical use and operating conditions of the sensors and processing systems correspond to the information available at the time of printing.

Subject to change without prior notice

© VEGA Grieshaber KG, Schiltach/Germany 2022



65827-EN-220516

VEGA Grieshaber KG
Am Hohenstein 113
77761 Schiltach
Germany

Phone +49 7836 50-0
E-mail: info.de@vega.com
www.vega.com