

SHLM MI

Multiple Insertion Element Inverted



Application Area

The SHLM MI source holder is designed for radiation-based measurement of applications including density, interface, and continuous and point level. The most common industries for the SHLM MI include:

- Chemical
- Petrochemical
- Offshore
- Refining

Advantages

Recognizable benefits include:

- Rugged construction for harsh environments
- Standard ANSI flange for easy drywell mounting
- Convenient lifting lugs facilitate installation
- Designed for mounting on the side or bottom of vessel
- Allows insertion of multiple capsules into drywell
- Multiple insertion elements minimize length and weight of source holder

Function

The SHLM MI source holder is used for critically high pressure applications when the vessel walls are too thick for other sources. The SHLM MI source holder uses a stainless steel cable actuator to place a source inside the vessel by way of a dry well.

Technical Data

Maximum Cs-137 Activity	185 GBq (5000 mCi) for 50 uSv@305 mm (5mR/hr@12")
Multiple Capsules	37 GBq (1000 mCi) per 0.3 m (12") 10 Curie max.
Maximum C0-60 Activity	1.85 GBq (50 mCi) for 50 uSv@305 mm (5mR/hr@12")
Multiple Capsules	1.85 GBq (50 mCi) per 0.3 m (12") 500 mCi max.
Fire Resistance	+538 °C (+1000 °F) for 5 minutes
Ambient Temperature	-40 ... +60 °C (-40 ... +140 °F)
Vessel Temperature (Maximum Operating)	+260 °C (+500 °F) Consult factory, if exceeded.
Weight	Consult factory

Materials

The shielding material is lead. The standard cable is stainless steel.

Housing Versions

The housing is available in carbon steel with polyester powder coating. Stainless steel housings are also available.

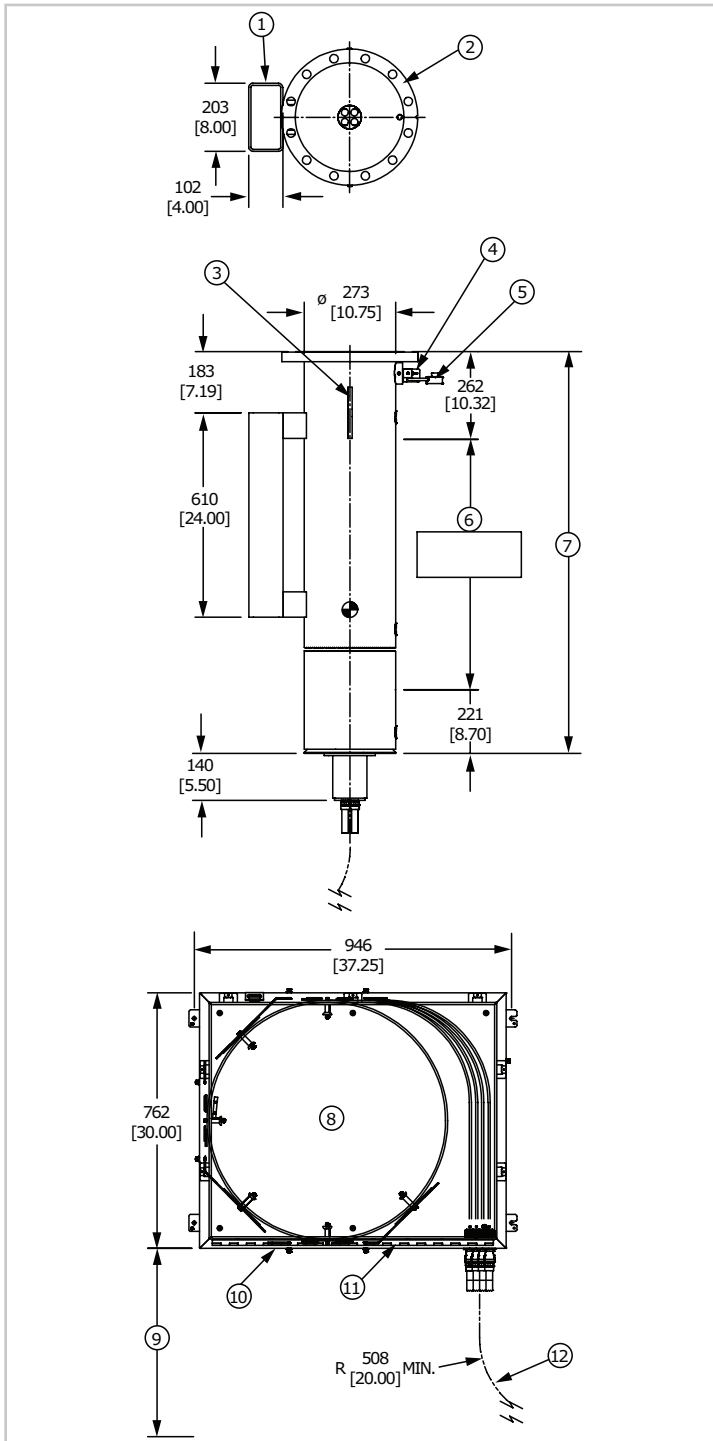
Approvals

The source holder is regulated by the U.S. Nuclear Regulatory Commission (NRC). Compliance certificates are issued by the State of Ohio under an agreement with the NRC.

Operation

Technicians must be licensed by a nuclear regulatory authority in order to complete the insertion of the source cable for the source holder. Before inserting the cable, the technician must remove the locking mechanism.

Dimensions



SHLM MI

- 1 Fork Lift Bracket
- 2 10" ANSI 150# Flange
- 3 2x $\phi 32$ [$\phi 1.25$] Lifting Eye
- 4 Shutter
- 5 Combination Lock
- 6 Active Length
- 7 Shielding Length - Depends on Active Length and Shielding (Consult Factory)
- 8 Actuator Cabinet Depth - 305 [12.00]
- 9 Service Clearance - 94 [36.00]
- 10 Actuator Cabinet Door (Not Shown for Clarity)
- 11 Actuator Door Hinge - 762 [30.00] Clearance Req'd for Actuator Door Swing
- 12 3/8" Liquid-Tight Flex Conduit (Not to Exceed 25 Ft)

Information

You can find additional information about VEGA product offerings from our home page, www.vega-americas.com. Brochures, operating instructions, quick reference guides, specification sheets, and drawings are also available from the Downloads section of our homepage.

Device Selection

The Downloads section of our home page, www.vega-americas.com provides application data sheets so you can provide the data necessary to specify the proper equipment for your application.

Contact

Please call 1-513-272-0131, Monday through Friday, 8:00 A.M.-5:00 P.M., EST (Eastern Standard Time) if you have any questions. For emergencies after hours, call the number above and follow the voice mail instructions.

All information is subject to change without notice.