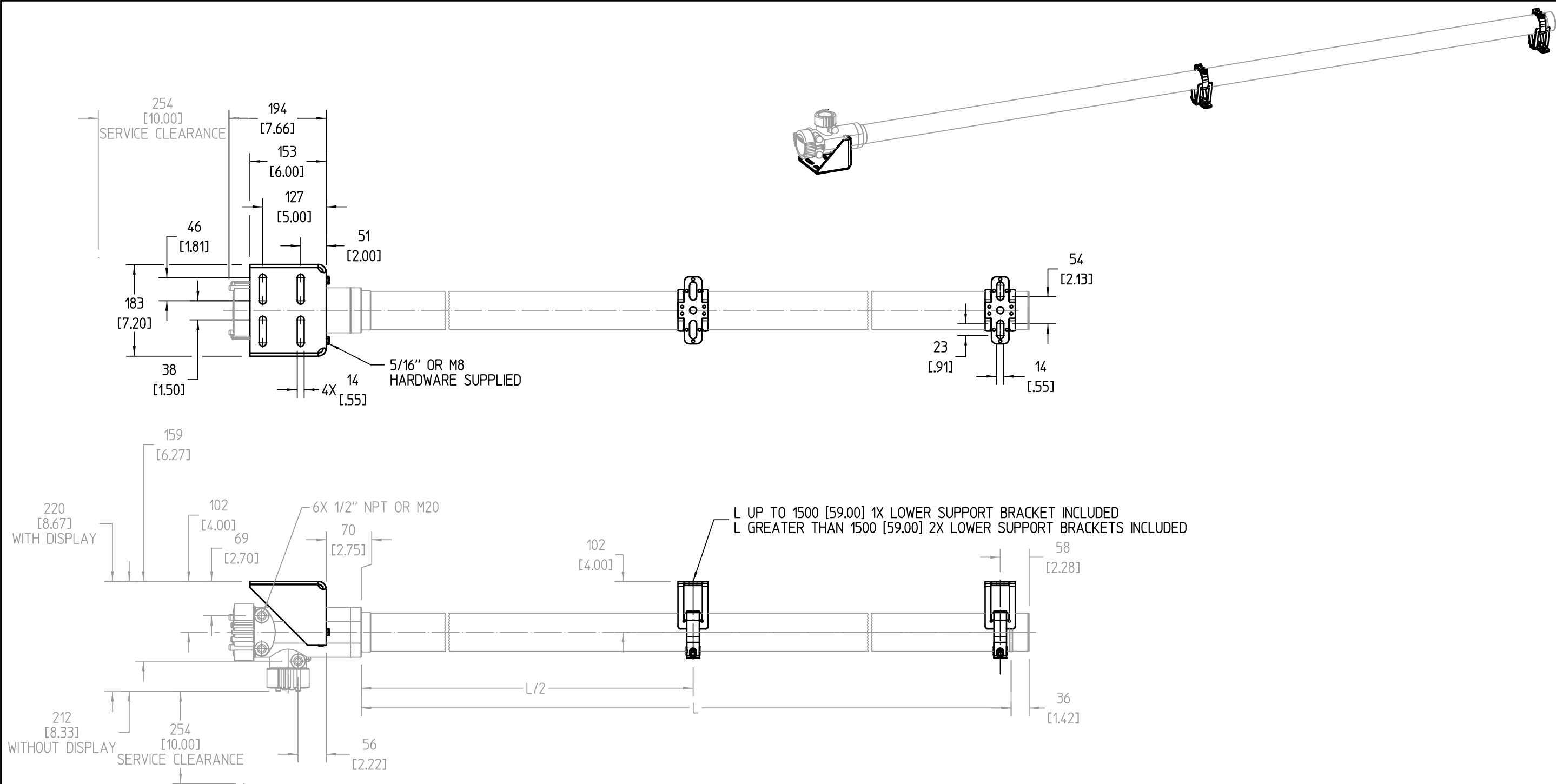


THIS DOCUMENT INCLUDES INFORMATION WHICH IS PROPRIETARY TO VEGA AMERICAS INC. NEITHER THIS DOCUMENT NOR THE INFORMATION DISCLOSED HEREIN SHALL BE USED OR DISCLOSED TO OTHERS FOR MANUFACTURING OR ANY OTHER PURPOSE EXCEPT AS SPECIFICALLY AUTHORIZED IN WRITING BY VEGA AMERICAS INC. THIS DOES NOT APPLY TO INFORMATION FURNISHED BY VENDORS OR OTHERS OUTSIDE VEGA AMERICAS INC.



NOTES:

1. DETECTOR SHOULD BE MOUNTED AS FOLLOWS:
 - A. THE DETECTOR SCINTILLATOR SHOULD BE SET AT THE DETECTOR GAP RECOMMENDED ON THE SIZE SHEET. IF A SIZE SHEET IS NOT AVAILABLE, VEGA RECOMMENDS 50mm [2"] FOR VESSELS WITH MAXIMUM SURFACE TEMPERATURE LESS THAN 60°C AND AT LEAST 150mm [6"] FOR VESSELS WITH MAXIMUM SURFACE TEMPERATURE GREATER THAN 60°C. THIS SPACING IS FROM THE VESSEL'S EXTREME OUTER SURFACE (INSULATION, SHEATHING, ETC.) TO THE SCINTILLATOR SURFACE.
 - B. DO NOT REMOVE ANY INSULATION FROM THE VESSEL DURING INSTALLATION.
 - C. DO NOT PLACE ANY MATERIAL BETWEEN THE VESSEL'S EXTREME OUTER SURFACE AND THE SCINTILLATOR UNLESS DIRECTED BY VEGA.
 - D. MAKE SURE PROCESS MATERIAL OR OTHER FOREIGN MATTER CANNOT ACCUMULATE BETWEEN VESSEL AND SCINTILLATOR.
2. EXPOSED MATERIAL IS 316 STAINLESS STEEL.
3. APPROXIMATE WEIGHT OF BRACKET IS 2.8 kg [6.2 lb].
APPROXIMATE WEIGHT OF LOWER SUPPORT IS 1 kg [2.2 lb] EACH.

		05	UPDATED NOTE 3		32427	14.08.2019	schmidts	schmidts
		04	UPDATED BRACKET TO WIDER SLOTS		28257	25.01.2018	shreveb	shreveb
		03	REMOVED "(++edited++)"		27730	08.03.2017	shreveb	shreveb
		02	UPDATED LOWER SUPPORT BRACKET		26463	19.07.2016	grieshopc	shreveb
Passmaß/tol.dimens.	Abmaß/allowance	Änderung / revision				Änd. Nr. / EON no.	Datum / Date	gezeichnet / freigegeben drawn / checked
	Freimaßtoleranz general tolerance	gezeichnet drawn	Datum/Date	Name/Name	Benennung		Description	
		freigegeben checked	01.02.2012	shreveb	SOLITRAC31 Montagezeichnung PTB3		SOLITRAC 31 PTB3 BRACKET MOUNTING	
Werkstoff / Material	Maßstab Scale	Originalformat size of origin		VEGA		Art.Nr. / Art.No.		Änd.-Zust. / Rev.
	B	B		VEGA Americas Inc. 4241 Allendorf Drive Cincinnati, Ohio 45209 USA		MB5019-US		05
	Blatt / Sheet of	1 of 1		Var.Fam.: ST31-XXXXXXXXXX		Var.Fam.2: SOLITRAC31		
				Teil ähnl. / sim. part		Ersatz f./replacement f.		
				Arb.Anw. / work.instr.		DIMENSIONS/BEMASSUNGEN: mm [INCHES]		

Diese Zeichnung bleibt Eigentum der Firma VEGA Americas Inc. Sie darf ohne unsere Genehmigung weder kopiert, noch 3. Personen oder Konkurrenzfirmen mitgeteilt werden. (S 2 Abs.1 Ziff.7 UrHG vom 09.09.1965)